

# Collagen IV Rabbit pAb

Collagen IV Rabbit pAb

Catalog # AP94834

## Product Information

<b>Application</b>	WB, IHC-P, IHC-F, IF, E
<b>Primary Accession</b>	<a href="#">P02463</a>
<b>Reactivity</b>	Rat, Human, Rabbit
<b>Host</b>	Rabbit
<b>Clonality</b>	Polyclonal
<b>Calculated MW</b>	160679

## Additional Information

<b>Gene ID</b>	12826
<b>Other Names</b>	Collagen alpha-1(IV) chain, Arresten, Col4a1 {ECO:0000312   MGI:MGI:88454}
<b>Dilution</b>	WB=1:500-2000,IHC-P=1:100-500,IHC-F=1:100-500,IF=1:100-500,Flow-Cyt=1 µg/Test,ELISA=1:5000-10000
<b>Format</b>	0.01M TBS(pH7.4) with 1% BSA, 0.09% (W/V) sodium azide and 50% Glycerol
<b>Storage</b>	Store at -20 °C for one year. Avoid repeated freeze/thaw cycles. When reconstituted in sterile pH 7.4 0.01M PBS or diluent of antibody the antibody is stable for at least two weeks at 2-4 °C.

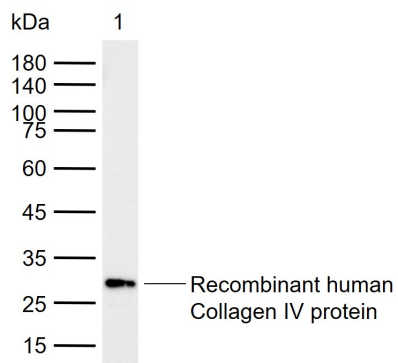
## Protein Information

<b>Name</b>	Col4a1 {ECO:0000312   MGI:MGI:88454}
<b>Function</b>	Type IV collagen is the major structural component of glomerular basement membranes (GBM), forming a 'chicken-wire' meshwork together with laminins, proteoglycans and entactin/nidogen.
<b>Cellular Location</b>	Secreted, extracellular space, extracellular matrix, basement membrane
<b>Tissue Location</b>	Detected in the basement membrane of the cornea (at protein level).

## Background

This product as supplied is intended for research use only, not for use in human, therapeutic or diagnostic applications.

## Images



Sample: Lane 1: Recombinant human Collagen IV protein, N-His(AP94834) Primary: Anti-Collagen IV (AP94834) at 1/1000 dilution Secondary: IRDye800CW Goat Anti-Rabbit IgG at 1/20000 dilution Predicted band size: 165 kDa Observed band size: 28 kDa

Please note: All products are 'FOR RESEARCH USE ONLY. NOT FOR USE IN DIAGNOSTIC OR THERAPEUTIC PROCEDURES'.