

GFP Recombinant Rabbit mAb

GFP Recombinant Rabbit mAb

Catalog # AP94826

Product Information

Application	WB
Host	Rabbit
Clonality	Recombinant
Physical State	Liquid
Immunogen	Recombinant Green Fluorescence Protein
Purity	affinity purified by Protein A
Buffer	0.01M TBS(pH7.4) with 1% BSA, 0.02% Proclin300 and 50% Glycerol.
SIMILARITY	Belongs to the GFP family.
SUBUNIT	Monomer.
Post-translational modifications	Contains a chromophore consisting of modified amino acid residues. The chromophore is formed by autocatalytic backbone condensation between Ser-65 and Gly-67, and oxidation of Tyr-66 to didehydrotyrosine. Maturation of the chromophore requires nothing other than molecular oxygen.
Important Note	This product as supplied is intended for research use only, not for use in human, therapeutic or diagnostic applications.
Background Descriptions	Enhanced Blue Fluorescent Protein (EBFP) emits a strong blue fluorescence. EBFP can be used as protein "tags" to study the sub-cellular localization of proteins and/or their translocation upon stimulation or as markers for transfection in transient and stable expression systems.

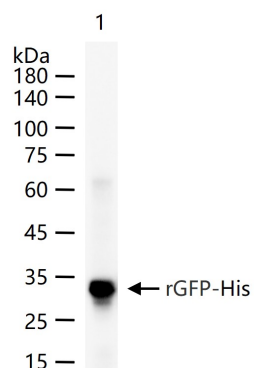
Additional Information

Target/Specificity	Photocytes.
Dilution	WB=1:1000-10000
Format	0.01M TBS(pH7.4) with 1% BSA, 0.09% (W/V) sodium azide and 50% Glyce
Storage	Store at -20 °C for one year. Avoid repeated freeze/thaw cycles. When reconstituted in sterile pH 7.4 0.01M PBS or diluent of antibody the antibody is stable for at least two weeks at 2-4 °C.

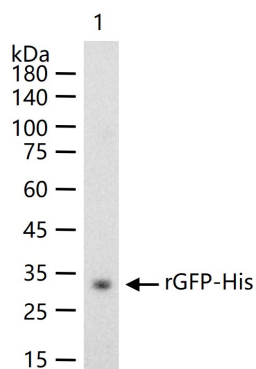
Background

This product as supplied is intended for research use only, not for use in human, therapeutic or diagnostic applications.

Images



20 ng rGFP-His protein (bs-33009P) per lane probed with GFP monoclonal antibody respectively, unconjugated (AP94826) at 1:1000 dilution and 4°C overnight incubation. Followed by corresponding conjugated secondary antibody incubation at r.t. for 60 min.



50 ng rGFP-His protein (bs-33009P) per lane probed with GFP monoclonal antibody respectively, unconjugated (AP94826) at 1:10000 dilution and 4°C overnight incubation. Followed by corresponding conjugated secondary antibody incubation at r.t. for 60 min.

Please note: All products are 'FOR RESEARCH USE ONLY. NOT FOR USE IN DIAGNOSTIC OR THERAPEUTIC PROCEDURES'.