

His tag Recombinant Rabbit mAb

His tag Recombinant Rabbit mAb

Catalog # AP94812

Product Information

Application	WB
Host	Rabbit
Clonality	Recombinant
Physical State	Liquid
Immunogen	KLH conjugated HHHHHH peptide
Isotype	IgG
Purity	affinity purified by Protein G
Buffer	PBS (pH=7.4)
Important Note	This product as supplied is intended for research use only, not for use in human, therapeutic or diagnostic applications.
Background Descriptions	The H-H-H-H-H-H motif is used as a tag on many recombinant proteins to facilitate purification. The antibody recognizes the His-tag fused to the amino- or carboxy- termini of targeted proteins in transfected or transformed cells.

Additional Information

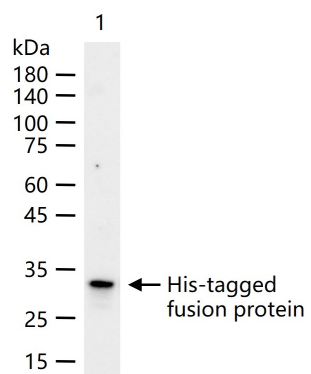
Dilution	WB=1:500-2000
Format	0.01M TBS(pH7.4) with 1% BSA, 0.09% (W/V) sodium azide and 50% Glyce
Storage	Store at -20 °C for one year. Avoid repeated freeze/thaw cycles. When reconstituted in sterile pH 7.4 0.01M PBS or diluent of antibody the antibody is stable for at least two weeks at 2-4 °C.

Background

This product as supplied is intended for research use only, not for use in human, therapeutic or diagnostic applications.

Images

20 ng rGFP-His protein (bs-33009P) per lane probed with His tag monoclonal antibody respectively, unconjugated (AP94812) at 1:1000 dilution and 4°C overnight incubation. Followed by corresponding conjugated secondary antibody incubation at r.t. for 60 min.



Please note: All products are 'FOR RESEARCH USE ONLY. NOT FOR USE IN DIAGNOSTIC OR THERAPEUTIC PROCEDURES'.