

# NAPSIN A Mouse mAb

NAPSIN A Mouse mAb

Catalog # AP94794

## Product Information

---

<b>Application</b>	IHC-P, IHC-F, IF
<b>Reactivity</b>	Mouse
<b>Host</b>	Rabbit
<b>Clonality</b>	Monoclonal
<b>Calculated MW</b>	39 KDa
<b>Physical State</b>	Liquid
<b>Immunogen</b>	KLH conjugated synthetic peptide derived from mouse NAPSIN A
<b>Isotype</b>	IgG1, Kappa
<b>Purity</b>	affinity purified by Protein A
<b>Buffer</b>	Liquid in PBS containing 50% Glycerol, 0.5% BSA and 0.02% Proclin300.
<b>SUBCELLULAR LOCATION</b>	Secreted (Potential).
<b>SIMILARITY</b>	Belongs to the peptidase A1 family.
<b>Important Note</b>	This product as supplied is intended for research use only, not for use in human, therapeutic or diagnostic applications.
<b>Background Descriptions</b>	Napsin A is an aspartic proteinase that belongs to the peptidase A1 family and plays a role in pneumocyte surfactant processing. It is a 420-amino acid polypeptide consisting of a 24-residue signal peptide, a 40-amino acid propart, the mature enzyme of 336 amino acids, and a C-terminal extension of 18 residues. The mature Napsin A protein contains 3 predicted disulfide bonds, 3 potential N-linked oligosaccharide attachment sites, an RGD motif, a recognition motif for integrin binding, in the C terminus, immediately before a 4-amino acid insert that is unique to aspartic proteinases. Highest levels of Napsin A have been detected in adult lung (type II pneumocytes), fetal lung, and kidney tissues. Napsin A is also expressed at lower levels in adult spleen and at very low levels in peripheral blood leukocytes. Human napsin A shares 72.6% sequence identity with the mouse homolog.

## Additional Information

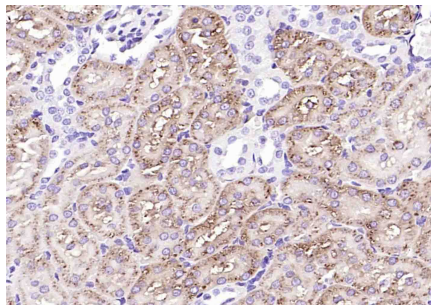
---

<b>Target/Specificity</b>	Expressed predominantly in adult lung (type II pneumocytes) and kidney and in fetal lung. Low levels in adult spleen and very low levels in peripheral blood leukocytes.
<b>Dilution</b>	IHC-P=1:100-500,IF=1:50-200,IHC-F=1:100-500
<b>Format</b>	0.01M TBS(pH7.4) with 1% BSA, 0.09% (W/V) sodium azide and 50% Glyce
<b>Storage</b>	Store at -20 °C for one year. Avoid repeated freeze/thaw cycles. When reconstituted in sterile pH 7.4 0.01M PBS or diluent of antibody the antibody is stable for at least two weeks at 2-4 °C.

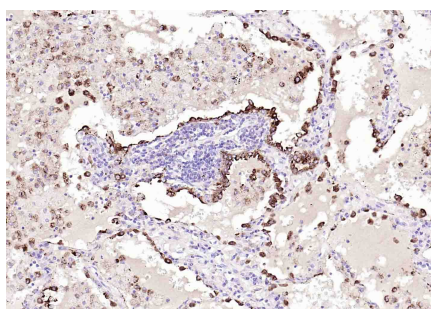
## Background

This product as supplied is intended for research use only, not for use in human, therapeutic or diagnostic applications.

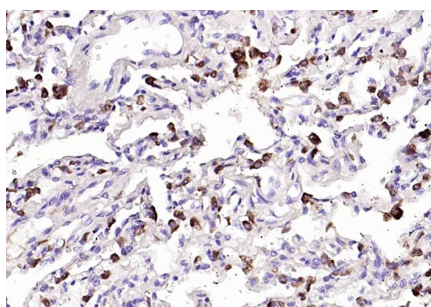
## Images



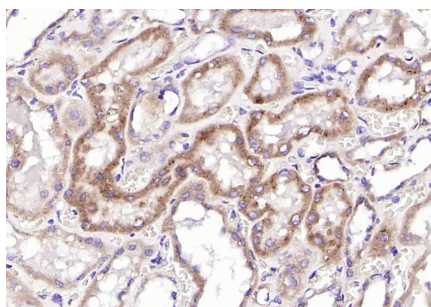
Paraformaldehyde-fixed, paraffin embedded (rat kidney); Antigen retrieval by boiling in sodium citrate buffer (pH6.0) for 15min; Block endogenous peroxidase by 3% hydrogen peroxide for 20 minutes; Blocking buffer (normal goat serum) at 37°C for 30min; Incubation with (NAPSIN A ) Monoclonal Antibody, Unconjugated (AP94794) at 1:100 overnight at 4°C, followed by operating according to SP Kit(Mouse)(sp-0024) instructions and DAB staining.



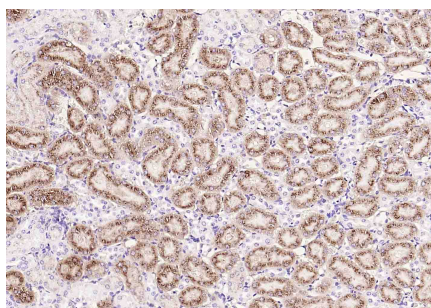
Paraformaldehyde-fixed, paraffin embedded (human lung carcinoma); Antigen retrieval by boiling in sodium citrate buffer (pH6.0) for 15min; Block endogenous peroxidase by 3% hydrogen peroxide for 20 minutes; Blocking buffer (normal goat serum) at 37°C for 30min; Incubation with (NAPSIN A ) Monoclonal Antibody, Unconjugated (AP94794) at 1:100 overnight at 4°C, followed by operating according to SP Kit(Mouse)(sp-0024) instructions and DAB staining.



Paraformaldehyde-fixed, paraffin embedded (human lung ); Antigen retrieval by boiling in sodium citrate buffer (pH6.0) for 15min; Block endogenous peroxidase by 3% hydrogen peroxide for 20 minutes; Blocking buffer (normal goat serum) at 37°C for 30min; Incubation with (NAPSIN A ) Monoclonal Antibody, Unconjugated (AP94794) at 1:100 overnight at 4°C, followed by operating according to SP Kit(Mouse)(sp-0024) instructions and DAB staining.



Paraformaldehyde-fixed, paraffin embedded (human kidney); Antigen retrieval by boiling in sodium citrate buffer (pH6.0) for 15min; Block endogenous peroxidase by 3% hydrogen peroxide for 20 minutes; Blocking buffer (normal goat serum) at 37°C for 30min; Incubation with (NAPSIN A ) Monoclonal Antibody, Unconjugated (AP94794) at 1:100 overnight at 4°C, followed by operating according to SP Kit(Mouse)(sp-0024) instructions and DAB staining.



Paraformaldehyde-fixed, paraffin embedded (mouse kidney); Antigen retrieval by boiling in sodium citrate buffer (pH6.0) for 15min; Block endogenous peroxidase by 3% hydrogen peroxide for 20 minutes; Blocking buffer (normal goat serum) at 37°C for 30min; Incubation with (NAPSIN A ) Monoclonal Antibody, Unconjugated (AP94794) at 1:100 overnight at 4°C, followed by operating according to SP Kit(Mouse)(sp-0024) instructions and DAB staining.

Please note: All products are 'FOR RESEARCH USE ONLY. NOT FOR USE IN DIAGNOSTIC OR THERAPEUTIC PROCEDURES'.