

SUN2 Recombinant Rabbit mAb

SUN2 Recombinant Rabbit mAb

Catalog # AP94778

Product Information

Application	WB, IHC-P, IHC-F, IF, ICC
Reactivity	Human
Host	Rabbit
Clonality	Recombinant
Calculated MW	80 KDa
Physical State	Liquid
Immunogen	Recombinant protein within human SUN2 aa 500-700.
Isotype	IgG
Purity	affinity purified by Protein A
Buffer	0.01M TBS (pH7.4) with 1% BSA, 0.02% Proclin300 and 50% Glycerol.
Post-translational modifications	The disulfid bond with SYNE2 is required for stability of the SUN2:SYNE2/KASH2 LINC complex under tensile forces though not required for the interaction. The disulfid bond is proposed to be conserved in LINC complexes involved in force transmission.
Important Note	This product as supplied is intended for research use only, not for use in human, therapeutic or diagnostic applications.
Background Descriptions	SUN1 (MIM 607723) and SUN2 are inner nuclear membrane (INM) proteins that play a major role in nuclear-cytoplasmic connection by formation of a 'bridge' across the nuclear envelope, known as the LINC complex, via interaction with the conserved luminal KASH domain of nesprins (e.g., SYNE1; MIM 608441) located in the outer nuclear membrane (ONM). The LINC complex provides a direct connection between the nuclear lamina and the cytoskeleton, which contributes to nuclear positioning and cellular rigidity (summary by Haque et al., 2010 [PubMed 19933576]).[supplied by OMIM, Nov 2010]

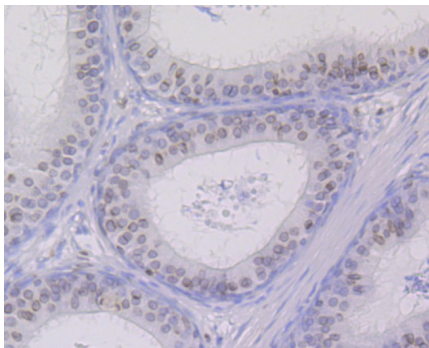
Additional Information

Target/Specificity	Widely expressed. Highly expressed in heart, lung and muscle. Weakly expressed in fetal heart. Slightly overexpressed in some heart tissues form patients with congenital heart defects.
Dilution	WB=1:500-2000,IHC-P=1:100-500,IHC-F=1:400-800,ICC/IF=1:50-100,IF=1:100-500
Format	0.01M TBS(pH7.4) with 1% BSA, 0.09% (W/V) sodium azide and 50% Glyce
Storage	Store at -20 °C for one year. Avoid repeated freeze/thaw cycles. When reconstituted in sterile pH 7.4 0.01M PBS or diluent of antibody the antibody is stable for at least two weeks at 2-4 °C.

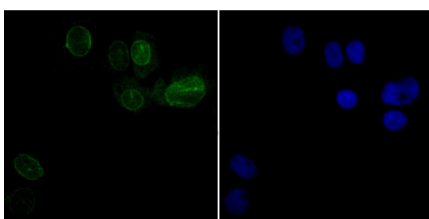
Background

This product as supplied is intended for research use only, not for use in human, therapeutic or diagnostic applications.

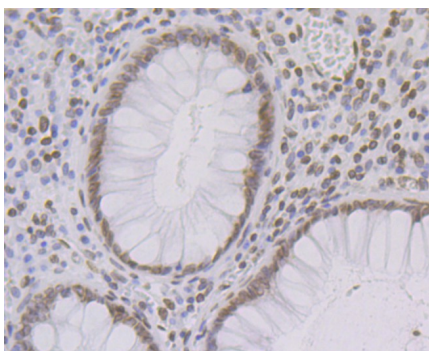
Images



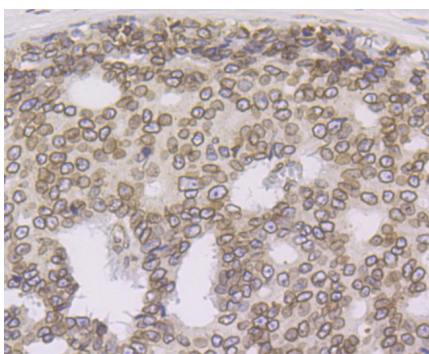
Immunohistochemical analysis of paraffin-embedded rat epididymis tissue using anti-SUN2 antibody. Counter stained with hematoxylin.



ICC staining SUN2 (green) in SK-Br-3 cells. The nuclear counter stain is DAPI (blue). Cells were fixed in paraformaldehyde, permeabilised with 0.25% Triton X100/PBS.

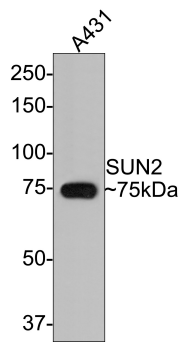


Immunohistochemical analysis of paraffin-embedded human colon tissue using anti-SUN2 antibody. Counter stained with hematoxylin.

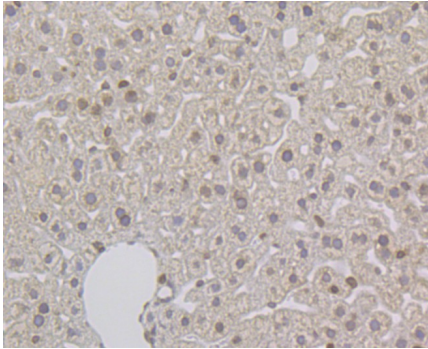


Immunohistochemical analysis of paraffin-embedded human prostate cancer tissue using anti-SUN2 antibody. Counter stained with hematoxylin.

Western blot analysis of SUN2 on A431 cell lysates with Rabbit anti-SUN2 antibody (AP94778) at 1/500 dilution. Lysates/proteins at 10 µg/Lane. Predicted band size: 80 kDa Observed band size: 75 kDa Exposure time: 2 minutes; 8% SDS-PAGE gel. Proteins were transferred to a



PVDF membrane and blocked with 5% NFDm/TBST for 1 hour at room temperature. The primary antibody (AP94778) at 1/500 dilution was used in 5% NFDm/TBST at room temperature for 2 hours. Goat Anti-Rabbit IgG - HRP Secondary Antibody at 1:300,000 dilution was used for 1 hour at room temperature.



Immunohistochemical analysis of paraffin-embedded mouse liver tissue using anti-SUN2 antibody. Counter stained with hematoxylin.

Please note: All products are 'FOR RESEARCH USE ONLY. NOT FOR USE IN DIAGNOSTIC OR THERAPEUTIC PROCEDURES'.