

C9orf37 Rabbit pAb

C9orf37 Rabbit pAb

Catalog # AP94770

Product Information

Application	WB
Primary Accession	Q9H2J1
Reactivity	Human
Host	Rabbit
Clonality	Polyclonal
Calculated MW	18048
Physical State	Liquid
Immunogen	KLH conjugated synthetic peptide derived from human C9orf37
Epitope Specificity	101-176/176
Isotype	IgG
Purity	affinity purified by Protein A

Buffer 0.01M TBS (pH7.4) with 1% BSA, 0.02% Proclin300 and 50% Glycerol.

Important Note This product as supplied is intended for research use only, not for use in human, therapeutic or diagnostic applications.

Background Descriptions C9orf37 is a 176 amino acid protein encoded by a gene that maps to human chromosome 9q34.3. Chromosome 9 consists of about 145 million bases, represents 4% of the human genome and encodes nearly 900 genes. Thought to play a role in gender determination, deletion of the distal portion of 9p can lead to development of male to female sex reversal, the phenotype of a female with a male X,Y genotype. Hereditary hemorrhagic telangiectasia, which is characterized by harmful vascular defects, is associated with the chromosome 9 gene encoding endoglin protein, ENG. Familial dysautonomia is also associated with chromosome 9 though through the gene IKBKAP. Notably, chromosome 9 encompasses the largest interferon family gene cluster. Chromosome 9 is partnered with chromosome 22 in the translocation leading to the aberrant production of BCR-ABL fusion protein often found in leukemias.

Additional Information

Other Names Uncharacterized protein ARRDC1-AS1, ARRDC1 antisense RNA 1, ARRDC1 antisense gene protein 1, ARRDC1-AS1, C9orf37

Dilution WB=1:500-2000

Format 0.01M TBS(pH7.4) with 1% BSA, 0.09% (W/V) sodium azide and 50% Glyce

Storage Store at -20 °C for one year. Avoid repeated freeze/thaw cycles. When reconstituted in sterile pH 7.4 0.01M PBS or diluent of antibody the antibody is stable for at least two weeks at 2-4 °C.

Protein Information

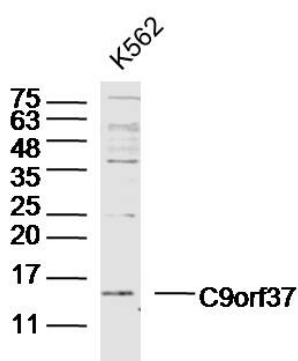
Name ARRDC1-AS1

Synonyms C9orf37

Background

This product as supplied is intended for research use only, not for use in human, therapeutic or diagnostic applications.

Images



Sample:K562 (Human)Cell Lysate at 40 ug Primary:
Anti-C9orf37(AP94770)at 1/300 dilution Secondary:
IRDye800CW Goat Anti-RabbitIgG at 1/20000 dilution
Predicted band size: 18kD Observed band size: 15kD

Please note: All products are 'FOR RESEARCH USE ONLY. NOT FOR USE IN DIAGNOSTIC OR THERAPEUTIC PROCEDURES'.