

# Prostate Specific Antigen Mouse mAb

Prostate Specific Antigen Mouse mAb

Catalog # AP94768

## Product Information

---

<b>Application</b>	WB, IHC-P, IHC-F, IF, E
<b>Host</b>	Rabbit
<b>Clonality</b>	Monoclonal
<b>Calculated MW</b>	23 KDa
<b>Physical State</b>	Liquid
<b>Immunogen</b>	Prostate Specific Antigen (PSA) Antigen, Native
<b>Isotype</b>	IgG1
<b>Purity</b>	affinity purified by Protein A
<b>Buffer</b>	0.01M PBS (pH7.4).
<b>SUBCELLULAR LOCATION</b>	Secreted.
<b>SIMILARITY</b>	Belongs to the peptidase S1 family. Kallikrein subfamily. Contains 1 peptidase S1 domain.
<b>SUBUNIT</b>	Forms heterodimer with SERPINA5.
<b>Post-translational modifications</b>	Belongs to the peptidase S1 family. Kallikrein subfamily. Contains 1 peptidase S1 domain.
<b>Important Note</b>	This product as supplied is intended for research use only, not for use in human, therapeutic or diagnostic applications.
<b>Background Descriptions</b>	Kallikreins are a subgroup of serine proteases having diverse physiological functions. Growing evidence suggests that many kallikreins are implicated in carcinogenesis and some have potential as novel cancer and other disease biomarkers. This gene is one of the fifteen kallikrein subfamily members located in a cluster on chromosome 19. Its protein product is a protease present in seminal plasma. It is thought to function normally in the liquefaction of seminal coagulum, presumably by hydrolysis of the high molecular mass seminal vesicle protein. Serum level of this protein, called PSA in the clinical setting, is useful in the diagnosis and monitoring of prostatic carcinoma. Alternate splicing of this gene generates several transcript variants encoding different isoforms. [provided by RefSeq, Jul 2008].

## Additional Information

---

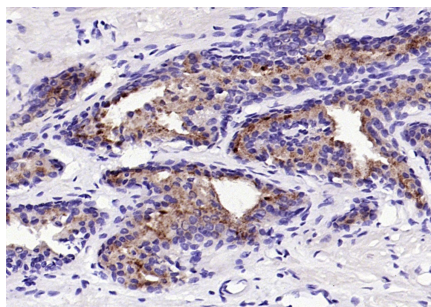
<b>Target/Specificity</b>	Prostate.
<b>Dilution</b>	WB=1:500-2000,IHC-P=1:400-800,IHC-F=1:400-800,IF=1:100-500,ELISA=1:5000-10000
<b>Format</b>	0.01M TBS(pH7.4) with 1% BSA, 0.09% (W/V) sodium azide and 50% Glycerol
<b>Storage</b>	Store at -20 °C for one year. Avoid repeated freeze/thaw cycles. When reconstituted in sterile pH 7.4 0.01M PBS or diluent of antibody the antibody

is stable for at least two weeks at 2-4 °C.

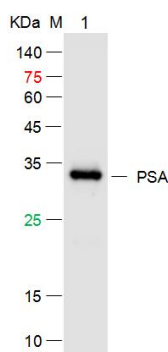
## Background

This product as supplied is intended for research use only, not for use in human, therapeutic or diagnostic applications.

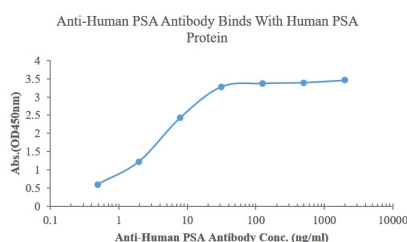
## Images



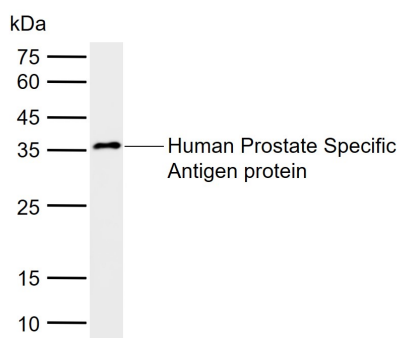
Paraformaldehyde-fixed, paraffin embedded (human prostate); Antigen retrieval by boiling in sodium citrate buffer (pH6.0) for 15min; Block endogenous peroxidase by 3% hydrogen peroxide for 20 minutes; Blocking buffer (normal goat serum) at 37°C for 30min; Antibody incubation with (Prostate Specific Antigen) Monoclonal Antibody, Unconjugated (AP94768) at 1:200 overnight at 4°C, followed by operating according to SP Kit(Mouse)(sp-0024) instructions and DAB staining.



Sample: Lane 1: Prostate Specific Antigen (PSA) Protein at 500ng Primary: Mouse Anti-PSA Monoclonal Antibody at 1/1000 dilution (Cat. AP94768) Secondary: IRDye800CW Goat Anti-Mouse IgG at 1/20000 dilution Predicted band size: 34kD Observed band size: 32kD

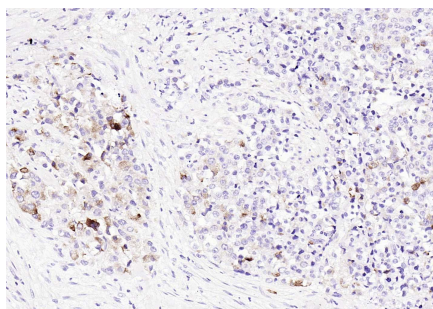


Measured by its binding ability in a indirect ELISA. Immobilized Human PSA (Native) at 2 µg/mL (100 µL/well) can bind Anti-Human PSA monoclonal antibody, the minimum detection concentration is 0.1ng/mL



Sample: Lane 1: Human Prostate Specific Antigen protein Primary: Anti-Prostate Specific Antigen (AP94768) at 1/1000 dilution Secondary: IRDye800CW Goat Anti-Mouse IgG at 1/20000 dilution Predicted band size: 23 kDa Observed band size: 35 kDa

Paraformaldehyde-fixed, paraffin embedded (Human Prostate Tumor); Antigen retrieval by boiling in sodium citrate buffer (pH6.0) for 15min; Block endogenous peroxidase by 3% hydrogen peroxide for 20 minutes; Blocking buffer (normal goat serum) at 37°C for 30min;



Incubation with (Prostate Specific Antigen) Monoclonal Antibody, Unconjugated (AP94768) at 1:100 overnight at 4°C, followed by operating according to SP Kit(Mouse)(sp-0024) instructions and DAB staining.

Please note: All products are 'FOR RESEARCH USE ONLY. NOT FOR USE IN DIAGNOSTIC OR THERAPEUTIC PROCEDURES'.