

PNMA3 Rabbit pAb

PNMA3 Rabbit pAb

Catalog # AP94767

Product Information

Application	WB
Primary Accession	Q8JZW8
Reactivity	Mouse
Host	Rabbit
Clonality	Polyclonal
Calculated MW	54041
Physical State	Liquid
Immunogen	KLH conjugated synthetic peptide derived from mouse PNMA3
Epitope Specificity	351-450/463
Isotype	IgG
Purity	affinity purified by Protein A
Buffer	0.01M TBS (pH7.4) with 1% BSA, 0.02% Proclin300 and 50% Glycerol.
SUBCELLULAR LOCATION	Nucleus > nucleolus.
SIMILARITY	Belongs to the PNMA family. Contains 1 CCHC-type zinc finger.
Important Note	This product as supplied is intended for research use only, not for use in human, therapeutic or diagnostic applications.
Background Descriptions	The protein encoded by this gene belongs to the paraneoplastic antigen MA (PNMA) family, which shares homology with retroviral Gag proteins. The PNMA antigens are highly expressed in the brain and also in a range of tumors associated with serious neurological phenotypes. PMID:16407312 reports the presence of a functional -1 ribosomal frameshift signal (consisting of a heptanucleotide shift motif followed 3' by a pseudoknot structure) in this gene, however, the frame-shifted product has not been characterized. Alternatively spliced transcript variants encoding different isoforms have been found for this gene. [provided by RefSeq, Sep 2013]

Additional Information

Gene ID	245468
Other Names	Paraneoplastic antigen Ma3 homolog, Pnma3
Target/Specificity	Expressed at high levels in the brain and testis. Expressed at lower levels in the heart, trachea and kidney.
Dilution	WB=1:500-2000
Format	0.01M TBS(pH7.4) with 1% BSA, 0.09% (W/V) sodium azide and 50% Glyce
Storage	Store at -20 °C for one year. Avoid repeated freeze/thaw cycles. When reconstituted in sterile pH 7.4 0.01M PBS or diluent of antibody the antibody

is stable for at least two weeks at 2-4 °C.

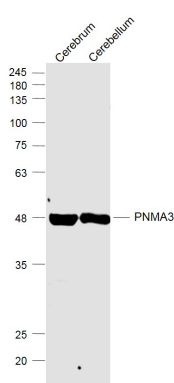
Protein Information

Name	Pnma3
Cellular Location	Nucleus, nucleolus.
Tissue Location	Expressed in the cerebrum and cerebellum.

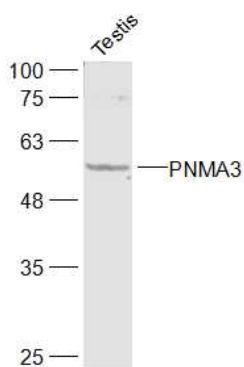
Background

This product as supplied is intended for research use only, not for use in human, therapeutic or diagnostic applications.

Images



Sample: Cerebrum (Mouse) Lysate at 40 ug Cerebellum (Mouse) Lysate at 40 ug Primary: Anti-PNMA3 (AP94767) at 1/1000 dilution Secondary: IRDye800CW Goat Anti-Rabbit IgG at 1/20000 dilution Predicted band size: 52 kD Observed band size: 52 kD



Sample: Testis (Mouse) Lysate at 40 ug Primary: Anti-PNMA3 (AP94767) at 1/1000 dilution Secondary: IRDye800CW Goat Anti-Rabbit IgG at 1/20000 dilution Predicted band size: 52 kD Observed band size: 57 kD

Please note: All products are 'FOR RESEARCH USE ONLY. NOT FOR USE IN DIAGNOSTIC OR THERAPEUTIC PROCEDURES'.