

TMEM179 Rabbit pAb

TMEM179 Rabbit pAb

Catalog # AP94763

Product Information

Application	WB
Primary Accession	Q9CY24
Reactivity	Mouse
Host	Rabbit
Clonality	Polyclonal
Calculated MW	23528
Physical State	Liquid
Immunogen	KLH conjugated synthetic peptide derived from mouse TMEM179
Isotype	IgG
Purity	affinity purified by Protein A
Buffer	0.01M TBS (pH7.4) with 1% BSA, 0.02% Proclin300 and 50% Glycerol.
SUBCELLULAR LOCATION	Membrane.
SIMILARITY	Belongs to the TMEM179 family.
Important Note	This product as supplied is intended for research use only, not for use in human, therapeutic or diagnostic applications.
Background Descriptions	TMEM179B (Transmembrane Protein 179B) is a Protein Coding gene. Among its related pathways are Immune System.

Additional Information

Gene ID	67706
Other Names	Transmembrane protein 179B, Tmem179b
Dilution	WB=1:500-2000
Format	0.01M TBS(pH7.4) with 1% BSA, 0.09% (W/V) sodium azide and 50% Glyce
Storage	Store at -20 °C for one year. Avoid repeated freeze/thaw cycles. When reconstituted in sterile pH 7.4 0.01M PBS or diluent of antibody the antibody is stable for at least two weeks at 2-4 °C.

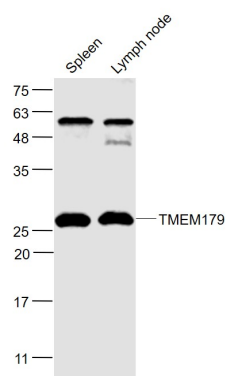
Protein Information

Name	Tmem179b
Cellular Location	Membrane; Multi-pass membrane protein

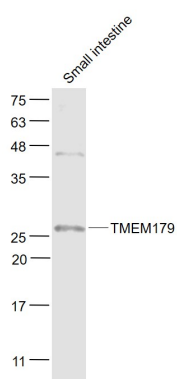
Background

This product as supplied is intended for research use only, not for use in human, therapeutic or diagnostic applications.

Images



Sample: Spleen (Mouse) Lysate at 40 ug Lymph node (Mouse) Lysate at 40 ug Primary: Anti- TMEM179 (AP94763) at 1/1000 dilution Secondary: IRDye800CW Goat Anti-Rabbit IgG at 1/20000 dilution Predicted band size: 24 kD Observed band size: 26 kD



Sample: Small intestine (Mouse) Lysate at 40 ug Primary: Anti- TMEM179 (AP94763) at 1/1000 dilution Secondary: IRDye800CW Goat Anti-Rabbit IgG at 1/20000 dilution Predicted band size: 24 kD Observed band size: 26 kD

Please note: All products are 'FOR RESEARCH USE ONLY. NOT FOR USE IN DIAGNOSTIC OR THERAPEUTIC PROCEDURES'.