

C11orf30 Antibody (N-term)

Affinity Purified Rabbit Polyclonal Antibody (Pab)

Catalog # AP9475a

Product Information

Application	WB, E
Primary Accession	Q7Z589
Other Accession	Q8BMB0 , Q7ZUV7
Reactivity	Human, Mouse
Predicted	Zebrafish, Mouse
Host	Rabbit
Clonality	Polyclonal
Isotype	Rabbit IgG
Clone Names	RB23056
Calculated MW	141468
Antigen Region	46-75

Additional Information

Gene ID	56946
Other Names	Protein EMSY, EMSY, C11orf30
Target/Specificity	This C11orf30 antibody is generated from rabbits immunized with a KLH conjugated synthetic peptide between 46-75 amino acids from the N-terminal region of human C11orf30.
Dilution	WB~~1:2000 E~~Use at an assay dependent concentration.
Format	Purified polyclonal antibody supplied in PBS with 0.09% (W/V) sodium azide. This antibody is purified through a protein A column, followed by peptide affinity purification.
Storage	Maintain refrigerated at 2-8°C for up to 2 weeks. For long term storage store at -20°C in small aliquots to prevent freeze-thaw cycles.
Precautions	C11orf30 Antibody (N-term) is for research use only and not for use in diagnostic or therapeutic procedures.

Protein Information

Name	EMSY (HGNC:18071)
Synonyms	C11orf30
Function	Regulator which is able to repress transcription, possibly via its interaction

with a multiprotein chromatin remodeling complex that modifies the chromatin (PubMed:[14651845](#)). Its interaction with BRCA2 suggests that it may play a central role in the DNA repair function of BRCA2 (PubMed:[14651845](#)). Mediates ligand-dependent transcriptional activation by nuclear hormone receptors (PubMed:[19131338](#)).

Cellular Location

Nucleus. Note=Localizes to DNA damage markers in irradiated cells, suggesting that it participates in DNA repair process

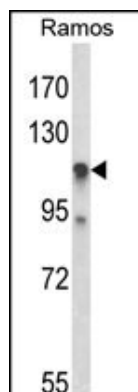
Background

Regulator which is able to repress transcription, possibly via its interaction with a multiprotein chromatin remodeling complex that modifies the chromatin. Its interaction with BRCA2 suggests that it may play a central role in the DNA repair function of BRCA2.

References

- ?Esparza-Gordillo, J., et al. Nat. Genet. 41(5):596-601(2009)
?Garapaty, S., et al. J. Biol. Chem. 284(12):7542-7552(2009)
?Mavaddat, N., et al. Cancer Epidemiol. Biomarkers Prev. 18(1):255-259(2009)
?Vega, A., et al. Gynecol. Oncol. 112(1):210-214(2009)

Images



Western blot analysis of C11orf30 Antibody (N-term) (Cat. #AP9475a) in Ramos cell line lysates (35ug/lane). C11orf30 (arrow) was detected using the purified Pab.

Please note: All products are 'FOR RESEARCH USE ONLY. NOT FOR USE IN DIAGNOSTIC OR THERAPEUTIC PROCEDURES'.