

FCGR1A/CD64 Rabbit pAb

FCGR1A/CD64 Rabbit pAb

Catalog # AP94758

Product Information

Application	WB
Reactivity	Mouse
Host	Rabbit
Clonality	Polyclonal
Calculated MW	41 KDa
Physical State	Liquid
Immunogen	KLH conjugated synthetic peptide derived from mouse FCGR1A/CD64
Epitope Specificity	131-230/404
Isotype	IgG
Purity	affinity purified by Protein A
Buffer	0.01M TBS (pH7.4) with 1% BSA, 0.02% Proclin300 and 50% Glycerol.
SUBCELLULAR LOCATION	Cell membrane; Single-pass type I membrane protein. Note=Stabilized at the cell membrane through interaction with FCER1G.
SIMILARITY	Belongs to the immunoglobulin superfamily. FCGR1 family. Contains 3 Ig-like C2-type (immunoglobulin-like) domains.
SUBUNIT	Interacts with FCER1G; forms a functional signaling complex. Interacts with FLNA; prevents FCGR1A degradation. Interacts with EPB41L2, LAT and PPL. Interacts with HCK and LYN.
Important Note	This product as supplied is intended for research use only, not for use in human, therapeutic or diagnostic applications.
Background Descriptions	This gene encodes a protein that plays an important role in the immune response. This protein is a high-affinity Fc-gamma receptor. The gene is one of three related gene family members located on chromosome 1. [provided by RefSeq, Jul 2008]

Additional Information

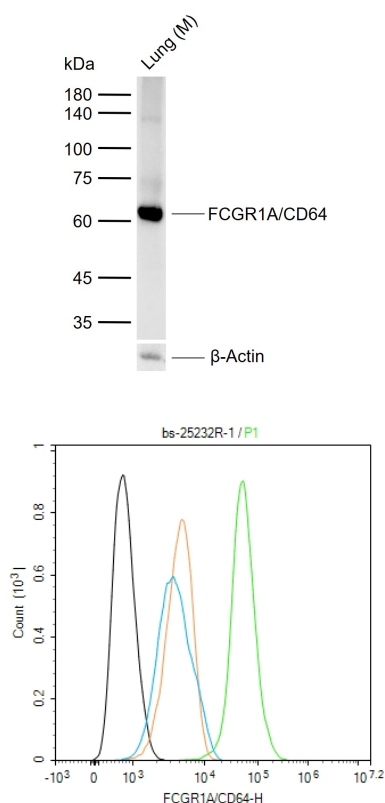
Target/Specificity	Monocyte/macrophage specific.
Dilution	WB=1:500-2000,Flow-Cyt=1ug/Test
Format	0.01M TBS(pH7.4) with 1% BSA, 0.09% (W/V) sodium azide and 50% Glyce
Storage	Store at -20 °C for one year. Avoid repeated freeze/thaw cycles. When reconstituted in sterile pH 7.4 0.01M PBS or diluent of antibody the antibody is stable for at least two weeks at 2-4 °C.

Background

This product as supplied is intended for research use only, not for use in human, therapeutic or diagnostic

applications.

Images



Sample: Lane 1: Mouse Lung tissue lysates Primary: Anti-FCGR1A/CD64 (AP94758) at 1/300 dilution Secondary: IRDye800CW Goat Anti-Rabbit IgG at 1/20000 dilution Predicted band size: 41 kDa Observed band size: 62 kDa

Blank control(black line):Raw264.7. Primary Antibody (green line): Rabbit Anti-CD64 antibody (AP94758) Dilution:1ug/Test; Secondary Antibody(white blue line): Goat Anti-rabbit IgG-AF488 Dilution: 0.5ug/Test. Isotype control(orange line): Normal Rabbit IgG Protocol The cells were incubated in 5%BSA to block non-specific protein-protein interactions for 30 min at room temperature .Cells stained with Primary Antibody for 30 min at room temperature. The secondary antibody used for 40 min at room temperature. Acquisition of 20,000 events was performed.

Please note: All products are 'FOR RESEARCH USE ONLY. NOT FOR USE IN DIAGNOSTIC OR THERAPEUTIC PROCEDURES'.