

C6ORF199 Rabbit pAb

C6ORF199 Rabbit pAb

Catalog # AP94755

Product Information

Application	WB, IHC-P, IHC-F, IF
Primary Accession	Q6ZNF1
Reactivity	Human
Host	Rabbit
Clonality	Polyclonal
Calculated MW	221 KDa
Physical State	Liquid
Immunogen	KLH conjugated synthetic peptide derived from human C6ORF199
Epitope Specificity	1601-1700/1911
Isotype	IgG
Purity	affinity purified by Protein A
Buffer	0.01M TBS (pH7.4) with 1% BSA, 0.02% Proclin300 and 50% Glycerol.
SIMILARITY	Belongs to the adenylate kinase family.
Important Note	This product as supplied is intended for research use only, not for use in human, therapeutic or diagnostic applications.
Background Descriptions	AKD1 is a 1,911 amino acid coiled-coil protein belonging to the adenylate kinase family. AKD1 exists as six alternatively spliced isoforms and is encoded by a gene that maps to human chromosome 6q21. Chromosome 6 makes up nearly 6% of the human genome and contains 170 million base pairs, which encode 1,200 genes. Deletion of a portion of the q arm of chromosome 6 is associated with early onset intestinal cancer, suggesting the presence of a cancer susceptibility locus. A bipolar disorder susceptibility locus is also linked to the q arm of chromosome 6. The PARK2 gene, which is associated with Parkinson's disease, and the genes encoding the major histocompatibility complex proteins are located on chromosome 6. Stickler syndrome, 21-hydroxylase deficiency and maple syrup urine disease are also associated with genes on chromosome 6.

Additional Information

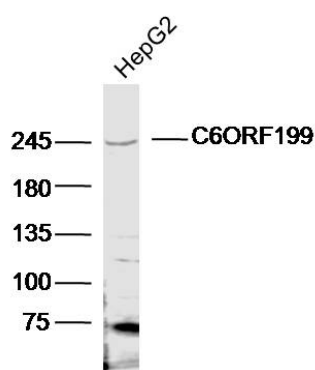
Dilution	WB=1:500-2000,IHC-P=1:100-500,IHC-F=1:100-500,IF=1:100-500
Format	0.01M TBS(pH7.4) with 1% BSA, 0.09% (W/V) sodium azide and 50% Glyce
Storage	Store at -20 °C for one year. Avoid repeated freeze/thaw cycles. When reconstituted in sterile pH 7.4 0.01M PBS or diluent of antibody the antibody is stable for at least two weeks at 2-4 °C.

Protein Information

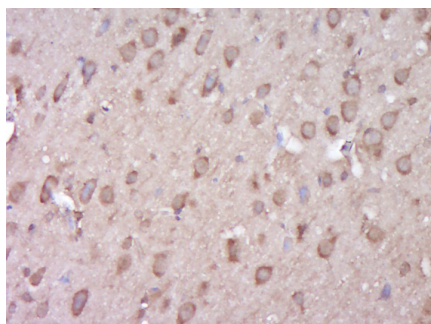
Background

This product as supplied is intended for research use only, not for use in human, therapeutic or diagnostic applications.

Images



Sample: HepG2 (Human) Cell Lysate t 40 ug Primary: Anti-C6ORF199 (AP94755) at 1/300 dilution Secondary: IRDye800CW Goat Anti-Rabbit IgG at 1/20000 dilution Predicted band size: 221 kD Observed band size: 245 kD



Paraformaldehyde-fixed, paraffin embedded (Rat brain); Antigen retrieval by boiling in sodium citrate buffer (pH 6.0) for 15 min; Block endogenous peroxidase by 3% hydrogen peroxide for 20 minutes; Blocking buffer (normal goat serum) at 37°C for 30 min; Antibody incubation with (C6ORF199) Polyclonal Antibody, Unconjugated (AP94755) at 1:400 overnight at 4°C, followed by operating according to SP Kit (Rabbit) (sp-0023) instructions and DAB staining.

Please note: All products are 'FOR RESEARCH USE ONLY. NOT FOR USE IN DIAGNOSTIC OR THERAPEUTIC PROCEDURES'.