

# CD80 Rabbit pAb

CD80 Rabbit pAb  
Catalog # AP94750

## Product Information

---

<b>Application</b>	WB, IHC-P, IHC-F, IF, ICC, E
<b>Reactivity</b>	Rat
<b>Host</b>	Rabbit
<b>Clonality</b>	Polyclonal
<b>Calculated MW</b>	30 KDa
<b>Physical State</b>	Liquid
<b>Immunogen</b>	KLH conjugated synthetic peptide derived from rat CD80
<b>Epitope Specificity</b>	251-321/321
<b>Isotype</b>	IgG
<b>Purity</b>	affinity purified by Protein A
<b>Buffer</b>	0.01M TBS (pH7.4) with 1% BSA, 0.02% Proclin300 and 50% Glycerol.
<b>SUBCELLULAR LOCATION</b>	Membrane; Single-pass type I membrane protein.
<b>SIMILARITY</b>	Contains 1 Ig-like C2-type (immunoglobulin-like) domain. Contains 1 Ig-like V-type (immunoglobulin-like) domain.
<b>Important Note</b>	This product as supplied is intended for research use only, not for use in human, therapeutic or diagnostic applications.
<b>Background Descriptions</b>	CD80 is a member of the Ig superfamily and serves as the ligand for two T cell molecules, CD28 and CTLA4. Interactions between CD28 and CD80 on activated B cells result in enhanced T cell activation. CD80 is rapidly induced on the surface of in vitro activated B cells, Epstein Barr Virus (EBV) transformed B cell lines, Burkitts lymphoma cell lines, freshly isolated follicular B lymphoma cells, T cells, and monocytes. It is also expressed at high levels in dendritic cells. It reacts weakly with a small proportion of non activated normal B cells and with HTLV1 infected T cells. CD80 does not react with peripheral monocytes, resting and activated normal T cells, T cell lines and T cell clones, nor with myelomonocytic cell lines.

## Additional Information

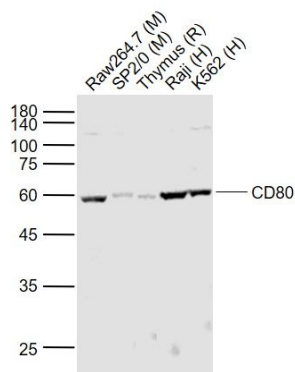
---

<b>Target/Specificity</b>	Expressed on activated B-cells, macrophages and dendritic cells.
<b>Dilution</b>	WB=1:500-2000,IHC-P=1:100-500,IHC-F=1:100-500,ICC/IF=1:100,IF=1:100-500, ELISA=1:5000-10000
<b>Format</b>	0.01M TBS(pH7.4) with 1% BSA, 0.09% (W/V) sodium azide and 50% Glyce
<b>Storage</b>	Store at -20 °C for one year. Avoid repeated freeze/thaw cycles. When reconstituted in sterile pH 7.4 0.01M PBS or diluent of antibody the antibody is stable for at least two weeks at 2-4 °C.

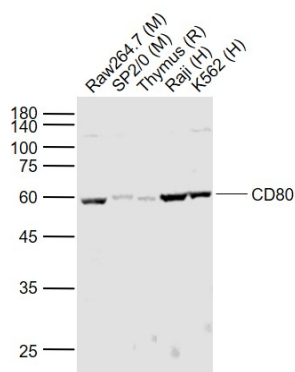
## Background

This product as supplied is intended for research use only, not for use in human, therapeutic or diagnostic applications.

## Images



Sample: Lane 1: Raw264.7 (Mouse) Cell Lysate at 30 ug  
Lane 2: SP2/0 (Mouse) Cell Lysate at 30 ug Lane 3:  
Thymus (Rat) Lysate at 40 ug Lane 4: Raji (Human) Cell  
Lysate at 30 ug Lane 5: K562 (Human) Cell Lysate at 30 ug  
Primary: Anti-CD80 (bs-1479R) at 1/1000 dilution  
Secondary: IRDye800CW Goat Anti-Rabbit IgG at 1/20000  
dilution Predicted band size: 60-65 kD Observed band  
size: 60 kD



Sample: Lane 1: Raw264.7 (Mouse) Cell Lysate at 30 ug  
Lane 2: SP2/0 (Mouse) Cell Lysate at 30 ug Lane 3:  
Thymus (Rat) Lysate at 40 ug Lane 4: Raji (Human) Cell  
Lysate at 30 ug Lane 5: K562 (Human) Cell Lysate at 30 ug  
Primary: Anti-CD80 (AP94750) at 1/1000 dilution  
Secondary: IRDye800CW Goat Anti-Rabbit IgG at 1/20000  
dilution Predicted band size: 60-65 kD Observed band  
size: 60 kD

Please note: All products are 'FOR RESEARCH USE ONLY. NOT FOR USE IN DIAGNOSTIC OR THERAPEUTIC PROCEDURES'.