

Regucalcin Rabbit pAb

Regucalcin Rabbit pAb

Catalog # AP94749

Product Information

Application	WB, IHC-P, IHC-F, IF
Primary Accession	Q5JRR5
Reactivity	Human
Host	Rabbit
Clonality	Polyclonal
Calculated MW	33 KDa
Physical State	Liquid
Immunogen	KLH conjugated synthetic peptide derived from human Regucalcin
Epitope Specificity	65-160/299
Isotype	IgG
Purity	affinity purified by Protein A
Buffer	0.01M TBS (pH7.4) with 1% BSA, 0.02% Proclin300 and 50% Glycerol.
SUBCELLULAR LOCATION	Cytoplasm.
SIMILARITY	Belongs to the SMP-30/CGR1 family.
SUBUNIT	Monomer.
Important Note	This product as supplied is intended for research use only, not for use in human, therapeutic or diagnostic applications.
Background Descriptions	Regucalcin is a Ca ²⁺ binding protein that is encoded by a highly conserved gene in vertebrate species. Regucalcin is greatly expressed in liver and kidney cortex, and the expression is mediated through a Ca ²⁺ signaling mechanism with AP1 and NF1-A1 as transcriptional factors. It plays a multifunctional role as a regulatory protein in intracellular signaling processes in the cytoplasm and nucleus of cells including the maintenance of intracellular Ca ²⁺ homeostasis, the regulation of various Ca ²⁺ dependent protein kinases and tyrosine kinases, protein phosphatases, nitric oxide (NO) synthase, and the suppression of nuclear DNA and RNA syntheses. Regucalcin has suppressive effects on cell proliferation, cell death and apoptosis, and is suggested to play a physiologic role in the maintenance of cellular homeostasis.

Additional Information

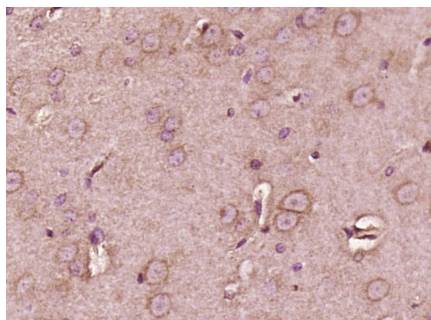
Dilution	WB=1:500-2000,IHC-P=1:100-500,IHC-F=1:100-500,IF=1:100-500,Flow-Cyt=2ug/Test
Format	0.01M TBS(pH7.4) with 1% BSA, 0.09% (W/V) sodium azide and 50% Glyce
Storage	Store at -20 °C for one year. Avoid repeated freeze/thaw cycles. When reconstituted in sterile pH 7.4 0.01M PBS or diluent of antibody the antibody is stable for at least two weeks at 2-4 °C.

Protein Information

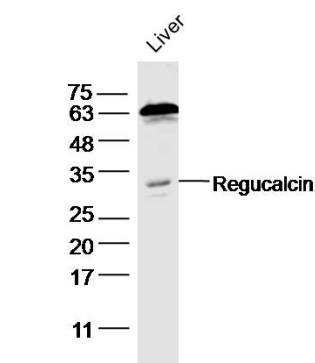
Background

This product as supplied is intended for research use only, not for use in human, therapeutic or diagnostic applications.

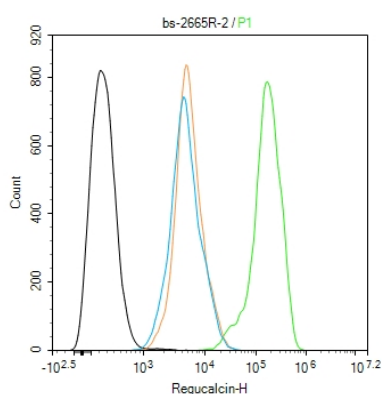
Images



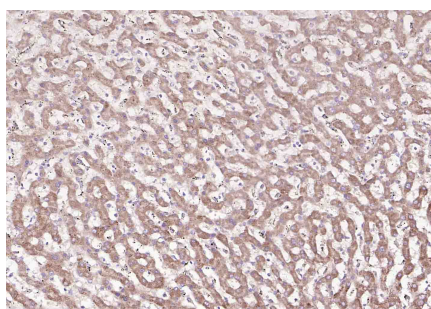
Paraformaldehyde-fixed, paraffin embedded (Rat brain); Antigen retrieval by boiling in sodium citrate buffer (pH6.0) for 15min; Block endogenous peroxidase by 3% hydrogen peroxide for 20 minutes; Blocking buffer (normal goat serum) at 37°C for 30min; Antibody incubation with (Regucalcin) Polyclonal Antibody, Unconjugated (AP94749) at 1:400 overnight at 4°C, followed by operating according to SP Kit(Rabbit) (sp-0023) instructions and DAB staining.



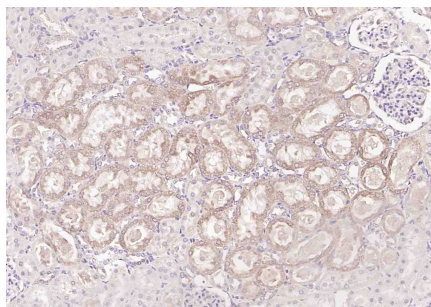
Sample: Liver (Mouse) Lysate at 40 ug Primary: Anti-Regucalcin (AP94749) at 1/300 dilution Secondary: IRDye800CW Goat Anti-Rabbit IgG at 1/20000 dilution Predicted band size: 33 kD Observed band size: 33 kD



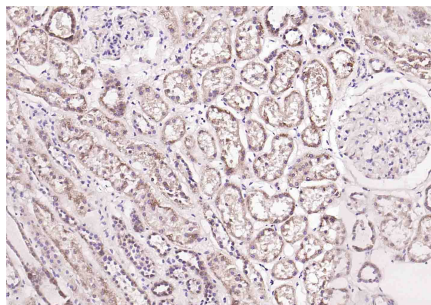
Blank control(black line):HepG2. Primary Antibody (green line): Rabbit Anti-Regucalcin antibody (AP94749) Dilution:2ug/Test; Secondary Antibody(white blue line): Goat anti-rabbit IgG-AF488 Dilution: 0.5ug/Test. Isotype control(orange line): Normal Rabbit IgG Protocol The cells were fixed with 4% PFA (10min at room temperature) and then permeabilized with 90% ice-cold methanol for 20 min at -20°C, The cells were then incubated in 5%BSA to block non-specific protein-protein interactions for 30 min at room temperature .Cells stained with Primary Antibody for 30 min at room temperature. The secondary antibody used for 40 min at room temperature. Acquisition of 20,000 events was performed.



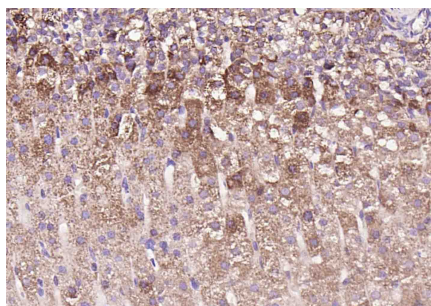
Paraformaldehyde-fixed, paraffin embedded (human liver); Antigen retrieval by boiling in sodium citrate buffer (pH6.0) for 15min; Block endogenous peroxidase by 3% hydrogen peroxide for 20 minutes; Blocking buffer (normal goat serum) at 37°C for 30min; Incubation with (Regucalcin) Polyclonal Antibody, Unconjugated (AP94749) at 1:200 overnight at 4°C, followed by operating according to SP Kit(Rabbit) (sp-0023) instructions and DAB staining.



Paraformaldehyde-fixed, paraffin embedded (rat kidney); Antigen retrieval by boiling in sodium citrate buffer (pH6.0) for 15min; Block endogenous peroxidase by 3% hydrogen peroxide for 20 minutes; Blocking buffer (normal goat serum) at 37°C for 30min; Incubation with (Regucalcin) Polyclonal Antibody, Unconjugated (AP94749) at 1:200 overnight at 4°C, followed by operating according to SP Kit(Rabbit) (sp-0023) instructions and DAB staining.



Paraformaldehyde-fixed, paraffin embedded (human kidney); Antigen retrieval by boiling in sodium citrate buffer (pH6.0) for 15min; Block endogenous peroxidase by 3% hydrogen peroxide for 20 minutes; Blocking buffer (normal goat serum) at 37°C for 30min; Incubation with (Regucalcin) Polyclonal Antibody, Unconjugated (AP94749) at 1:200 overnight at 4°C, followed by operating according to SP Kit(Rabbit) (sp-0023) instructions and DAB staining.



Paraformaldehyde-fixed, paraffin embedded (rat adrenal gland); Antigen retrieval by boiling in sodium citrate buffer (pH6.0) for 15min; Block endogenous peroxidase by 3% hydrogen peroxide for 20 minutes; Blocking buffer (normal goat serum) at 37°C for 30min; Incubation with (Regucalcin) Polyclonal Antibody, Unconjugated (AP94749) at 1:200 overnight at 4°C, followed by operating according to SP Kit(Rabbit) (sp-0023) instructions and DAB staining.

Please note: All products are 'FOR RESEARCH USE ONLY. NOT FOR USE IN DIAGNOSTIC OR THERAPEUTIC PROCEDURES'.