

MRas Rabbit pAb

MRas Rabbit pAb
Catalog # AP94748

Product Information

Application	WB
Primary Accession	O08989
Reactivity	Mouse
Host	Rabbit
Clonality	Polyclonal
Calculated MW	23901
Physical State	Liquid
Immunogen	KLH conjugated synthetic peptide derived from mouse MRas
Epitope Specificity	201-259/259
Isotype	IgG
Purity	affinity purified by Protein A
Buffer	0.01M TBS (pH7.4) with 1% BSA, 0.02% Proclin300 and 50% Glycerol.
SUBCELLULAR LOCATION	Cell membrane; Lipid-anchor; Cytoplasmic side (Potential).
SIMILARITY	Belongs to the small GTPase superfamily. Ras family.
Important Note	This product as supplied is intended for research use only, not for use in human, therapeutic or diagnostic applications.
Background Descriptions	MRas is a member of the RAS superfamily of GTP-binding proteins which are membrane-anchored, intracellular signal transducers responsible for a variety of normal cellular functions. They are oncogenically activated in a significant fraction of tumors. MRas participates in reorganisation of actin cytoskeleton. It is also involved in focal adhesion and can activate MAPK signalling.

Additional Information

Gene ID	17532
Other Names	Ras-related protein M-Ras, 3.6.5.2, Muscle and microspikes Ras, Ras-related protein R-Ras3, X-Ras, Mras, Xras
Target/Specificity	Expression highly restricted to the brain and heart.
Dilution	WB=1:500-2000
Format	0.01M TBS(pH7.4) with 1% BSA, 0.09% (W/V) sodium azide and 50% Glyce
Storage	Store at -20 °C for one year. Avoid repeated freeze/thaw cycles. When reconstituted in sterile pH 7.4 0.01M PBS or diluent of antibody the antibody is stable for at least two weeks at 2-4 °C.

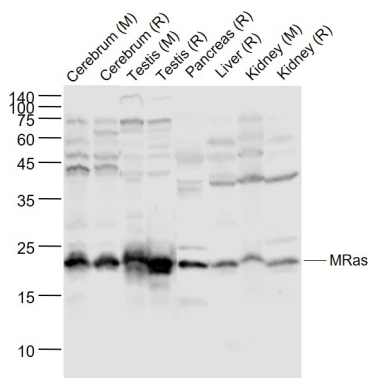
Protein Information

Name	Mras
Synonyms	Xras
Function	Signal transducer in the Ras-MAPK signaling pathway that regulates cell proliferation and survival (By similarity). Core component of the SHOC2-MRAS-PP1c (SMP) holophosphatase complex that regulates the MAPK pathway activation (By similarity). The formation of the SMP complex only occurs when MRAS is GTP-bound (By similarity). MRAS has low intrinsic GTPase activity and may require additional factors for activation (By similarity). The SMP complex specifically dephosphorylates the inhibitory phosphorylation at 'Ser-259' of RAF1 kinase, 'Ser-365' of BRAF kinase and 'Ser-214' of ARAF kinase, stimulating their kinase activities (By similarity).
Cellular Location	Cell membrane; Lipid-anchor; Cytoplasmic side

Background

This product as supplied is intended for research use only, not for use in human, therapeutic or diagnostic applications.

Images



Sample: Lane 1: Cerebrum (Mouse) Lysate at 40 ug Lane 2: Cerebrum (Rat) Lysate at 40 ug Lane 3: Testis (Mouse) Lysate at 40 ug Lane 4: Testis (Rat) Lysate at 40 ug Lane 5: Pancreas (Rat) Lysate at 40 ug Lane 6: Liver (Rat) Lysate at 40 ug Lane 7: Kidney (Mouse) Lysate at 40 ug Lane 8: Kidney (Rat) Lysate at 40 ug Primary: Anti-MRas (AP94748) at 1/1000 dilution Secondary: IRDye800CW Goat Anti-Rabbit IgG at 1/20000 dilution Predicted band size: 21 kD Observed band size: 21 kD

Please note: All products are 'FOR RESEARCH USE ONLY. NOT FOR USE IN DIAGNOSTIC OR THERAPEUTIC PROCEDURES'.