

C1orf173 Rabbit pAb

C1orf173 Rabbit pAb

Catalog # AP94742

Product Information

Application	IHC-P, IHC-F, IF
Primary Accession	Q5RHP9
Reactivity	Human
Host	Rabbit
Clonality	Polyclonal
Calculated MW	168466
Physical State	Liquid
Immunogen	KLH conjugated synthetic peptide derived from human C1orf173
Epitope Specificity	301-400/1530
Isotype	IgG
Purity	affinity purified by Protein A
Buffer	0.01M TBS (pH7.4) with 1% BSA, 0.02% Proclin300 and 50% Glycerol.
Important Note	This product as supplied is intended for research use only, not for use in human, therapeutic or diagnostic applications.
Background Descriptions	Chromosome 1 is the largest human chromosome spanning about 260 million base pairs and making up 8% of the human genome. There are about 3,000 genes on chromosome 1, and considering the great number of genes there are also a large number of diseases associated with chromosome 1. Notably, the rare aging disease Hutchinson-Gilford progeria is associated with the LMNA gene which encodes lamin A. When defective, the LMNA gene product can build up in the nucleus and cause characteristic nuclear blebs. The mechanism of rapidly enhanced aging is unclear and is a topic of continuing exploration. The MUTYH gene is located on chromosome 1 and is partially responsible for familial adenomatous polyposis. Stickler syndrome, Parkinsons, Gaucher disease and Usher syndrome are also associated with chromosome 1. A breakpoint has been identified in 1q which disrupts the DISC1 gene and is linked to schizophrenia. Aberrations in chromosome 1 are found in a variety of cancers including head and neck cancer, malignant melanoma and multiple myeloma. The C1orf173 gene product has been provisionally designated C1orf173 pending further characterization. There are three isoforms of C1orf173 that are produced as a result of alternative splicing events.

Additional Information

Gene ID	127254
Other Names	Glutamate-rich protein 3, ERICH3 (HGNC:25346), C1orf173
Dilution	IHC-P=1:100-500,IHC-F=1:100-500,IF=1:100-500

Format	0.01M TBS(pH7.4) with 1% BSA, 0.09% (W/V) sodium azide and 50% Glyce
Storage	Store at -20 °C for one year. Avoid repeated freeze/thaw cycles. When reconstituted in sterile pH 7.4 0.01M PBS or diluent of antibody the antibody is stable for at least two weeks at 2-4 °C.

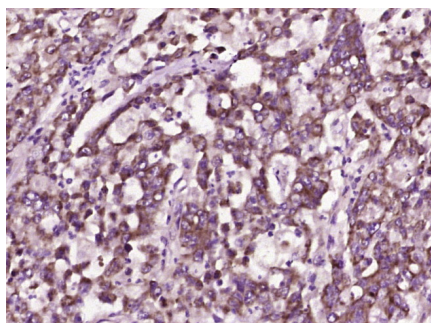
Protein Information

Name	ERICH3 (HGNC:25346)
Synonyms	C1orf173
Function	Component of the primary cilium that controls cilium formation and length (PubMed: 31712586). May function within retrograde intraflagellar transport (IFT)-associated pathways to remove signaling proteins from primary cilia (PubMed: 31712586). Also involved in neuronal vesicle biogenesis and neurotransmitter vesicular function (PubMed: 33230203).
Cellular Location	Cell projection, cilium. Cytoplasm Note=Located in primary cilia, with enriched localization along the entire ciliary axoneme (PubMed:31712586). Localized to the cytoplasm in neurons and appears to be vesicle-associated (PubMed:33230203)
Tissue Location	Expressed in dopaminergic and serotonergic neurons.

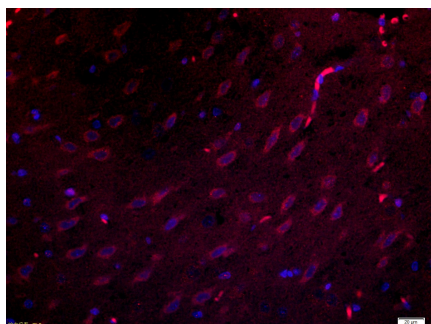
Background

This product as supplied is intended for research use only, not for use in human, therapeutic or diagnostic applications.

Images

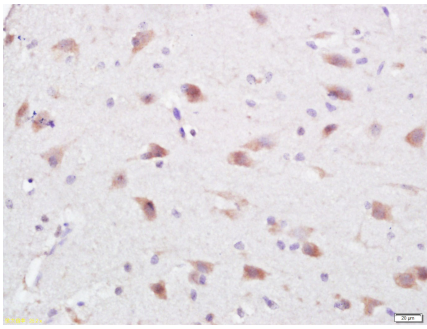


Paraformaldehyde-fixed, paraffin embedded (human colon carcinoma); Antigen retrieval by boiling in sodium citrate buffer (pH6.0) for 15min; Block endogenous peroxidase by 3% hydrogen peroxide for 20 minutes; Blocking buffer (normal goat serum) at 37°C for 30min; Antibody incubation with (C1orf173) Polyclonal Antibody, Unconjugated (AP94742) at 1:400 overnight at 4°C, followed by operating according to SP Kit(Rabbit) (sp-0023) instructions and DAB staining.

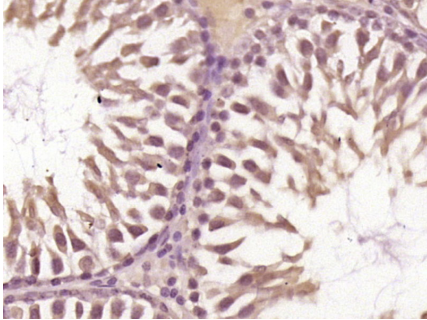


Tissue/cell: rat brain tissue; 4% Paraformaldehyde-fixed and paraffin-embedded; Antigen retrieval: citrate buffer (0.01M, pH 6.0), Boiling bathing for 15min; Blocking buffer (normal goat serum, C-0005) at 37°C for 20 min; Incubation: Anti- C1orf173 Polyclonal Antibody, Unconjugated (AP94742) 1:200, overnight at 4°C; The secondary antibody was Goat Anti-Rabbit IgG, Cy3 conjugated (bs-0295G-Cy3) used at 1:200 dilution for 40 minutes at 37°C. DAPI (5ug/ml, blue, C-0033) was used to stain the cell nuclei

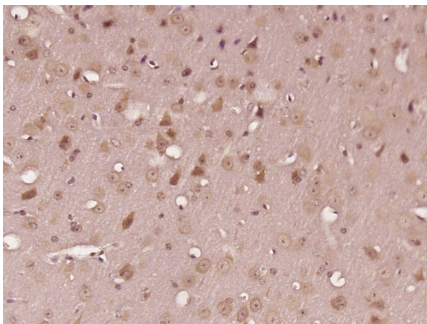
Tissue/cell: rat brain tissue; 4% Paraformaldehyde-fixed



and paraffin-embedded; Antigen retrieval: citrate buffer (0.01M, pH 6.0), Boiling bathing for 15min; Block endogenous peroxidase by 3% Hydrogen peroxide for 30min; Blocking buffer (normal goat serum,C-0005) at 37°C for 20 min; Incubation: Anti-C1orf173 Polyclonal Antibody, Unconjugated(AP94742) 1:500, overnight at 4°C, followed by conjugation to the secondary antibody(SP-0023) and DAB(C-0010) staining



Paraformaldehyde-fixed, paraffin embedded (Rat testis); Antigen retrieval by boiling in sodium citrate buffer (pH6.0) for 15min; Block endogenous peroxidase by 3% hydrogen peroxide for 20 minutes; Blocking buffer (normal goat serum) at 37°C for 30min; Antibody incubation with (C1orf173) Polyclonal Antibody, Unconjugated (AP94742) at 1:400 overnight at 4°C, followed by operating according to SP Kit(Rabbit) (sp-0023) instructions and DAB staining.



Paraformaldehyde-fixed, paraffin embedded (Mouse brain); Antigen retrieval by boiling in sodium citrate buffer (pH6.0) for 15min; Block endogenous peroxidase by 3% hydrogen peroxide for 20 minutes; Blocking buffer (normal goat serum) at 37°C for 30min; Antibody incubation with (C1orf173) Polyclonal Antibody, Unconjugated (AP94742) at 1:400 overnight at 4°C, followed by operating according to SP Kit(Rabbit) (sp-0023) instructions and DAB staining.

Please note: All products are 'FOR RESEARCH USE ONLY. NOT FOR USE IN DIAGNOSTIC OR THERAPEUTIC PROCEDURES'.