

IL22BP Rabbit pAb

IL22BP Rabbit pAb
Catalog # AP94729

Product Information

Application	WB
Reactivity	Mouse
Host	Rabbit
Clonality	Polyclonal

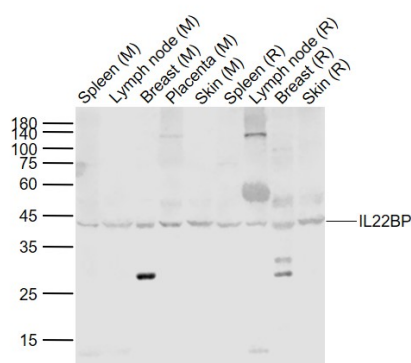
Additional Information

Dilution	WB=1:500-2000
Format	0.01M TBS(pH7.4) with 1% BSA, 0.09% (W/V) sodium azide and 50% Glyce
Storage	Store at -20 °C for one year. Avoid repeated freeze/thaw cycles. When reconstituted in sterile pH 7.4 0.01M PBS or diluent of antibody the antibody is stable for at least two weeks at 2-4 °C.

Background

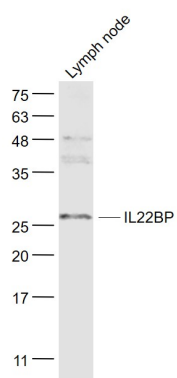
This product as supplied is intended for research use only, not for use in human, therapeutic or diagnostic applications.

Images



Sample: Lane 1: Spleen (Mouse) Lysate at 40 ug Lane 2: Lymph node (Mouse) Lysate at 40 ug Lane 3: Breast (Mouse) Lysate at 40 ug Lane 4: Placenta (Mouse) Lysate at 40 ug Lane 5: Skin (Mouse) Lysate at 40 ug Lane 6: Spleen (Rat) Lysate at 40 ug Lane 7: Lymph node (Rat) Lysate at 40 ug Lane 8: Breast (Rat) Lysate at 40 ug Lane 9: Skin (Rat) Lysate at 40 ug Primary: Anti-IL22BP (AP94729) at 1/1000 dilution Secondary: IRDye800CW Goat Anti-Rabbit IgG at 1/20000 dilution Predicted band size: 48/44/28 kD Observed band size: 42 kD

Sample: Lymph node(Mouse) Lysate at 40 ug Primary: Anti- IL22BP (AP94729) at 1/1000 dilution Secondary: IRDye800CW Goat Anti-Rabbit IgG at 1/20000 dilution Predicted band size: 25 kD Observed band size: 25 kD



Please note: All products are 'FOR RESEARCH USE ONLY. NOT FOR USE IN DIAGNOSTIC OR THERAPEUTIC PROCEDURES'.