

# MC1R Rabbit pAb

MC1R Rabbit pAb  
Catalog # AP94728

## Product Information

---

<b>Application</b>	WB, IHC-P, IHC-F, IF
<b>Reactivity</b>	Human
<b>Host</b>	Rabbit
<b>Clonality</b>	Polyclonal
<b>Calculated MW</b>	35 KDa
<b>Physical State</b>	Liquid
<b>Immunogen</b>	KLH conjugated synthetic peptide derived from human MC1 Receptor
<b>Epitope Specificity</b>	181-280/317
<b>Isotype</b>	IgG
<b>Purity</b>	affinity purified by Protein A
<b>Buffer</b>	0.01M TBS (pH7.4) with 1% BSA, 0.02% Proclin300 and 50% Glycerol.
<b>SUBCELLULAR LOCATION</b>	Cell membrane.
<b>SIMILARITY</b>	Belongs to the G-protein coupled receptor 1 family.
<b>DISEASE</b>	Genetic variations in MC1R are a cause of susceptibility to cutaneous malignant melanoma type 5 (CMM5) [MIM:613099]. Malignant melanoma is a malignant neoplasm of melanocytes, arising de novo or from a pre-existing benign nevus, which occurs most often in the skin but also may involve other sites.
<b>Important Note</b>	This product as supplied is intended for research use only, not for use in human, therapeutic or diagnostic applications.
<b>Background Descriptions</b>	Enables melanocyte-stimulating hormone receptor activity. Involved in intracellular signal transduction; positive regulation of intracellular signal transduction; and positive regulation of transcription by RNA polymerase II. Acts upstream of or within melanin biosynthetic process; pigmentation; and sensory perception of pain. Predicted to be located in membrane. Predicted to be integral component of membrane. Predicted to be active in cytoplasm and plasma membrane. Is expressed in ductus deferens; epididymis; esophagus; and skin. Human ortholog(s) of this gene implicated in familial melanoma; major depressive disorder; melanoma; oculocutaneous albinism type II; and pigmentation disease. Orthologous to human MC1R (melanocortin 1 receptor). [provided by Alliance of Genome Resources, Nov 2021]

## Additional Information

---

<b>Target/Specificity</b>	Melanocytes and corticoadrenal tissue.
<b>Dilution</b>	WB=1:500-2000,IHC-P=1:100-500,IHC-F=1:100-500,IF=1:100-500
<b>Format</b>	0.01M TBS(pH7.4) with 1% BSA, 0.09% (W/V) sodium azide and 50% Glyce

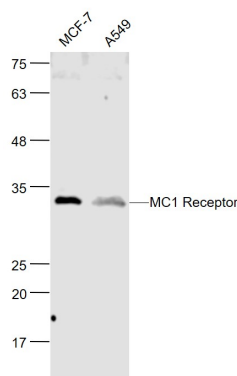
## Storage

Store at -20 °C for one year. Avoid repeated freeze/thaw cycles. When reconstituted in sterile pH 7.4 0.01M PBS or diluent of antibody the antibody is stable for at least two weeks at 2-4 °C.

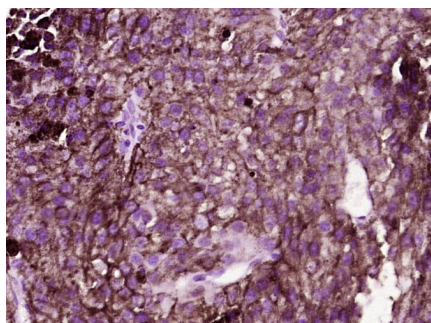
## Background

This product as supplied is intended for research use only, not for use in human, therapeutic or diagnostic applications.

## Images



Sample: MCF-7 (Human) Cell Lysate at 30 ug A549 (Human) Cell Lysate at 30 ug Primary: Anti- MC1 Receptor (AP94728) at 1/1000 dilution Secondary: IRDye800CW Goat Anti-Rabbit IgG at 1/20000 dilution Predicted band size: 35 kD Observed band size: 34 kD



Paraformaldehyde-fixed, paraffin embedded (Human melanoma); Antigen retrieval by boiling in sodium citrate buffer (pH6.0) for 15min; Block endogenous peroxidase by 3% hydrogen peroxide for 20 minutes; Blocking buffer (normal goat serum) at 37°C for 30min; Antibody incubation with (MC1) Polyclonal Antibody, Unconjugated (AP94728) at 1:400 overnight at 4°C, followed by operating according to SP Kit(Rabbit) (sp-0023) instructions and DAB staining.

Please note: All products are 'FOR RESEARCH USE ONLY. NOT FOR USE IN DIAGNOSTIC OR THERAPEUTIC PROCEDURES'.