

MC1R Rabbit pAb

MC1R Rabbit pAb
Catalog # AP94727

Product Information

Application	WB
Reactivity	Mouse
Host	Rabbit
Clonality	Polyclonal
Calculated MW	35 KDa
Physical State	Liquid
Immunogen	KLH conjugated synthetic peptide derived from mouse MC1 Receptor
Epitope Specificity	231-315/315
Isotype	IgG
Purity	affinity purified by Protein A
Buffer	0.01M TBS (pH7.4) with 1% BSA, 0.02% Proclin300 and 50% Glycerol.
SUBCELLULAR LOCATION	Cell membrane.
SIMILARITY	Belongs to the G-protein coupled receptor 1 family.
DISEASE	Genetic variations in MC1R are a cause of susceptibility to cutaneous malignant melanoma type 5 (CMM5) [MIM:613099]. Malignant melanoma is a malignant neoplasm of melanocytes, arising de novo or from a pre-existing benign nevus, which occurs most often in the skin but also may involve other sites.
Important Note	This product as supplied is intended for research use only, not for use in human, therapeutic or diagnostic applications.
Background Descriptions	Enables melanocyte-stimulating hormone receptor activity. Involved in intracellular signal transduction; positive regulation of intracellular signal transduction; and positive regulation of transcription by RNA polymerase II. Acts upstream of or within melanin biosynthetic process; pigmentation; and sensory perception of pain. Predicted to be located in membrane. Predicted to be integral component of membrane. Predicted to be active in cytoplasm and plasma membrane. Is expressed in ductus deferens; epididymis; esophagus; and skin. Human ortholog(s) of this gene implicated in familial melanoma; major depressive disorder; melanoma; oculocutaneous albinism type II; and pigmentation disease. Orthologous to human MC1R (melanocortin 1 receptor). [provided by Alliance of Genome Resources, Nov 2021]

Additional Information

Target/Specificity	Melanocytes and corticoadrenal tissue.
Dilution	WB=1:500-2000
Format	0.01M TBS(pH7.4) with 1% BSA, 0.09% (W/V) sodium azide and 50% Glyce

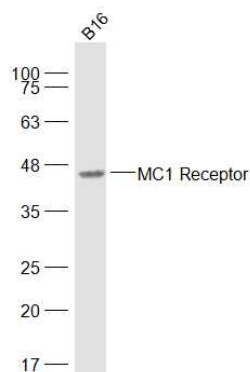
Storage

Store at -20 °C for one year. Avoid repeated freeze/thaw cycles. When reconstituted in sterile pH 7.4 0.01M PBS or diluent of antibody the antibody is stable for at least two weeks at 2-4 °C.

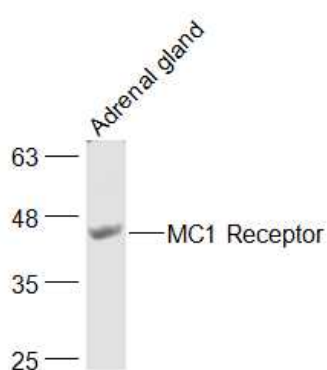
Background

This product as supplied is intended for research use only, not for use in human, therapeutic or diagnostic applications.

Images



Sample: B16(Mouse) Cell Lysate at 30 ug Primary:
Anti-MC1 Receptor (AP94727) at 1/1000 dilution
Secondary: IRDye800CW Goat Anti-Rabbit IgG at 1/20000 dilution Predicted band size: 35 kD Observed band size: 45 kD



Sample: Adrenal gland (Rat) Lysate at 40 ug Primary:
Anti-MC1 Receptor (AP94727) at 1/1000 dilution
Secondary: IRDye800CW Goat Anti-Rabbit IgG at 1/20000 dilution Predicted band size: 35 kD Observed band size: 45 kD

Please note: All products are 'FOR RESEARCH USE ONLY. NOT FOR USE IN DIAGNOSTIC OR THERAPEUTIC PROCEDURES'.