

ECE2 Rabbit pAb

ECE2 Rabbit pAb
Catalog # AP94716

Product Information

Application	WB, IHC-P, IHC-F, IF
Primary Accession	P0DPD6
Reactivity	Human
Host	Rabbit
Clonality	Polyclonal
Calculated MW	91211
Physical State	Liquid
Immunogen	KLH conjugated synthetic peptide derived from human ECE2
Epitope Specificity	601-700/883
Isotype	IgG
Purity	affinity purified by Protein A
Buffer	0.01M TBS (pH7.4) with 1% BSA, 0.02% Proclin300 and 50% Glycerol.
SUBCELLULAR LOCATION	Golgi apparatus membrane; Single-pass type II membrane protein (By similarity). Cytoplasmic granule membrane; Single-pass type II membrane protein (By similarity).
SIMILARITY	In the N-terminal section; belongs to the methyltransferase superfamily. In the C-terminal section; belongs to the peptidase M13 family.
Important Note	This product as supplied is intended for research use only, not for use in human, therapeutic or diagnostic applications.
Background Descriptions	Endothelin-converting enzyme 2 (ECE2) converts big endothelin-1 to endothelin-1. Also involved in the processing of various neuroendocrine peptides, including neurotensin, angiotensin I, substance P, proenkephalin-derived peptides, and prodynorphin-derived peptides. May limit beta-amyloid peptide accumulation in brain. May also have methyltransferase activity. Expressed at high levels in central nervous system. Expressed in adrenal glands, ovary and uterus, and at low levels in heart.

Additional Information

Gene ID	110599583;9718
Other Names	Endothelin-converting enzyme 2, ECE-2, 3.4.24.71, ECE2 (HGNC:13275)
Target/Specificity	Expressed in brain. Strongly down-regulated in inferior parietal lobe from Alzheimer disease patients (at protein level).
Dilution	WB=1:500-2000,IHC-P=1:100-500,IHC-F=1:100-500,IF=1:100-500
Format	0.01M TBS(pH7.4) with 1% BSA, 0.09% (W/V) sodium azide and 50% Glyce
Storage	Store at -20 °C for one year. Avoid repeated freeze/thaw cycles. When

reconstituted in sterile pH 7.4 0.01M PBS or diluent of antibody the antibody is stable for at least two weeks at 2-4 °C.

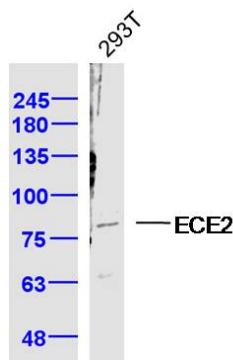
Protein Information

Name	ECE2 (HGNC:13275)
Function	Converts big endothelin-1 to endothelin-1. Also involved in the processing of various neuroendocrine peptides, including neurotensin, angiotensin I, substance P, proenkephalin-derived peptides, and prodynorphin-derived peptides. May play a role in amyloid-beta processing (By similarity).
Cellular Location	Golgi apparatus membrane {ECO:0000250 UniProtKB:F1N476}; Single-pass type II membrane protein. Cytoplasmic vesicle, secretory vesicle membrane {ECO:0000250 UniProtKB:F1N476}

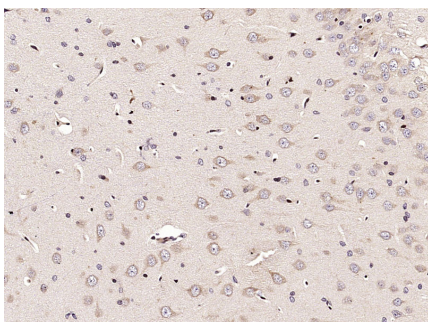
Background

This product as supplied is intended for research use only, not for use in human, therapeutic or diagnostic applications.

Images

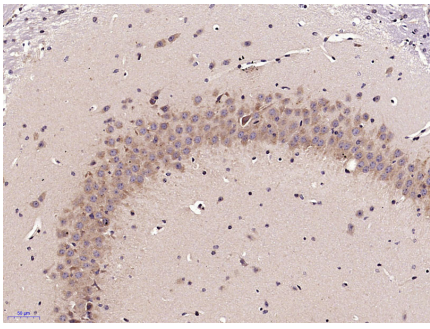


Sample: 293T Cell (Human) Lysate at 40 ug Primary: Anti-ECE2 (AP94716) at 1/300 dilution Secondary: IRDye800CW Goat Anti-Rabbit IgG at 1/20000 dilution Predicted band size: 80-100 kD Observed band size: 80 kD



Paraformaldehyde-fixed, paraffin embedded (Rat brain); Antigen retrieval by microwave in sodium citrate buffer (pH6.0) ; Block endogenous peroxidase by 3% hydrogen peroxide for 30 minutes; Blocking buffer (3% BSA) at RT for 30min; Antibody incubation with (ECE2) Polyclonal Antibody, Unconjugated (AP94716) at 1:400 overnight at 4°C, followed by conjugation to the secondary antibody (labeled with HRP)and DAB staining.

Paraformaldehyde-fixed, paraffin embedded (Mouse brain); Antigen retrieval by microwave in sodium citrate buffer (pH6.0) ; Block endogenous peroxidase by 3% hydrogen peroxide for 30 minutes; Blocking buffer (3% BSA) at RT for 30min; Antibody incubation with (ECE2) Polyclonal Antibody, Unconjugated (AP94716) at 1:400 overnight at 4°C, followed by conjugation to the secondary antibody (labeled with HRP)and DAB staining.



Please note: All products are 'FOR RESEARCH USE ONLY. NOT FOR USE IN DIAGNOSTIC OR THERAPEUTIC PROCEDURES'.