

# CD1c Recombinant Rabbit mAb

CD1c Recombinant Rabbit mAb

Catalog # AP94714

## Product Information

---

<b>Application</b>	WB, IHC-P, IHC-F, IF
<b>Reactivity</b>	Human
<b>Host</b>	Rabbit
<b>Clonality</b>	Recombinant
<b>Calculated MW</b>	36 KDa
<b>Physical State</b>	Liquid
<b>Immunogen</b>	KLH conjugated synthetic peptide derived from human CD1c
<b>Isotype</b>	IgG
<b>Purity</b>	affinity purified by Protein A
<b>Buffer</b>	0.01M TBS (pH7.4) with 1% BSA, 0.02% Proclin300 and 50% Glycerol.
<b>SUBCELLULAR LOCATION</b>	Nucleus.
<b>SIMILARITY</b>	Contains 1 Ig-like (immunoglobulin-like) domain.
<b>Important Note</b>	This product as supplied is intended for research use only, not for use in human, therapeutic or diagnostic applications.
<b>Background Descriptions</b>	This gene encodes a member of the CD1 family of transmembrane glycoproteins, which are structurally related to the major histocompatibility complex (MHC) proteins and form heterodimers with beta-2-microglobulin. The CD1 proteins mediate the presentation of primarily lipid and glycolipid antigens of self or microbial origin to T cells. The human genome contains five CD1 family genes organized in a cluster on chromosome 1. The CD1 family members are thought to differ in their cellular localization and specificity for particular lipid ligands. The protein encoded by this gene is broadly distributed throughout the endocytic system via a tyrosine-based motif in the cytoplasmic tail. Alternatively spliced transcript variants of this gene have been observed, but their full-length nature is not known. [provided by RefSeq, Jul 2008]

## Additional Information

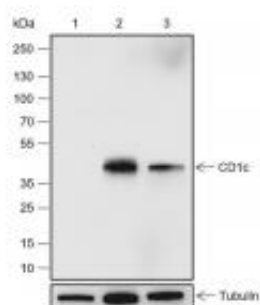
---

<b>Target/Specificity</b>	Expressed on cortical thymocytes, on certain T-cell leukemias, and in various other tissues.
<b>Dilution</b>	WB=1:500-1000,IHC-P=1:100-500,IHC-F=1:50-100,IF=1:50
<b>Format</b>	0.01M TBS(pH7.4) with 1% BSA, 0.09% (W/V) sodium azide and 50% Glyce
<b>Storage</b>	Store at -20 °C for one year. Avoid repeated freeze/thaw cycles. When reconstituted in sterile pH 7.4 0.01M PBS or diluent of antibody the antibody is stable for at least two weeks at 2-4 °C.

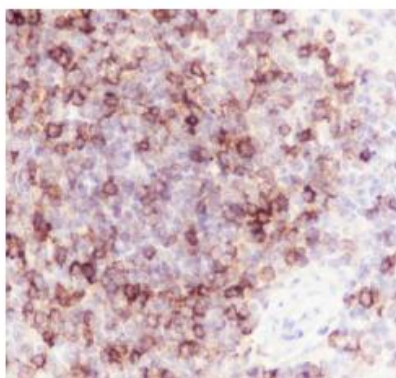
## Background

This product as supplied is intended for research use only, not for use in human, therapeutic or diagnostic applications.

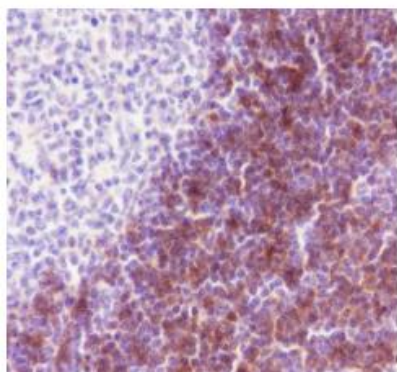
## Images



Blocking buffer: 5% NFDM/TBST Primary Ab dilution: 1:2000 Primary Ab incubation condition: 2 hours at room temperature Secondary Ab: Goat Anti-Rabbit IgG H&L (HRP) Lysate: 1: THP-1 (Negative control), 2: MOLT-4, 3: Jurkat Protein loading quantity: 20 µg Exposure time: 60 s Predicted MW: 38 kDa Observed MW: 43 kDa



Tissue: Human spleen Section type: Formalin-fixed & Paraffin-embedded section Retrieval method: High temperature and high pressure Retrieval buffer: Tris/EDTA buffer, pH 9.0 Primary Ab dilution: 1:100 Primary Ab incubation condition: 1 hour at room temperature Secondary Ab: Anti-Rabbit and Mouse Polymer HRP (Ready to use) Counter stain: Hematoxylin (Blue) Comment: Color brown is the positive signal for AP94714



Tissue: Human tonsil Section type: Formalin-fixed & Paraffin-embedded section Retrieval method: High temperature and high pressure Retrieval buffer: Tris/EDTA buffer, pH 9.0 Primary Ab dilution: 1:100 Primary Ab incubation condition: 1 hour at room temperature Secondary Ab: Anti-Rabbit and Mouse Polymer HRP (Ready to use) Counter stain: Hematoxylin (Blue) Comment: Color brown is the positive signal for AP94714

Please note: All products are 'FOR RESEARCH USE ONLY. NOT FOR USE IN DIAGNOSTIC OR THERAPEUTIC PROCEDURES'.