

# CARD9 Mouse mAb

CARD9 Mouse mAb

Catalog # AP94713

## Product Information

<b>Application</b>	WB
<b>Reactivity</b>	Human
<b>Host</b>	Rabbit
<b>Clonality</b>	Monoclonal

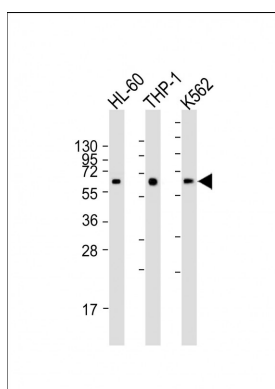
## Additional Information

<b>Dilution</b>	WB=1:500-1000
<b>Format</b>	0.01M TBS(pH7.4) with 1% BSA, 0.09% (W/V) sodium azide and 50% Glyce
<b>Storage</b>	Store at -20 °C for one year. Avoid repeated freeze/thaw cycles. When reconstituted in sterile pH 7.4 0.01M PBS or diluent of antibody the antibody is stable for at least two weeks at 2-4 °C.

## Background

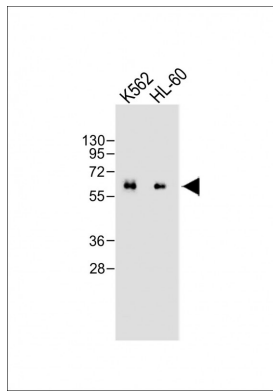
This product as supplied is intended for research use only, not for use in human, therapeutic or diagnostic applications.

## Images



Sample: Lane 1: HL-60 cell lysates Lane 2: THP-1 cell lysates Lane 3: K562 cell lysates Primary: Anti-CARD9 (AP94713) at 1/2000 dilution Secondary: IRDye800CW Goat Anti-Mouse IgG at 1/20000 dilution Predicted band size: 62 kD Observed band size: 62 kD

Sample: Lane 1: K562 cell lysates Lane 2: HL-60 cell lysates Primary: Anti-CARD9 (AP94713) at 1/2000 dilution Secondary: IRDye800CW Goat Anti-Mouse IgG at 1/20000 dilution Predicted band size: 62 kD Observed band size: 62 kD



Please note: All products are 'FOR RESEARCH USE ONLY. NOT FOR USE IN DIAGNOSTIC OR THERAPEUTIC PROCEDURES'.