

LAMP3 Rabbit pAb

LAMP3 Rabbit pAb

Catalog # AP94711

Product Information

Application	WB
Reactivity	Mouse
Host	Rabbit
Clonality	Polyclonal
Calculated MW	44 KDa
Physical State	Liquid
Immunogen	KLH conjugated synthetic peptide derived from mouse LAMP3
Epitope Specificity	321-411/411
Isotype	IgG
Purity	affinity purified by Protein A
Buffer	0.01M TBS (pH7.4) with 1% BSA, 0.02% Proclin300 and 50% Glycerol.
SUBCELLULAR LOCATION	Lysosome membrane.
SIMILARITY	Belongs to the LAMP family.
Important Note	This product as supplied is intended for research use only, not for use in human, therapeutic or diagnostic applications.
Background Descriptions	LAMP3 might change the lysosome function after the transfer of peptide MHC class II molecules to the surface of dendritic cells. It's over expression is associated with an enhanced metastatic potential and may be a prognostic factor for cervical cancer. Expressed in lymphoid organs and dendritic cells and lung. Up regulated in carcinomas of the esophagus, colon, rectum, ureter, stomach, breast, fallopian tube, thyroid and parotid tissues.

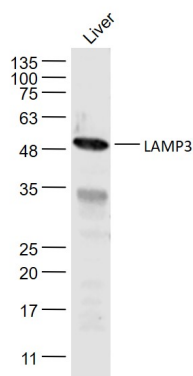
Additional Information

Target/Specificity	Expressed in lymphoid organs and dendritic cells. Expressed in lung. Up-regulated in carcinomas of the esophagus, colon, rectum, ureter, stomach, breast, fallopian tube, thyroid and parotid tissues.
Dilution	WB=1:500-2000
Format	0.01M TBS(pH7.4) with 1% BSA, 0.09% (W/V) sodium azide and 50% Glyce
Storage	Store at -20 °C for one year. Avoid repeated freeze/thaw cycles. When reconstituted in sterile pH 7.4 0.01M PBS or diluent of antibody the antibody is stable for at least two weeks at 2-4 °C.

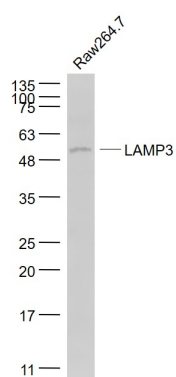
Background

This product as supplied is intended for research use only, not for use in human, therapeutic or diagnostic applications.

Images



Sample: Liver (Mouse) Lysate at 40 ug Primary:
Anti-LAMP3 (AP94711) at 1/1000 dilution Secondary:
IRDye800CW Goat Anti-Rabbit IgG at 1/20000 dilution
Predicted band size: 44 kD Observed band size: 49 kD



Sample: Raw264.7(Mouse) Cell Lysate at 30 ug Primary:
Anti- LAMP3 (AP94711) at 1/1000 dilution Secondary:
IRDye800CW Goat Anti-Rabbit IgG at 1/20000 dilution
Predicted band size: 44 kD Observed band size: 50 kD

Please note: All products are 'FOR RESEARCH USE ONLY. NOT FOR USE IN DIAGNOSTIC OR THERAPEUTIC PROCEDURES'.