

AD7c-NTP Rabbit pAb

AD7c-NTP Rabbit pAb

Catalog # AP94710

Product Information

Application	WB
Reactivity	Human
Host	Rabbit
Clonality	Polyclonal
Calculated MW	41 KDa
Physical State	Liquid
Immunogen	KLH conjugated synthetic peptide derived from human Neuronal thread protein AD7c-NTP
Epitope Specificity	301-375/375
Isotype	IgG
Purity	affinity purified by Protein A
Buffer	Preservative: 0.02% Proclin300, Constituents: 1% BSA, 0.01M PBS, pH7.4.
Important Note	This product as supplied is intended for research use only, not for use in human, therapeutic or diagnostic applications.
Background Descriptions	AD7c-NTP is detected in increased concentration in the cortical neurons, brain-tissue extracts, cerebrospinal fluid, and urine early in the course of AD neurodegeneration, and its level is positively correlated with the severity of dementia. All these characteristics make it a possible biomarker for AD.

Additional Information

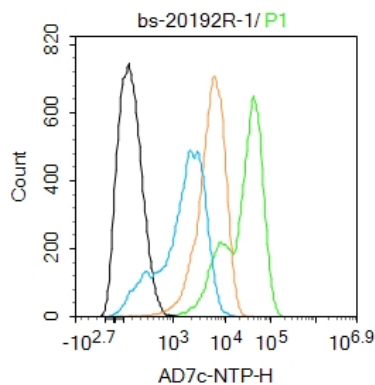
Dilution	WB=1:500-2000,Flow-Cyt=1ug/Test
Format	0.01M TBS(pH7.4) with 1% BSA, 0.09% (W/V) sodium azide and 50% Glyce
Storage	Store at -20 °C for one year. Avoid repeated freeze/thaw cycles. When reconstituted in sterile pH 7.4 0.01M PBS or diluent of antibody the antibody is stable for at least two weeks at 2-4 °C.

Background

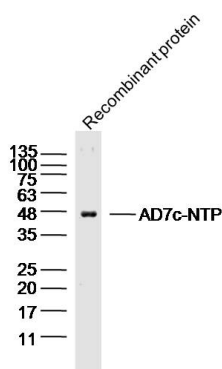
This product as supplied is intended for research use only, not for use in human, therapeutic or diagnostic applications.

Images

Blank control(black line):U87MG. Primary Antibody (green line): Rabbit Anti-AD7c-NTP antibody (AP94710)
Dilution:1ug/Test; Secondary Antibody : Goat anti-rabbit



IgG-AF488 Dilution: 0.5ug/Test. Negative control(white blue line): PBS Isotype control(orange line): Normal Rabbit IgG Protocol The cells were fixed with 4% PFA (10min at room temperature)and then permeabilized with 90% ice-cold methanol for 20 min at -20°C.The cells were then incubated in 5%BSA to block non-specific protein-protein interactions for 30 min at room temperature .Cells stained with Primary Antibody for 30 min at room temperature. The secondary antibody used for 40 min at room temperature. Acquisition of 20,000 events was performed.



Sample: AD7c-NTP recombinant protein(Human) Lysate at 100ng Primary: Anti-AD7c-NTP(AP94710)at 1/300 dilution Secondary: IRDye800CW Goat Anti-RabbitIgG at 1/20000 dilution Predicted band size: 41kD Observed band size: 46kD

Please note: All products are 'FOR RESEARCH USE ONLY. NOT FOR USE IN DIAGNOSTIC OR THERAPEUTIC PROCEDURES'.