

MCT2 Rabbit pAb

MCT2 Rabbit pAb
Catalog # AP94707

Product Information

| | |
|--------------------------------|--|
| Application | WB |
| Reactivity | Mouse |
| Host | Rabbit |
| Clonality | Polyclonal |
| Calculated MW | 52 KDa |
| Physical State | Liquid |
| Immunogen | KLH conjugated synthetic peptide derived from mouse MCT2 |
| Epitope Specificity | 411-478/478 |
| Isotype | IgG |
| Purity | affinity purified by Protein A |
| Buffer | 0.01M TBS (pH7.4) with 1% BSA, 0.02% Proclin300 and 50% Glycerol. |
| SUBCELLULAR LOCATION | Cell membrane; Multi-pass membrane protein. |
| SIMILARITY | Belongs to the major facilitator superfamily. Monocarboxylate porter (TC 2.A.1.13) family. |
| SUBUNIT | Interacts with GRID2IP. |
| Important Note | This product as supplied is intended for research use only, not for use in human, therapeutic or diagnostic applications. |
| Background Descriptions | Tissues with few or no mitochondria, such as erythrocytes and tumor cells, depend largely on glycolysis to generate ATP. The major end products of glycolysis, pyruvate and lactate, must be eliminated from these cells to enable continued glycolytic flux and prevent toxic effects. H ⁺ /monocarboxylate transporters (MCTs) mediate the transport of lactate and pyruvate. Human MCT2 has a high affinity for the transport of pyruvate (summary by Lin et al., 1998 [PubMed 9786900]).[supplied by OMIM, Feb 2011]. |

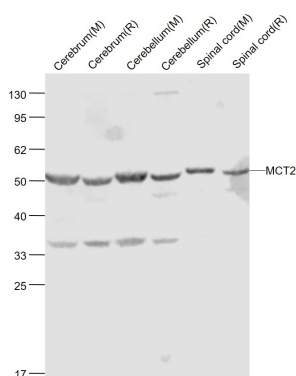
Additional Information

| | |
|---------------------------|---|
| Target/Specificity | High expression in testis, moderate to low in spleen, heart, kidney, pancreas, skeletal muscle, brain and Leukocyte. Restricted expression in normal tissues, but widely expressed in cancer cells. |
| Dilution | WB=1:500-2000 |
| Format | 0.01M TBS(pH7.4) with 1% BSA, 0.09% (W/V) sodium azide and 50% Glyce |
| Storage | Store at -20 °C for one year. Avoid repeated freeze/thaw cycles. When reconstituted in sterile pH 7.4 0.01M PBS or diluent of antibody the antibody is stable for at least two weeks at 2-4 °C. |

Background

This product as supplied is intended for research use only, not for use in human, therapeutic or diagnostic applications.

Images



Sample: Cerebrum (Mouse) Lysate at 40 ug Cerebrum (Rat) Lysate at 40 ug Cerebellum (Mouse) Lysate at 40 ug Cerebellum (Rat) Lysate at 40 ug Spinal cord (Mouse) Lysate at 40 ug Spinal cord (Rat) Lysate at 40 ug Primary: Anti-MCT2 (AP94707) at 1/1000 dilution Secondary: IRDye800CW Goat Anti-Rabbit IgG at 1/20000 dilution Predicted band size: 53 kD Observed band size: 50 kD

Please note: All products are 'FOR RESEARCH USE ONLY. NOT FOR USE IN DIAGNOSTIC OR THERAPEUTIC PROCEDURES'.