

GPR55 Rabbit pAb

GPR55 Rabbit pAb
Catalog # AP94704

Product Information

Application	WB
Reactivity	Mouse
Host	Rabbit
Clonality	Polyclonal
Calculated MW	37 KDa
Physical State	Liquid
Immunogen	KLH conjugated synthetic peptide derived from mouse CD69
Epitope Specificity	302-313/327
Isotype	IgG
Purity	affinity purified by Protein A

Buffer	0.01M TBS (pH7.4) with 1% BSA, 0.02% Proclin300 and 50% Glycerol.
SUBCELLULAR LOCATION	Cell membrane; Multi-pass membrane protein.
SIMILARITY	Belongs to the G-protein coupled receptor 1 family.

**Post-translational
modifications**

Important Note This product as supplied is intended for research use only, not for use in human, therapeutic or diagnostic applications.

Background Descriptions G protein-coupled receptors (GPCRs, or GPRs) contain 7 transmembrane domains and transduce extracellular signals through heterotrimeric G proteins. GPCR GPR55 is a member of this family (subfamily Orphan-A). It has been reported to be expressed in the brain, where mRNA transcripts were detected in the caudate nucleus and putamen, but not detected in the hippocampus, thalamus, pons cerebellum, frontal cortex of the brain. ESTs have been isolated from liver/spleen libraries.

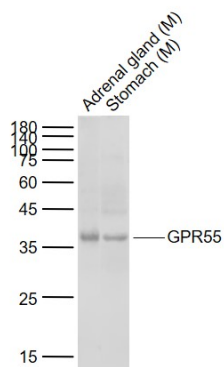
Additional Information

Target/Specificity	Expressed in the caudate nucleus and putamen, but not detected in the hippocampus, thalamus, pons cerebellum, frontal cortex of the brain or in the liver. Expressed in osteoclasts and osteoblasts.
Dilution	WB=1:500-2000
Format	0.01M TBS(pH7.4) with 1% BSA, 0.09% (W/V) sodium azide and 50% Glyce
Storage	Store at -20 °C for one year. Avoid repeated freeze/thaw cycles. When reconstituted in sterile pH 7.4 0.01M PBS or diluent of antibody the antibody is stable for at least two weeks at 2-4 °C.

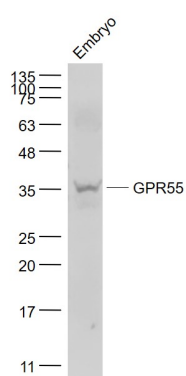
Background

This product as supplied is intended for research use only, not for use in human, therapeutic or diagnostic applications.

Images



Sample: Lane 1: Mouse Adrenal gland tissue lysates Lane 2: Mouse Stomach tissue lysates Primary: Anti-GPR55 (AP94704) at 1/1000 dilution Secondary: IRDye800CW Goat Anti-Rabbit IgG at 1/20000 dilution Predicted band size: 37 kD Observed band size: 37 kD



Sample: Embryo(Mouse) Lysate at 40 ug Primary: Anti-GPR55 (AP94704) at 1/1000 dilution Secondary: IRDye800CW Goat Anti-Rabbit IgG at 1/20000 dilution Predicted band size: 37 kD Observed band size: 37 kD

Please note: All products are 'FOR RESEARCH USE ONLY. NOT FOR USE IN DIAGNOSTIC OR THERAPEUTIC PROCEDURES'.