

TSEN15/C1orf19 Rabbit pAb

TSEN15/C1orf19 Rabbit pAb

Catalog # AP94699

Product Information

Application	WB, IHC-P, IHC-F, IF
Reactivity	Human
Host	Rabbit
Clonality	Polyclonal
Calculated MW	19 KDa
Physical State	Liquid
Immunogen	KLH conjugated synthetic peptide derived from human C1orf19/SEN15
Epitope Specificity	51-150/171
Isotype	IgG
Purity	affinity purified by Protein A
Buffer	0.01M TBS (pH7.4) with 1% BSA, 0.02% Proclin300 and 50% Glycerol.
SUBCELLULAR LOCATION	Nucleus (Probable). Nucleus, nucleolus (Probable). Note=May be transiently localized in the nucleolus (Probable).
SIMILARITY	Belongs to the SEN15 family.
SUBUNIT	Homodimer. tRNA splicing endonuclease is a heterotetramer composed of SEN2, SEN15, SEN34/LENG5 and SEN54. tRNA splicing endonuclease complex also contains proteins of the Pre-mRNA 3' end processing machinery such as CLP1, CPSF1, CPSF4 and CSTF2.
Important Note	This product as supplied is intended for research use only, not for use in human, therapeutic or diagnostic applications.
Background Descriptions	SEN15, also known as TSEN15 (tRNA-splicing endonuclease subunit Sen15) or C1orf19, is a nuclear protein that plays a role in tRNA splicing. Widely expressed with highest expression in testis and uterus, SEN15 is a non-catalytic subunit of the multi-protein tRNA-splicing endonuclease complex. The endonuclease complex is responsible for identifying and cleaving pre-tRNA at both 5' and 3' splice sites, thereby releasing introns and free tRNA molecules with 2',3' cyclic phosphates and 5'-OH termini. In addition to its role in pre-tRNA splicing, the endonuclease complex participates in mRNA processing and, via its association with pre-mRNA processing factors, is thought to link pre-tRNA and pre-mRNA splicing events. As a subunit of the complex, SEN15 participates in protein expression and, ultimately, cell growth and division.

Additional Information

Target/Specificity	Widely expressed. Highly expressed in testis and uterus.
Dilution	WB=1:500-2000,IHC-P=1:100-500,IHC-F=1:100-500,IF=1:50-200
Format	0.01M TBS(pH7.4) with 1% BSA, 0.09% (W/V) sodium azide and 50% Glyce

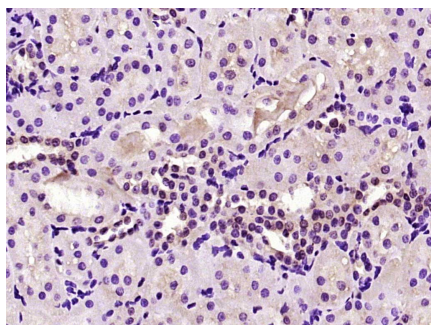
Storage

Store at -20 °C for one year. Avoid repeated freeze/thaw cycles. When reconstituted in sterile pH 7.4 0.01M PBS or diluent of antibody the antibody is stable for at least two weeks at 2-4 °C.

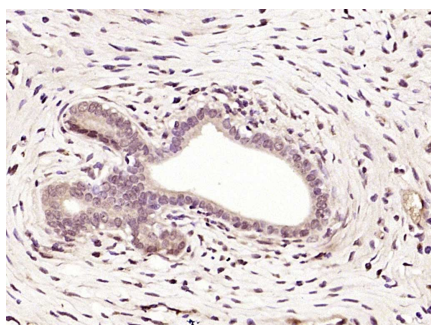
Background

This product as supplied is intended for research use only, not for use in human, therapeutic or diagnostic applications.

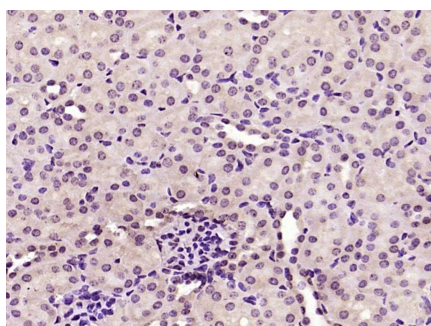
Images



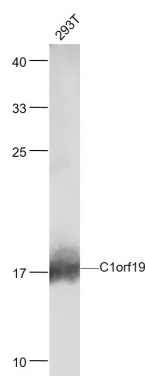
Paraformaldehyde-fixed, paraffin embedded (rat kidney); Antigen retrieval by boiling in sodium citrate buffer (pH6.0) for 15min; Block endogenous peroxidase by 3% hydrogen peroxide for 20 minutes; Blocking buffer (normal goat serum) at 37°C for 30min; Antibody incubation with (C1orf19) Polyclonal Antibody, Unconjugated (AP94699) at 1:200 overnight at 4°C, followed by operating according to SP Kit(Rabbit) (sp-0023) instructions and DAB staining.



Paraformaldehyde-fixed, paraffin embedded (rat uterus); Antigen retrieval by boiling in sodium citrate buffer (pH6.0) for 15min; Block endogenous peroxidase by 3% hydrogen peroxide for 20 minutes; Blocking buffer (normal goat serum) at 37°C for 30min; Antibody incubation with (C1orf19) Polyclonal Antibody, Unconjugated (AP94699) at 1:200 overnight at 4°C, followed by operating according to SP Kit(Rabbit) (sp-0023) instructions and DAB staining.



Paraformaldehyde-fixed, paraffin embedded (mouse kidney); Antigen retrieval by boiling in sodium citrate buffer (pH6.0) for 15min; Block endogenous peroxidase by 3% hydrogen peroxide for 20 minutes; Blocking buffer (normal goat serum) at 37°C for 30min; Antibody incubation with (C1orf19) Polyclonal Antibody, Unconjugated (AP94699) at 1:200 overnight at 4°C, followed by operating according to SP Kit(Rabbit) (sp-0023) instructions and DAB staining.



Sample: 293T (Human) Cell Lysate at 30 ug Primary: Anti-C1orf19 (AP94699) at 1/1000 dilution Secondary: IRDye800CW Goat Anti-Rabbit IgG at 1/20000 dilution Predicted band size: 19 kD Observed band size: 17 kD

Please note: All products are 'FOR RESEARCH USE ONLY. NOT FOR USE IN DIAGNOSTIC OR THERAPEUTIC PROCEDURES'.