

PI3-kinase p110 subunit beta Recombinant Rabbit mAb

PI3-kinase p110 subunit beta Recombinant Rabbit mAb

Catalog # AP94694

Product Information

Application	WB, IHC-P, IHC-F, IF, ICC
Primary Accession	Q24JU2
Reactivity	Human
Host	Rabbit
Clonality	Recombinant
Calculated MW	123 KDa
Physical State	Liquid
Immunogen	A synthesized peptide derived from human PI3 kinase p110 beta
Epitope Specificity	401-450
Isotype	IgG
Purity	affinity purified by Protein A
Buffer	0.01M TBS (pH7.4) with 1% BSA, 0.02% Proclin300 and 50% Glycerol.
SUBCELLULAR LOCATION	Cytoplasm. Nucleus. Note=Interaction with PIK3R2 is required for nuclear localization and export.
SIMILARITY	Belongs to the PI3/PI4-kinase family.Contains 1 C2 PI3K-type domain.Contains 1 PI3K-ABD domain.Contains 1 PI3K-RBD domain.Contains 1 PI3K/PI4K domain.Contains 1 PIK helical domain.
SUBUNIT	PIK3R2 or PIK3R3). Interaction with PIK3R2 is required for nuclear localization and nuclear export. Part of a complex with PIK3R1 and PTEN. Binding to PTEN may antagonize the lipid kinase activity under normal growth conditions. Part of a complex involved in autophagosome formation composed of PIK3C3 and PIK3R4. Interacts with BECN1, ATG14 and RAB5A.
Post-translational modifications	Phosphorylation at Ser-1070 down-regulates lipid kinase activity.
Important Note	This product as supplied is intended for research use only, not for use in human, therapeutic or diagnostic applications.
Background Descriptions	This gene encodes an isoform of the catalytic subunit of phosphoinositide 3-kinase (PI3K). These kinases are important in signaling pathways involving receptors on the outer membrane of eukaryotic cells and are named for their catalytic subunit. The encoded protein is the catalytic subunit for PI3Kbeta (PI3KB). PI3KB has been shown to be part of the activation pathway in neutrophils which have bound immune complexes at sites of injury or infection. Alternative splicing results in multiple transcript variants. [provided by RefSeq, Dec 2011].

Additional Information

Target/Specificity	Expressed ubiquitously.
Dilution	WB=1:500-2000,IHC-P=1:100-500,IHC-F=1:100-500,ICC/IF=1:200,IF=1:100-500

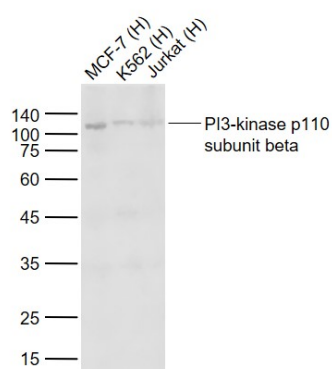
Format	0.01M TBS(pH7.4) with 1% BSA, 0.09% (W/V) sodium azide and 50% Glycerol
Storage	Store at -20 °C for one year. Avoid repeated freeze/thaw cycles. When reconstituted in sterile pH 7.4 0.01M PBS or diluent of antibody the antibody is stable for at least two weeks at 2-4 °C.

Protein Information

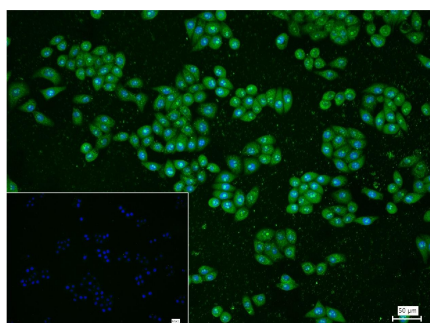
Background

This product as supplied is intended for research use only, not for use in human, therapeutic or diagnostic applications.

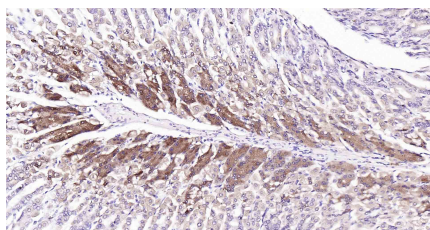
Images



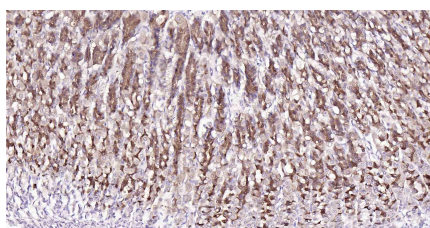
Sample: Lane 1: Human MCF-7 cell lysates Lane 2: Human K562 cell lysates Lane 3: Human Jurkat cell lysates
 Primary: Anti-PI3-kinase p110 subunit beta (AP94694) at 1/1000 dilution Secondary: IRDye800CW Goat Anti-Rabbit IgG at 1/20000 dilution Predicted band size: 123 kD
 Observed band size: 110 kD



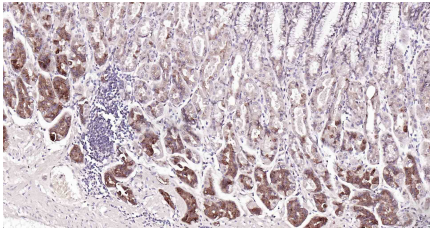
4% Paraformaldehyde-fixed MCF-7 (H) cell; Triton X-100 at r.t. for 20 min; Antibody incubation with (PI3-kinase p110 subunit beta) monoclonal Antibody, unconjugated (AP94694) 1:200, 90 min at 37°C; followed by conjugated Goat Anti-Rabbit IgG antibody (green, bs-0295G-FITC) at 37°C for 90 min, DAPI (blue, C02-04002) was used to stain the cell nuclei. PBS instead of the primary antibody was used as the blank control.



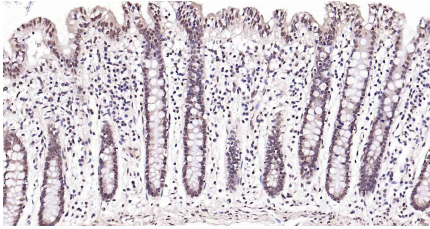
Paraformaldehyde-fixed, paraffin embedded Mouse Stomach; Antigen retrieval by boiling in sodium citrate buffer (pH6.0) for 15 min; Antibody incubation with PI3-kinase p110 subunit beta Monoclonal Antibody, Unconjugated(AP94694) at 1:100 overnight at 4°C, followed by conjugation to the SP Kit (Rabbit, SP-0023) and DAB (C-0010) staining.



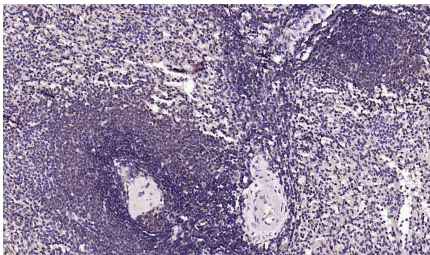
Paraformaldehyde-fixed, paraffin embedded Rat Stomach; Antigen retrieval by boiling in sodium citrate buffer (pH6.0) for 15 min; Antibody incubation with PI3-kinase p110 subunit beta Monoclonal Antibody, Unconjugated(AP94694) at 1:100 overnight at 4°C, followed by conjugation to the SP Kit (Rabbit, SP-0023) and DAB (C-0010) staining.



Paraformaldehyde-fixed, paraffin embedded Human Fundus; Antigen retrieval by boiling in sodium citrate buffer (pH6.0) for 15 min; Antibody incubation with PI3-kinase p110 subunit beta Monoclonal Antibody, Unconjugated(AP94694) at 1:100 overnight at 4°C, followed by conjugation to the SP Kit (Rabbit, SP-0023) and DAB (C-0010) staining.



Paraformaldehyde-fixed, paraffin embedded Human Colon; Antigen retrieval by boiling in sodium citrate buffer (pH6.0) for 15 min; Antibody incubation with PI3-kinase p110 subunit beta Monoclonal Antibody, Unconjugated(AP94694) at 1:100 overnight at 4°C, followed by conjugation to the SP Kit (Rabbit, SP-0023) and DAB (C-0010) staining.



Paraformaldehyde-fixed, paraffin embedded Human Spleen; Antigen retrieval by boiling in sodium citrate buffer (pH6.0) for 15 min; Antibody incubation with PI3-kinase p110 subunit beta Monoclonal Antibody, Unconjugated(AP94694) at 1:100 overnight at 4°C, followed by conjugation to the SP Kit (Rabbit, SP-0023) and DAB (C-0010) staining.

Please note: All products are 'FOR RESEARCH USE ONLY. NOT FOR USE IN DIAGNOSTIC OR THERAPEUTIC PROCEDURES'.