

# IL28 Receptor alpha Rabbit pAb

IL28 Receptor alpha Rabbit pAb

Catalog # AP94679

## Product Information

---

<b>Application</b>	WB
<b>Primary Accession</b>	<a href="#">Q8CGK5</a>
<b>Reactivity</b>	Mouse
<b>Host</b>	Rabbit
<b>Clonality</b>	Polyclonal
<b>Calculated MW</b>	59976
<b>Physical State</b>	Liquid
<b>Immunogen</b>	KLH conjugated synthetic peptide derived from mouse IL28 Receptor alpha
<b>Epitope Specificity</b>	21-120/520
<b>Isotype</b>	IgG
<b>Purity</b>	affinity purified by Protein A
<b>Buffer</b>	0.01M TBS (pH7.4) with 1% BSA, 0.02% Proclin300 and 50% Glycerol.
<b>SUBCELLULAR LOCATION</b>	Membrane; Single-pass type I membrane protein
<b>SIMILARITY</b>	Belongs to the type II cytokine receptor family. Contains 1 fibronectin type-III domain.
<b>SUBUNIT</b>	Heterodimer with IL10RB.
<b>Important Note</b>	This product as supplied is intended for research use only, not for use in human, therapeutic or diagnostic applications.
<b>Background Descriptions</b>	The protein encoded by this gene belongs to the class II cytokine receptor family. This protein forms a receptor complex with interleukine 10 receptor, beta (IL10RB). The receptor complex has been shown to interact with three closely related cytokines, including interleukin 28A (IL28A), interleukin 28B (IL28B), and interleukin 29 (IL29). The expression of all three cytokines can be induced by viral infection. The cells overexpressing this protein have been found to have enhanced responses to IL28A and IL29, but decreased response to IL28B. Three alternatively spliced transcript variants encoding distinct isoforms have been reported. [provided by RefSeq, Jul 2008]

## Additional Information

---

<b>Gene ID</b>	242700
<b>Other Names</b>	Interferon lambda receptor 1, IFN-lambda R1, Cytokine receptor class-II member 12, Cytokine receptor family 2 member 12, CRF2-12, Interleukin-28 receptor subunit alpha, IL-28 receptor subunit alpha, IL-28R-alpha, IL-28RA, Ifnlr1, IL28ra
<b>Target/Specificity</b>	Widely expressed.
<b>Dilution</b>	WB=1:500-2000

<b>Format</b>	0.01M TBS(pH7.4) with 1% BSA, 0.09% (W/V) sodium azide and 50% Glyce
<b>Storage</b>	Store at -20 °C for one year. Avoid repeated freeze/thaw cycles. When reconstituted in sterile pH 7.4 0.01M PBS or diluent of antibody the antibody is stable for at least two weeks at 2-4 °C.

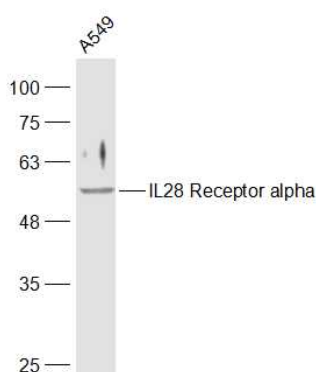
## Protein Information

<b>Name</b>	Ifnlr1
<b>Synonyms</b>	Il28ra
<b>Function</b>	The IFNLR1/IL10RB dimer is a receptor for the cytokine ligands IFNL2 and IFNL3 and mediates their antiviral activity. The ligand/receptor complex stimulate the activation of the JAK/STAT signaling pathway leading to the expression of IFN-stimulated genes (ISG), which contribute to the antiviral state. Determines the cell type specificity of the lambda interferon action. Shows a more restricted pattern of expression in the epithelial tissues thereby limiting responses to lambda interferons primarily to epithelial cells of the respiratory, gastrointestinal, and reproductive tracts. Seems not to be essential for early virus-activated host defense in vaginal infection, but plays an important role in Toll-like receptor (TLR)- induced antiviral defense. Plays a significant role in the antiviral immune defense in the intestinal epithelium.
<b>Cellular Location</b>	Membrane; Single-pass type I membrane protein

## Background

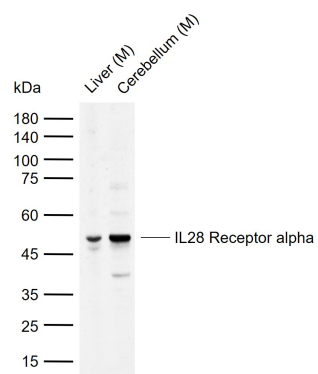
This product as supplied is intended for research use only, not for use in human, therapeutic or diagnostic applications.

## Images



Sample: A549(Human) Cell Lysate at 30 ug Primary: Anti-IL28 Receptor alpha (AP94679) at 1/300 dilution Secondary: IRDye800CW Goat Anti-Rabbit IgG at 1/20000 dilution Predicted band size: 56 kD Observed band size: 56 kD

Sample: Lane 1: Mouse Liver tissue lysates Lane 2: Mouse Cerebellum tissue lysates Primary: Anti-IL28 Receptor alpha (AP94679) at 1/1000 dilution Secondary: IRDye800CW Goat Anti-Rabbit IgG at 1/20000 dilution Predicted band size: 56 kDa Observed band size: 50 kDa



Please note: All products are 'FOR RESEARCH USE ONLY. NOT FOR USE IN DIAGNOSTIC OR THERAPEUTIC PROCEDURES'.