

PPP3CB Mouse mAb

PPP3CB Mouse mAb

Catalog # AP94662

Product Information

Application	WB, IHC-P, IHC-F, IF
Host	Rabbit
Clonality	Monoclonal
Physical State	Liquid
Isotype	IgG1, Kappa
Purity	affinity purified by Protein G
Buffer	0.01M TBS (pH7.4) with 1% BSA, 0.02% Proclin300 and 50% Glycerol.
SIMILARITY	Belongs to the PPP phosphatase family. PP-2B subfamily.
Important Note	This product as supplied is intended for research use only, not for use in human, therapeutic or diagnostic applications.

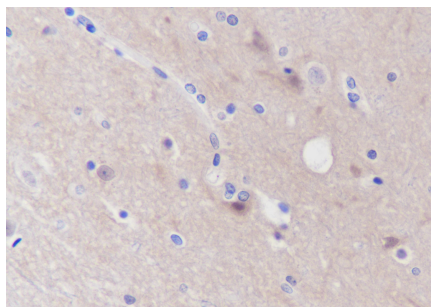
Additional Information

Dilution	WB=1:500-1:1000,IHC-P=1:100-500,IHC-F=1:100-500,IF=0
Format	0.01M TBS(pH7.4) with 1% BSA, 0.09% (W/V) sodium azide and 50% Glyce
Storage	Store at -20 °C for one year. Avoid repeated freeze/thaw cycles. When reconstituted in sterile pH 7.4 0.01M PBS or diluent of antibody the antibody is stable for at least two weeks at 2-4 °C.

Background

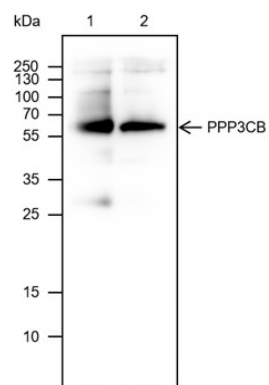
This product as supplied is intended for research use only, not for use in human, therapeutic or diagnostic applications.

Images



Tissue: Human brain Section type: Formalin fixed & Paraffin -embedded section Retrieval method: High temperature and high pressure Retrieval buffer: Tris/EDTA buffer, pH 9.0 Primary Ab dilution: 1:100 Primary Ab incubation condition: 1 hour at room temperature Secondary Ab: SP Kit(Mouse)(sp-0024) Counter stain: Hematoxylin (Blue) Comment: Color brown is the positive signal for AP94662

Blocking buffer: 5% NFDm/TBST Primary Ab dilution:



1:1000 Primary Ab incubation condition: 4°C overnight
Secondary Ab: Goat Anti-Mouse IgG H&L (HRP) Lysate: 1:
Mouse brain, 2: Rat brain Protein loading quantity: 20 µg
Exposure time: 60 s Predicted MW: 59 kDa Observed MW:
59 kDa

Please note: All products are 'FOR RESEARCH USE ONLY. NOT FOR USE IN DIAGNOSTIC OR THERAPEUTIC PROCEDURES'.