

Keratin 16 Recombinant Rabbit mAb

Keratin 16 Recombinant Rabbit mAb

Catalog # AP94659

Product Information

Application	WB, IHC-P, IHC-F, IF, ICC
Host	Rabbit
Clonality	Recombinant

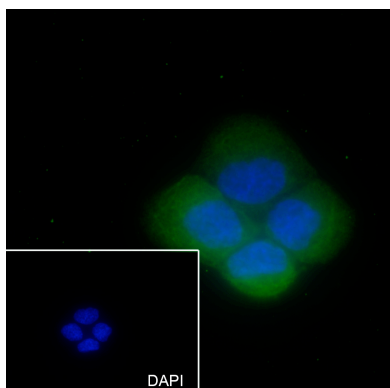
Additional Information

Dilution	WB=1:1000-1:5000,IHC-P=1:100-500,IHC-F=1:100-500,ICC/IF=1:50,IF=0
Format	0.01M TBS(pH7.4) with 1% BSA, 0.09% (W/V) sodium azide and 50% Glyce
Storage	Store at -20 °C for one year. Avoid repeated freeze/thaw cycles. When reconstituted in sterile pH 7.4 0.01M PBS or diluent of antibody the antibody is stable for at least two weeks at 2-4 °C.

Background

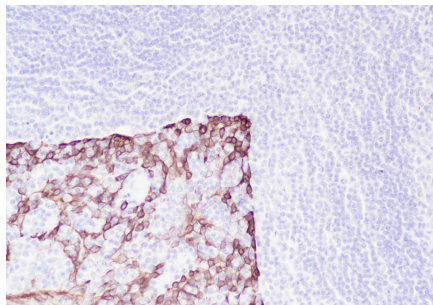
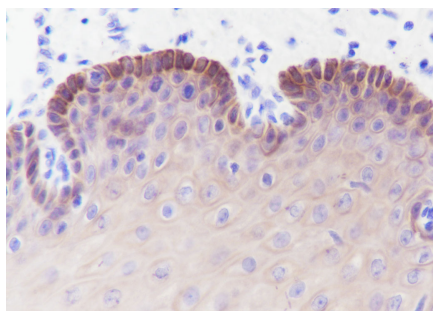
This product as supplied is intended for research use only, not for use in human, therapeutic or diagnostic applications.

Images

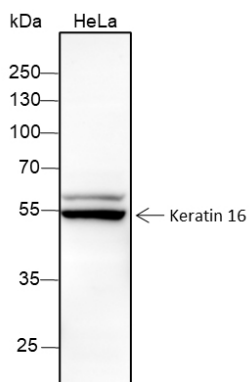


Cell line: A431 Fixative: 4% Paraformaldehyde
Permeabilization: 0.1% TritonX-100 Primary ab dilution:
1:50 Primary incubation condition: 4°C overnight Nuclear
counter stain: DAPI (Blue) Comment: Color green is the
positive signal for AP94659

Tissue: Human esophagus Section type: Formalin fixed &
Paraffin -embedded section Retrieval method: High
temperature and high pressure Retrieval buffer:
Tris/EDTA buffer, pH 9.0 Primary ab dilution: 1:1000
Primary ab incubation condition: 1 hour at room
temperature Counter stain: Hematoxylin Comment: Color
brown is the positive signal for AP94659



Tissue: Human tonsil Section type: Formalin fixed & Paraffin -embedded section Retrieval method: High temperature and high pressure Retrieval buffer: Tris/EDTA buffer, pH 9.0 Primary ab dilution: 1:1000 Primary incubation condition: 1 hour at room temperature Counter stain: Hematoxylin Comment: Color brown is the positive signal for AP94659



Blocking buffer: 5% NFDM/TBST Primary ab dilution: 1:5000 Primary ab incubation condition: 2 hours at room temperature Lysate: HeLa Protein loading quantity: 20 μ g Exposure time: 60 s Predicted MW: 51 kDa Observed MW: 51 kDa

Please note: All products are 'FOR RESEARCH USE ONLY. NOT FOR USE IN DIAGNOSTIC OR THERAPEUTIC PROCEDURES'.