

TROP2 Recombinant Rabbit mAb

TROP2 Recombinant Rabbit mAb

Catalog # AP94658

Product Information

Application	WB, IHC-P, IHC-F, IF
Host	Rabbit
Clonality	Recombinant
Physical State	Liquid
Isotype	IgG
Purity	affinity purified by Protein A
Buffer	0.01M TBS (pH7.4) with 1% BSA, 0.02% Proclin300 and 50% Glycerol.
SUBCELLULAR LOCATION	Membrane; Single-pass type I membrane protein.
SIMILARITY	Belongs to the EPCAM family.Contains 1 thyroglobulin type-1 domain.
Post-translational modifications	The N-terminus is blocked.
DISEASE	Corneal dystrophy, gelatinous drop-like (GDLD) [MIM:204870]: A form of lattice corneal dystrophy, a class of inherited stromal amyloidoses characterized by pathognomonic branching lattice figures in the cornea. GDLD is an autosomal recessive disorder characterized by severe corneal amyloidosis leading to blindness. Clinical manifestations, which appear in the first decade of life, include blurred vision, photophobia, and foreign-body sensation. By the third decade, raised, yellowish-gray, gelatinous masses severely impair visual acuity. Note=The disease is caused by mutations affecting the gene represented in this entry.
Important Note	This product as supplied is intended for research use only, not for use in human, therapeutic or diagnostic applications.
Background Descriptions	This intronless gene encodes a carcinoma-associated antigen. This antigen is a cell surface receptor that transduces calcium signals. Mutations of this gene have been associated with gelatinous drop-like corneal dystrophy.[provided by RefSeq, Dec 2009]

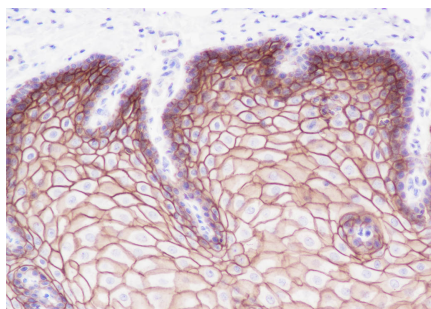
Additional Information

Target/Specificity	Placenta, pancreatic carcinoma cell lines.
Dilution	WB=1:500-1:2000,IHC-P=1:100-500,IHC-F=1:100-500,IF=0
Format	0.01M TBS(pH7.4) with 1% BSA, 0.09% (W/V) sodium azide and 50% Glyce
Storage	Store at -20 °C for one year. Avoid repeated freeze/thaw cycles. When reconstituted in sterile pH 7.4 0.01M PBS or diluent of antibody the antibody is stable for at least two weeks at 2-4 °C.

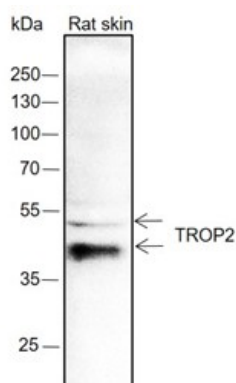
Background

This product as supplied is intended for research use only, not for use in human, therapeutic or diagnostic applications.

Images



Tissue: Human esophagus Section type: Formalin fixed & Paraffin -embedded section Retrieval method: High temperature and high pressure Retrieval buffer: Tris/EDTA buffer, pH 9.0 Primary ab dilution: 1:1000 Primary ab incubation condition: 1 hour at room temperature Counter stain: Hematoxylin Comment: Color brown is the positive signal for AP94658



Blocking buffer: 5% NFDM/TBST Primary ab dilution: 1:2000 Primary ab incubation condition: 2 hours at room temperature Lysate: Rat skin Protein loading quantity: 20 µg Exposure time: 60 s Predicted MW: 36 kDa Observed MW: 37-50 kDa

Please note: All products are 'FOR RESEARCH USE ONLY. NOT FOR USE IN DIAGNOSTIC OR THERAPEUTIC PROCEDURES'.