

Ly6A Recombinant Rabbit mAb

Ly6A Recombinant Rabbit mAb

Catalog # AP94634

Product Information

Application	WB, IHC-P, IHC-F, IF
Host	Rabbit
Clonality	Recombinant
Physical State	Liquid
Isotype	IgG
Purity	affinity purified by Protein A
Buffer	0.01M TBS (pH7.4) with 1% BSA, 0.02% Proclin300 and 50% Glycerol.
SUBCELLULAR LOCATION	Cell membrane; Lipid-anchor, GPI-anchor.
SIMILARITY	Contains 1 UPAR/Ly6 domain.
Post-translational modifications	O-glycosylated. Not N-glycosylated. Not phosphorylated.
Important Note	This product as supplied is intended for research use only, not for use in human, therapeutic or diagnostic applications.
Background Descriptions	Predicted to enable acetylcholine receptor binding activity and acetylcholine receptor inhibitor activity. Acts upstream of or within response to bacterium. Located in external side of plasma membrane. Is expressed in alimentary system; hindlimb tendon; liver; metanephros; and physiological umbilical hernia. Used to study osteoporosis. Orthologous to human LY6H (lymphocyte antigen 6 family member H). [provided by Alliance of Genome Resources, Apr 2022]

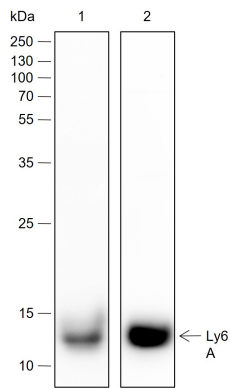
Additional Information

Target/Specificity	Widely expressed.
Dilution	WB=1:500-1:2000,IHC-P=1:100-500,IHC-F=1:100-500,IF=0
Format	0.01M TBS(pH7.4) with 1% BSA, 0.09% (W/V) sodium azide and 50% Glyce
Storage	Store at -20 °C for one year. Avoid repeated freeze/thaw cycles. When reconstituted in sterile pH 7.4 0.01M PBS or diluent of antibody the antibody is stable for at least two weeks at 2-4 °C.

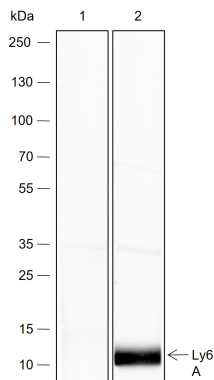
Background

This product as supplied is intended for research use only, not for use in human, therapeutic or diagnostic applications.

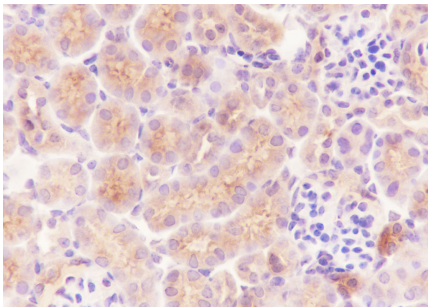
Images



Blocking buffer: 5% NFDM/TBST Primary ab dilution: 1:2000 Primary ab incubation condition: 2 hours at room temperature Secondary ab: Goat Anti-Rabbit IgG H&L (HRP) Lysate: 1: Mouse thymus, 2: C2C12 Protein loading quantity: 20 µg Exposure time: 60 s Predicted MW: 14 kDa Observed MW: 13 kDa



Blocking buffer: 5% NFDM/TBST Primary ab dilution: 1:2000 Primary ab incubation condition: 2 hours at room temperature Secondary ab: Goat Anti-Rabbit IgG H&L (HRP) Lysate: 1: C2C12 cell lysate, the Ly6A Rabbit mAb pre-adsorbed with 3 µM of the synthetic peptides; 2: C2C12 cell lysate, the Ly6A Rabbit mAb with no peptide blocking. Protein loading quantity: 20 µg Exposure time: 10 s Predicted MW: 14 kDa Observed MW: 13 kDa



Tissue: Mouse testis Section type: Formalin fixed & Paraffin -embedded section Retrieval method: High temperature and high pressure Retrieval buffer: Tris/EDTA buffer, pH 9.0 Primary ab dilution: 1:100 Primary ab incubation condition: 1 hour at room temperature Secondary ab: SP Kit(Rabbit) (sp-0023) Counter stain: Hematoxylin (Blue) Comment: Color brown is the positive signal for AP94634

Please note: All products are 'FOR RESEARCH USE ONLY. NOT FOR USE IN DIAGNOSTIC OR THERAPEUTIC PROCEDURES'.