

CAPN1 Rabbit pAb

CAPN1 Rabbit pAb
Catalog # AP94625

Product Information

Application	IHC-P, IHC-F, IF
Reactivity	Mouse
Host	Rabbit
Clonality	Polyclonal
Calculated MW	78 kDa
Physical State	Liquid
Immunogen	KLH conjugated synthetic peptide derived from mouse Calpain 1
Epitope Specificity	625-713/713
Isotype	IgG
Purity	affinity purified by Protein A
Buffer	0.01M TBS (pH7.4) with 1% BSA, 0.02% Proclin300 and 50% Glycerol.
SUBCELLULAR LOCATION	Cytoplasm. Cell membrane. Translocates to the plasma membrane upon Ca(2+) binding.
SIMILARITY	Belongs to the peptidase C2 family. Contains 1 calpain catalytic domain. Contains 4 EF-hand domains.
SUBUNIT	Forms a heterodimer with a small (regulatory) subunit (CAPNS1).
Post-translational modifications	Undergoes calcium-induced successive autoproteolytic cleavages that generate a membrane-bound 78 kDa active form and an intracellular 75 kDa active form. Calpastatin reduces with high efficiency the transition from 78 kDa to 75 kDa calpain forms.
Important Note	This product as supplied is intended for research use only, not for use in human, therapeutic or diagnostic applications.
Background Descriptions	The calpains, calcium-activated neutral proteases, are nonlysosomal, intracellular cysteine proteases. The mammalian calpains include ubiquitous, stomach-specific, and muscle-specific proteins. The ubiquitous enzymes consist of heterodimers with distinct large, catalytic subunits associated with a common small, regulatory subunit. This gene encodes the large subunit of the ubiquitous enzyme, calpain 1. Several transcript variants encoding two different isoforms have been found for this gene. [provided by RefSeq, Nov 2010]

Additional Information

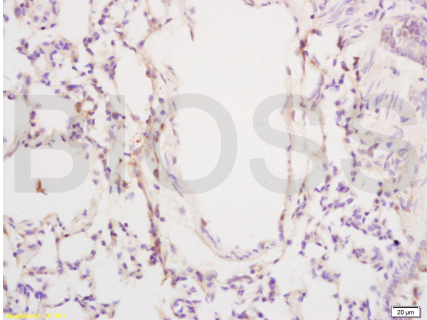
Target/Specificity	Ubiquitous.
Dilution	IHC-P=1:100-500,IHC-F=1:100-500,IF=1:100-500,Flow-Cyt=3ug/Test
Format	0.01M TBS(pH7.4) with 1% BSA, 0.09% (W/V) sodium azide and 50% Glyce
Storage	Store at -20 °C for one year. Avoid repeated freeze/thaw cycles. When reconstituted in sterile pH 7.4 0.01M PBS or diluent of antibody the antibody

is stable for at least two weeks at 2-4 °C.

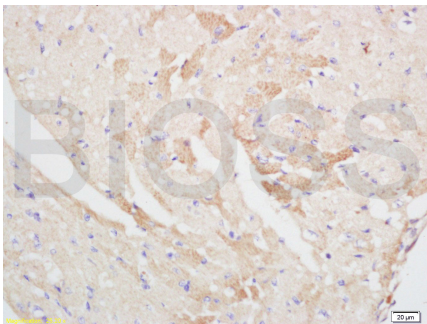
Background

This product as supplied is intended for research use only, not for use in human, therapeutic or diagnostic applications.

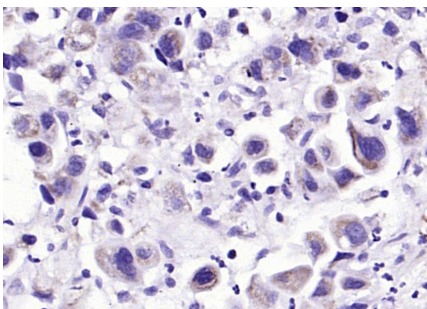
Images



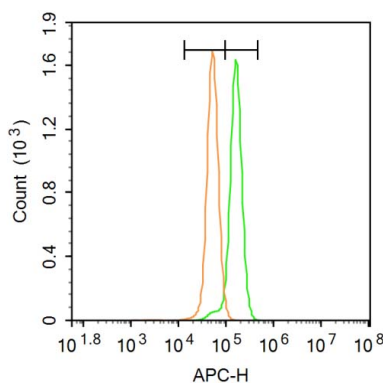
Tissue/cell: rat lung tissue; 4% Paraformaldehyde-fixed and paraffin-embedded; Antigen retrieval: citrate buffer (0.01M, pH 6.0), Boiling bathing for 15min; Block endogenous peroxidase by 3% Hydrogen peroxide for 30min; Blocking buffer (normal goat serum,C-0005) at 37°C for 20 min; Incubation: Anti-Calpain 1 Polyclonal Antibody, Unconjugated(AP94625) 1:200, overnight at 4°C, followed by conjugation to the secondary antibody(SP-0023) and DAB(C-0010) staining



Tissue/cell: mouse heart tissue; 4% Paraformaldehyde-fixed and paraffin-embedded; Antigen retrieval: citrate buffer (0.01M, pH 6.0), Boiling bathing for 15min; Block endogenous peroxidase by 3% Hydrogen peroxide for 30min; Blocking buffer (normal goat serum,C-0005) at 37°C for 20 min; Incubation: Anti-Calpain 1 Polyclonal Antibody, Unconjugated(AP94625) 1:200, overnight at 4°C, followed by conjugation to the secondary antibody(SP-0023) and DAB(C-0010) staining

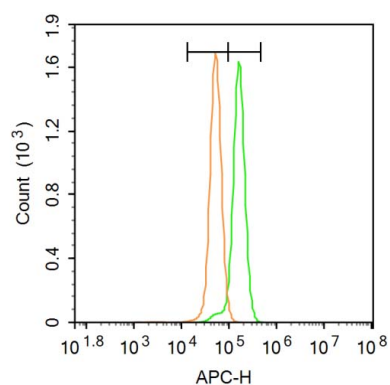


Paraformaldehyde-fixed, paraffin embedded (human gastric carcinoma); Antigen retrieval by boiling in sodium citrate buffer (pH6.0) for 15min; Block endogenous peroxidase by 3% hydrogen peroxide for 20 minutes; Blocking buffer (normal goat serum) at 37°C for 30min; Antibody incubation with (CAPN1) Polyclonal Antibody, Unconjugated (AP94625) at 1:200 overnight at 4°C, followed by operating according to SP Kit(Rabbit) (sp-0023) instructions and DAB staining.



Blank control: A431. Primary Antibody (green line): Rabbit Anti-Calpain 1 antibody (AP94625) Dilution: 1 μg /10⁶ cells; Isotype Control Antibody (orange line): Rabbit IgG . Secondary Antibody: Goat anti-rabbit IgG-AF647 Dilution: 1 μg /test. Protocol The cells were fixed with 4% PFA (10min at room temperature) and then permeabilized with 20% PBST for 20 min at room temperature. The cells were then incubated in 5%BSA to block non-specific protein-protein interactions for 30 min at room temperature. Cells stained with Primary Antibody for 30 min at room temperature. The secondary antibody used for 40 min at room temperature. Acquisition of 20,000 events was performed.

Blank control: A431. Primary Antibody (green line): Rabbit Anti-Calpain 1 antibody (AP94625) Dilution: 1 μg /10⁶



cells; Isotype Control Antibody (orange line): Rabbit IgG .
 Secondary Antibody: Goat anti-rabbit IgG-AF647 Dilution:
 1 µg /test. Protocol The cells were fixed with 4% PFA
 (10min at room temperature)and then permeabilized
 with 0.1% PBST for 20 min at room temperature. The cells
 were then incubated in 5%BSA to block non-specific
 protein-protein interactions for 30 min at room
 temperature .Cells stained with Primary Antibody for 30
 min at room temperature. The secondary antibody used
 for 40 min at room temperature. Acquisition of 20,000
 events was performed.

Please note: All products are 'FOR RESEARCH USE ONLY. NOT FOR USE IN DIAGNOSTIC OR THERAPEUTIC PROCEDURES'.