

LACTB Recombinant Mouse mAb

LACTB Recombinant Mouse mAb

Catalog # AP94614

Product Information

Application	WB, IHC-P, IHC-F, IF, ICC
Host	Rabbit
Clonality	Recombinant
Physical State	Liquid
Isotype	IgG1, Kappa
Purity	affinity purified by Protein G
Buffer	0.01M TBS (pH7.4) with 1% BSA, 0.02% Proclin300 and 50% Glycerol.
SUBCELLULAR LOCATION	Mitochondrion
SIMILARITY	Belongs to the peptidase S12 family.
Important Note	This product as supplied is intended for research use only, not for use in human, therapeutic or diagnostic applications.
Background Descriptions	This gene encodes a mitochondrially-localized protein that has sequence similarity to prokaryotic beta-lactamases. Many of the residues responsible for beta-lactamase activity are not conserved in this protein, suggesting it may have a different enzymatic function. Increased expression of the related mouse gene was found to be associated with obesity. Alternative splicing results in multiple transcript variants encoding different protein isoforms. [provided by RefSeq, Dec 2013]

Additional Information

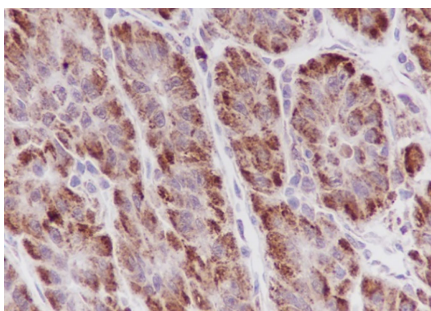
Dilution	WB=1:500-1:1000,IHC-P=1:100-500,IHC-F=1:100-500,ICC/IF=1:50,IF=0
Format	0.01M TBS(pH7.4) with 1% BSA, 0.09% (W/V) sodium azide and 50% Glyce
Storage	Store at -20 °C for one year. Avoid repeated freeze/thaw cycles. When reconstituted in sterile pH 7.4 0.01M PBS or diluent of antibody the antibody is stable for at least two weeks at 2-4 °C.

Background

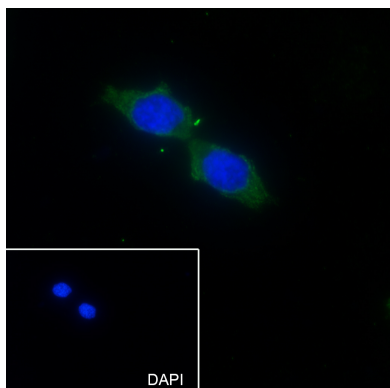
This product as supplied is intended for research use only, not for use in human, therapeutic or diagnostic applications.

Images

Tissue: Human liver cancer Section type: Formalin fixed & Paraffin -embedded section Retrieval method: High temperature and high pressure Retrieval buffer:



Tris/EDTA buffer, pH 9.0 Primary Ab dilution: 1:100
 Primary Ab incubation condition: 1 hour at room temperature Secondary Ab: SP Kit(Mouse)(sp-0024)
 Counter stain: Hematoxylin (Blue) Comment: Color brown is the positive signal for AP94614



Cell line: HepG2 Fixative: 100% Ice-cold methanol
 Permeabilization: 0.1% TritonX-100 Primary ab dilution: 1:50
 Primary incubation condition: 4°C overnight Secondary ab: Goat Anti-Mouse IgG
 Nuclear counter stain: DAPI (Blue) Comment: Color green is the positive signal for AP94614

Please note: All products are 'FOR RESEARCH USE ONLY. NOT FOR USE IN DIAGNOSTIC OR THERAPEUTIC PROCEDURES'.