

OGDH Recombinant Mouse mAb

OGDH Recombinant Mouse mAb

Catalog # AP94606

Product Information

Application	WB, IF, ICC
Host	Rabbit
Clonality	Recombinant
Physical State	Liquid
Isotype	IgG2b/Kappa
Purity	affinity purified by Protein G
Buffer	0.01M TBS (pH7.4) with 1% BSA, 0.02% Proclin300 and 50% Glycerol.
SUBCELLULAR LOCATION	Mitochondrion matrix.
SIMILARITY	Belongs to the alpha-ketoglutarate dehydrogenase family.
Important Note	This product as supplied is intended for research use only, not for use in human, therapeutic or diagnostic applications.
Background Descriptions	This gene encodes one subunit of the 2-oxoglutarate dehydrogenase complex. This complex catalyzes the overall conversion of 2-oxoglutarate (alpha-ketoglutarate) to succinyl-CoA and CO(2) during the Krebs cycle. The protein is located in the mitochondrial matrix and uses thiamine pyrophosphate as a cofactor. A congenital deficiency in 2-oxoglutarate dehydrogenase activity is believed to lead to hypotonia, metabolic acidosis, and hyperlactatemia. Alternative splicing results in multiple transcript variants encoding distinct isoforms.[provided by RefSeq, Sep 2009]

Additional Information

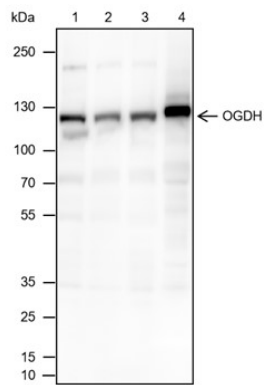
Dilution	WB=1:500-1:1000,ICC/IF=1:20-50
Format	0.01M TBS(pH7.4) with 1% BSA, 0.09% (W/V) sodium azide and 50% Glyce
Storage	Store at -20 °C for one year. Avoid repeated freeze/thaw cycles. When reconstituted in sterile pH 7.4 0.01M PBS or diluent of antibody the antibody is stable for at least two weeks at 2-4 °C.

Background

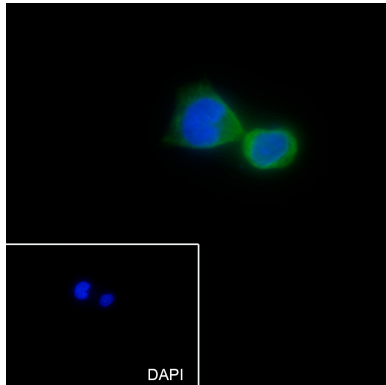
This product as supplied is intended for research use only, not for use in human, therapeutic or diagnostic applications.

Images

Blocking buffer: 5% NFDM/TBST Primary ab dilution:
1:1000 Primary ab incubation condition: room



temperature 2h Secondary ab: Goat Anti-Mouse IgG H&L (HRP) Lysate: 1: Raji, 2: HepG2, 3: MCF-7, 4: Rat heart Protein loading quantity: 20 µg Exposure time: 30 s Predicted MW: 116 kDa Observed MW: 116 kDa



Cell line: HepG2 Fixative: 4% Paraformaldehyde Permeabilization: 0.1% TritonX-100 Primary ab dilution: 1:50 Primary incubation condition: 4°C overnight Secondary ab: Goat Anti-Mouse IgG Nuclear counter stain: DAPI (Blue) Comment: Color green is the positive signal for AP94606

Please note: All products are 'FOR RESEARCH USE ONLY. NOT FOR USE IN DIAGNOSTIC OR THERAPEUTIC PROCEDURES'.