

CENPQ Rabbit pAb

CENPQ Rabbit pAb
Catalog # AP94598

Product Information

Application	IHC-P, IHC-F, IF
Primary Accession	Q9CPQ5
Reactivity	Mouse
Host	Rabbit
Clonality	Polyclonal
Calculated MW	30501
Physical State	Liquid
Immunogen	KLH conjugated synthetic peptide derived from mouse CENPQ
Epitope Specificity	101-200/268
Isotype	IgG
Purity	affinity purified by Protein A
Buffer	0.01M TBS (pH7.4) with 1% BSA, 0.02% Proclin300 and 50% Glycerol.
SUBCELLULAR LOCATION	Nucleus. Chromosome > centromere. Localizes exclusively in the centromeres. The CENPA-CAD complex is probably recruited on centromeres by the CENPA-NAC complex.
Important Note	This product as supplied is intended for research use only, not for use in human, therapeutic or diagnostic applications.
Background Descriptions	CENPQ is a subunit of a CENPH (MIM 605607)-CENPI (MIM 300065)-associated centromeric complex that targets CENPA (MIM 117139) to centromeres and is required for proper kinetochore function and mitotic progression (Okada et al., 2006 [PubMed 16622420]).[supplied by OMIM, Mar 2008]

Additional Information

Gene ID	83815
Other Names	Centromere protein Q, CENP-Q, Cenpq
Dilution	IHC-P=1:100-500,IHC-F=1:100-500,IF=1:100-500
Format	0.01M TBS(pH7.4) with 1% BSA, 0.09% (W/V) sodium azide and 50% Glyce
Storage	Store at -20 °C for one year. Avoid repeated freeze/thaw cycles. When reconstituted in sterile pH 7.4 0.01M PBS or diluent of antibody the antibody is stable for at least two weeks at 2-4 °C.

Protein Information

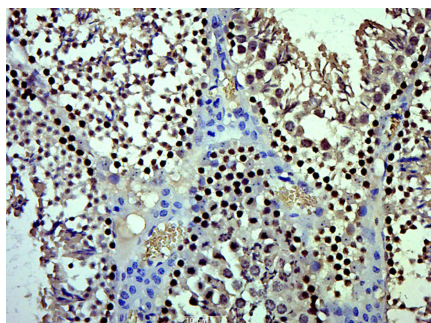
Name	Cenpq
-------------	-------

Function	Component of the CENPA-CAD (nucleosome distal) complex, a complex recruited to centromeres which is involved in assembly of kinetochore proteins, mitotic progression and chromosome segregation. May be involved in incorporation of newly synthesized CENPA into centromeres via its interaction with the CENPA-NAC complex. Plays an important role in chromosome congression and in the recruitment of CENP-O complex (which comprises CENPO, CENPP, CENPQ and CENPU), CENPE and PLK1 to the kinetochores.
Cellular Location	Nucleus {ECO:0000250 UniProtKB:Q7L2Z9}. Chromosome, centromere {ECO:0000250 UniProtKB:Q7L2Z9}. Note=Localizes exclusively in the centromeres. The CENPA-CAD complex is probably recruited on centromeres by the CENPA-NAC complex {ECO:0000250 UniProtKB:Q7L2Z9}

Background

This product as supplied is intended for research use only, not for use in human, therapeutic or diagnostic applications.

Images



Paraformaldehyde-fixed, paraffin embedded (Mouse testis); Antigen retrieval by boiling in sodium citrate buffer (pH6.0) for 15min; Block endogenous peroxidase by 3% hydrogen peroxide for 20 minutes; Blocking buffer (normal goat serum) at 37°C for 30min; Antibody incubation with (CENPQ) Polyclonal Antibody, Unconjugated (AP94598) at 1:500 overnight at 4°C, followed by a conjugated secondary (sp-0023) for 20 minutes and DAB staining.

Please note: All products are 'FOR RESEARCH USE ONLY. NOT FOR USE IN DIAGNOSTIC OR THERAPEUTIC PROCEDURES'.