

# VPS18 Recombinant Mouse mAb

VPS18 Recombinant Mouse mAb

Catalog # AP94583

## Product Information

---

<b>Application</b>	WB, IHC-P, IHC-F, IF, ICC
<b>Host</b>	Rabbit
<b>Clonality</b>	Recombinant
<b>Physical State</b>	Liquid
<b>Isotype</b>	Ig2A/Kappa
<b>Purity</b>	affinity purified by Protein G
<b>Buffer</b>	0.01M TBS (pH7.4) with 1% BSA, 0.02% Proclin300 and 50% Glycerol.
<b>SUBCELLULAR LOCATION</b>	Late endosome membrane; Peripheral membrane protein; Cytoplasmic side. Lysosome membrane; Peripheral membrane protein; Cytoplasmic side. Note=Cytoplasmic, peripheral membrane protein associated with late endosomes/lysosomes.
<b>SIMILARITY</b>	Belongs to the VPS18 family.Contains 1 clathrin repeat.Contains 1 RING-type zinc finger.
<b>SUBUNIT</b>	Interacts with HOOK1. Part of a large heterooligomeric complex together with VPS11, VPS16 and VPS33A. Interacts with STX7.
<b>Important Note</b>	This product as supplied is intended for research use only, not for use in human, therapeutic or diagnostic applications.
<b>Background Descriptions</b>	Vesicle mediated protein sorting plays an important role in segregation of intracellular molecules into distinct organelles. Genetic studies in yeast have identified more than 40 vacuolar protein sorting (VPS) genes involved in vesicle transport to vacuoles. This gene encodes the human homolog of yeast class C Vps18 protein. The mammalian class C Vps proteins are predominantly associated with late endosomes/lysosomes, and like their yeast counterparts, may mediate vesicle trafficking steps in the endosome/lysosome pathway.

## Additional Information

---

<b>Target/Specificity</b>	Ubiquitous. Expression was highest in heart and low in lung.
<b>Dilution</b>	WB=1:500-1:1000,IHC-P=1:100-500,IHC-F=1:100-500,ICC/IF=1:50,IF=0
<b>Format</b>	0.01M TBS(pH7.4) with 1% BSA, 0.09% (W/V) sodium azide and 50% Glyce
<b>Storage</b>	Store at -20 °C for one year. Avoid repeated freeze/thaw cycles. When reconstituted in sterile pH 7.4 0.01M PBS or diluent of antibody the antibody is stable for at least two weeks at 2-4 °C.

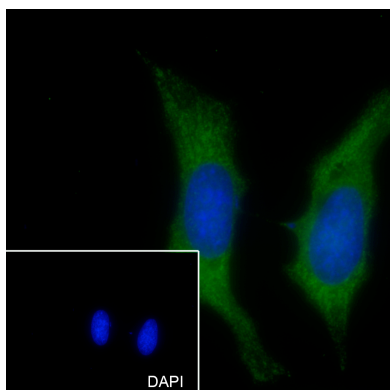
## Background

---

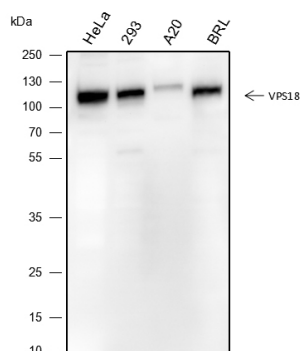
This product as supplied is intended for research use only, not for use in human, therapeutic or diagnostic

applications.

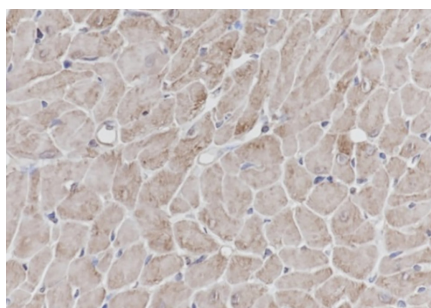
## Images



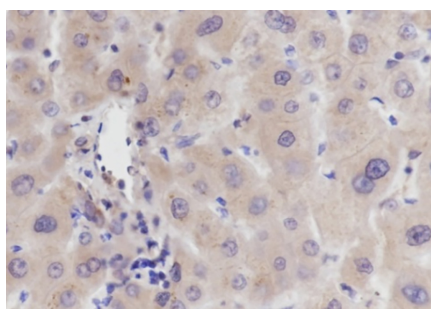
Cell line: HeLa Fixative: 100% Ice-cold methanol  
Permeabilization: 0.1% TritonX-100 Primary ab dilution:  
1:50 Primary incubation condition: 4°C overnight  
Secondary ab: Goat Anti-Mouse IgG Nuclear counter  
stain: DAPI (Blue) Comment: Color green is the positive  
signal for AP94583



Blocking buffer: 5% NFDM/TBST Primary ab dilution:  
1:1000 Primary ab incubation condition: 2 hours at room  
temperature Secondary ab: Goat Anti-Mouse IgG H&L  
(HRP) Lysate: HeLa, 293, A20, BRL Protein loading  
quantity: 20 µg Exposure time: 60 s Predicted MW: 100  
kDa Observed MW: 100 kDa



Tissue: Rat heart Section type: Formalin fixed & Paraffin  
-embedded section Retrieval method: High temperature  
and high pressure Retrieval buffer: Tris/EDTA buffer, pH  
9.0 Primary ab dilution: 1:100 Primary ab incubation  
condition: 1 hour at room temperature Secondary ab: SP  
Kit(Mouse)(sp-0024) Counter stain: Hematoxylin (Blue)  
Comment: Color brown is the positive signal for AP94583



Tissue: Human liver cancer Section type: Formalin fixed &  
Paraffin -embedded section Retrieval method: High  
temperature and high pressure Retrieval buffer:  
Tris/EDTA buffer, pH 9.0 Primary ab dilution: 1:100  
Primary ab incubation condition: 1 hour at room  
temperature Secondary ab: SP Kit(Mouse)(sp-0024)  
Counter stain: Hematoxylin (Blue) Comment: Color brown  
is the positive signal for AP94583

Please note: All products are 'FOR RESEARCH USE ONLY. NOT FOR USE IN DIAGNOSTIC OR THERAPEUTIC PROCEDURES'.