

GOT1 Recombinant Rabbit mAb

GOT1 Recombinant Rabbit mAb

Catalog # AP94582

Product Information

Application	WB, IHC-P, IHC-F, IF
Host	Rabbit
Clonality	Recombinant
Physical State	Liquid
Isotype	IgG
Purity	affinity purified by Protein A
Buffer	0.01M TBS (pH7.4) with 1% BSA, 0.02% Proclin300 and 50% Glycerol.
SUBCELLULAR LOCATION	Cytoplasm.
SIMILARITY	Belongs to the class-I pyridoxal-phosphate-dependent aminotransferase family.
SUBUNIT	Homodimer.
Important Note	This product as supplied is intended for research use only, not for use in human, therapeutic or diagnostic applications.
Background Descriptions	Aspartate Aminotransferase [Glutamate oxaloacetate transaminase] is a ubiquitous pyridoxal phosphate-dependent enzyme which exists in both mitochondrial and cytosolic forms. The enzyme plays an important role in amino acid metabolism and in the urea and tricarboxylic acid cycles. The 2 isoenzymes are homodimeric. In liver about 80% of the enzyme activity is mitochondrial in origin, whereas in serum the enzyme activity is largely cytosolic. Although the mitochondrial and soluble forms of GOT are coded by different chromosomes, the 2 show close homology in amino acid sequence and were presumably derived from a common ancestral gene.

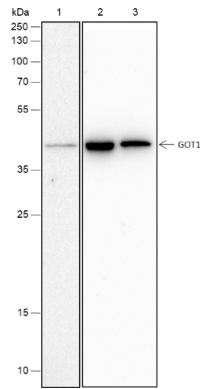
Additional Information

Dilution	WB=1:500-1:1000,IHC-P=1:100-500,IHC-F=,IF=0
Format	0.01M TBS(pH7.4) with 1% BSA, 0.09% (W/V) sodium azide and 50% Glyce
Storage	Store at -20 °C for one year. Avoid repeated freeze/thaw cycles. When reconstituted in sterile pH 7.4 0.01M PBS or diluent of antibody the antibody is stable for at least two weeks at 2-4 °C.

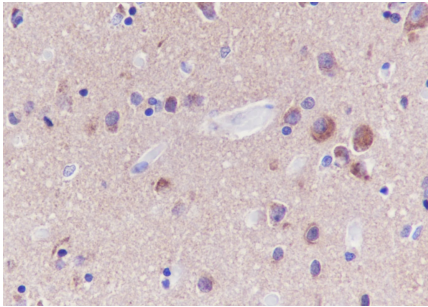
Background

This product as supplied is intended for research use only, not for use in human, therapeutic or diagnostic applications.

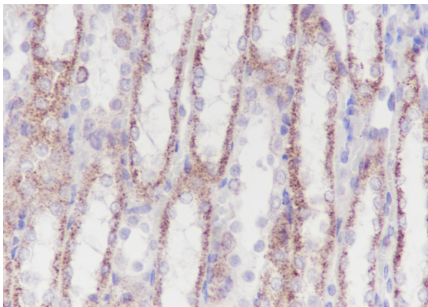
Images



Blocking buffer: 5% NFDM/TBST Primary ab dilution: 1:1000 Primary ab incubation condition: 2 hours at room temperature Secondary ab: Goat Anti-Rabbit IgG H&L (HRP) Lysate: 1: HeLa, 2: Mouse heart, 3: Rat heart Protein loading quantity: 20 µg Exposure time: 60 s Predicted MW: 46 kDa Observed MW: 46 kDa



Tissue: Human cerebrum Section type: Formalin fixed & Paraffin -embedded section Retrieval method: High temperature and high pressure Retrieval buffer: Tris/EDTA buffer, pH 9.0 Primary ab dilution: 1:1000 Primary ab incubation condition: 1 hour at room temperature Secondary ab: SP Kit(Rabbit) (sp-0023) Counter stain: Hematoxylin (Blue) Comment: Color brown is the positive signal for AP94582



Tissue: Rat kidney Section type: Formalin fixed & Paraffin -embedded section Retrieval method: High temperature and high pressure Retrieval buffer: Tris/EDTA buffer, pH 9.0 Primary ab dilution: 1:100 Primary ab incubation condition: 1 hour at room temperature Secondary ab: SP Kit(Rabbit) (sp-0023) Counter stain: Hematoxylin (Blue) Comment: Color brown is the positive signal for AP94582

Please note: All products are 'FOR RESEARCH USE ONLY. NOT FOR USE IN DIAGNOSTIC OR THERAPEUTIC PROCEDURES'.