

# SF1 Recombinant Rabbit mAb

SF1 Recombinant Rabbit mAb

Catalog # AP94580

## Product Information

---

<b>Application</b>	WB, IHC-P, IHC-F, IF, ICC
<b>Host</b>	Rabbit
<b>Clonality</b>	Recombinant
<b>Physical State</b>	Liquid
<b>Isotype</b>	IgG
<b>Purity</b>	affinity purified by Protein A
<b>Buffer</b>	0.01M TBS (pH7.4) with 1% BSA, 0.02% Proclin300 and 50% Glycerol.
<b>SUBCELLULAR LOCATION</b>	Nuclear
<b>SIMILARITY</b>	Belongs to the BBP/SF1 family. Contains 1 CCHC-type zinc finger. Contains 1 KH domain.
<b>Post-translational modifications</b>	Phosphorylation on Ser-20 interferes with U2AF2 binding and spliceosome assembly. Isoform 6 is phosphorylated on Ser-463.
<b>Important Note</b>	This product as supplied is intended for research use only, not for use in human, therapeutic or diagnostic applications.
<b>Background Descriptions</b>	This gene encodes a nuclear pre-mRNA splicing factor. The encoded protein specifically recognizes the intron branch point sequence and is required for the early stages of spliceosome assembly. Alternate splicing results in multiple transcript variants. [provided by RefSeq, May 2010]

## Additional Information

---

<b>Target/Specificity</b>	Detected in lung, ovary, adrenal gland, colon, kidney, muscle, pancreas, thyroid, placenta, brain, liver and heart.
<b>Dilution</b>	WB=1:500-1:2000,IHC-P=1:100-500,IHC-F=,ICC/IF=1:20-1:100,IF=0,Flow-Cyt=1:20-1:100
<b>Format</b>	0.01M TBS(pH7.4) with 1% BSA, 0.09% (W/V) sodium azide and 50% Glyce
<b>Storage</b>	Store at -20 °C for one year. Avoid repeated freeze/thaw cycles. When reconstituted in sterile pH 7.4 0.01M PBS or diluent of antibody the antibody is stable for at least two weeks at 2-4 °C.

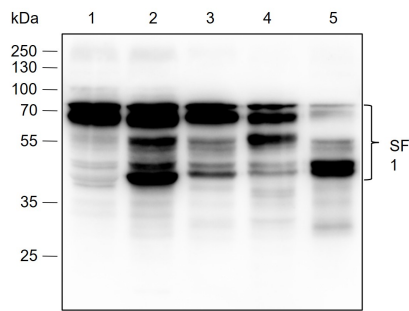
## Background

---

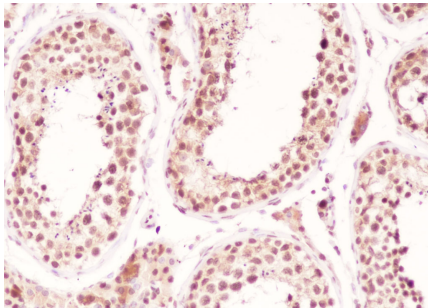
This product as supplied is intended for research use only, not for use in human, therapeutic or diagnostic applications.

## Images

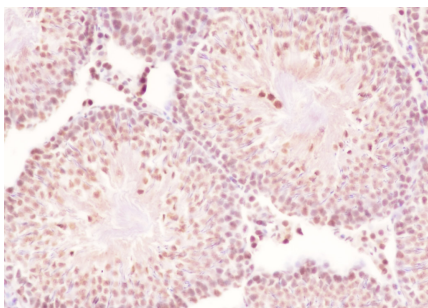
---



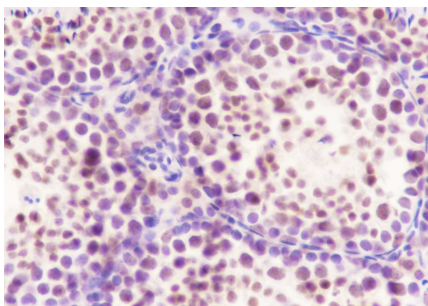
Blocking buffer: 5% NFDM/TBST Primary ab dilution: 1:2000 Primary ab incubation condition: 2 hours at room temperature Secondary ab: Goat Anti-Rabbit IgG H&L (HRP) Lysate: 1: HeLa, 2: HepG2, 3: PC-12, 4: NIH-3T3, 5: Mouse testis Protein loading quantity: 20 µg Exposure time: 60 s Predicted MW: 52 kDa Observed MW: 50-75 kDa



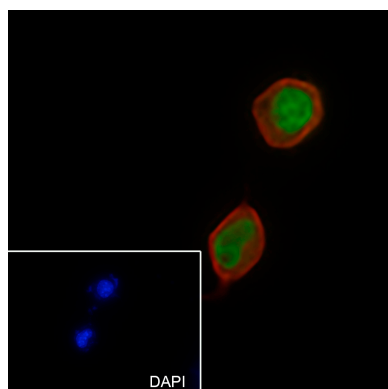
Tissue: Human testis Section type: Formalin fixed & Paraffin -embedded section Retrieval method: High temperature and high pressure Retrieval buffer: Tris/EDTA buffer, pH 9.0 Primary ab dilution: 1:1000 Primary ab incubation condition: 1 hour at room temperature Secondary ab: SP Kit(Rabbit) (sp-0023) Counter stain: Hematoxylin (Blue) Comment: Color brown is the positive signal for AP94580



Tissue: Rat testis Section type: Formalin fixed & Paraffin -embedded section Retrieval method: High temperature and high pressure Retrieval buffer: Tris/EDTA buffer, pH 9.0 Primary ab dilution: 1:1000 Primary ab incubation condition: 1 hour at room temperature Secondary ab: SP Kit(Rabbit) (sp-0023) Counter stain: Hematoxylin (Blue) Comment: Color brown is the positive signal for AP94580

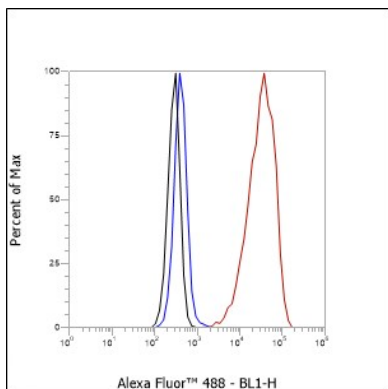


Tissue: Mouse testis Section type: Formalin fixed & Paraffin -embedded section Retrieval method: High temperature and high pressure Retrieval buffer: Tris/EDTA buffer, pH 9.0 Primary ab dilution: 1:1000 Primary ab incubation condition: 1 hour at room temperature Secondary ab: SP Kit(Rabbit) (sp-0023) Counter stain: Hematoxylin (Blue) Comment: Color brown is the positive signal for AP94580

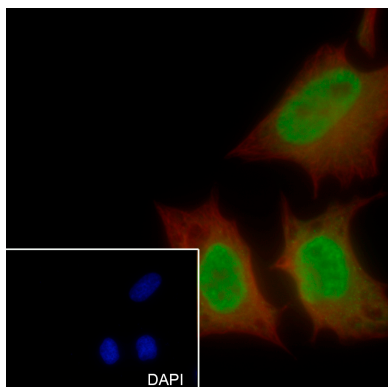


Cell line: Neuro-2a Fixative: 4% Paraformaldehyde Permeabilization: 0.1% TritonX-100 Primary ab dilution: 1:50 Primary incubation condition: 4°C overnight Secondary ab: Goat Anti-Rabbit IgG Nuclear counter stain: DAPI (Blue) Counter stain: Tubulin (Red) Comment: Color green is the positive signal for AP94580

Cell line: HeLa Fixative: 4% Paraformaldehyde Permeabilization: 90% Methanol Primary ab dilution: 1:100 Secondary ab: Goat anti Rabbit IgG Unlabelled control: The cell without incubation with primary antibody and secondary antibody (Black line). Isotype



control: Rabbit monoclonal IgG (Blue line). Comment:  
Line red is the positive signal for AP94580



Cell line: HeLa Fixative: 4% Paraformaldehyde  
Permeabilization: 0.1% TritonX-100 Primary ab dilution:  
1:50 Primary incubation condition: 4°C overnight  
Secondary ab: Goat Anti-Rabbit IgG Nuclear counter  
stain: DAPI (Blue) Counter stain: Tubulin (Red) Comment:  
Color green is the positive signal for AP94580

Please note: All products are 'FOR RESEARCH USE ONLY. NOT FOR USE IN DIAGNOSTIC OR THERAPEUTIC PROCEDURES'.