

BCLG Recombinant Mouse mAb

BCLG Recombinant Mouse mAb

Catalog # AP94572

Product Information

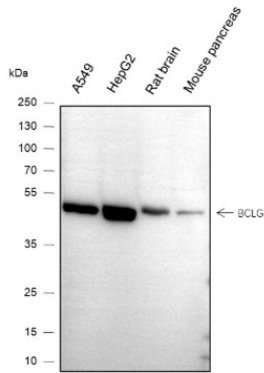
Application	WB, IHC-P, IHC-F, IF, ICC
Host	Rabbit
Clonality	Recombinant
Physical State	Liquid
Isotype	IgG/Kappa
Purity	affinity purified by Protein G
Buffer	0.01M TBS (pH7.4) with 1% BSA, 0.02% Proclin300 and 50% Glycerol.
SUBCELLULAR LOCATION	Cytoplasm. Isoform 1: Cytoplasm, cytosol. Note=Diffusely distributed throughout the cytosol. Isoform 2: Endomembrane system. Note=Predominantly localized to cytosolic organelles.
SIMILARITY	Belongs to the Bcl-2 family.
Post-translational modifications	Phosphorylated by MELK, leading to inhibit its pro-apoptotic function.
Important Note	This product as supplied is intended for research use only, not for use in human, therapeutic or diagnostic applications.
Background Descriptions	Bcl-G is a novel pro-apoptotic member of the Bcl-2 family. The human Bcl-G gene encodes two proteins through alternative mRNA splicing, Bcl-G(L) (long) and Bcl-G(S) (short) consisting of 327 and 252 amino acids in length, respectively. Bcl-G(L) mRNA is expressed widely in adult human tissues, whereas Bcl-G(S) mRNA was found only in testis. Overexpression of Bcl-G(L) or Bcl-G(S) in cells induced apoptosis although Bcl-G(S) was far more potent than Bcl-G(L).

Additional Information

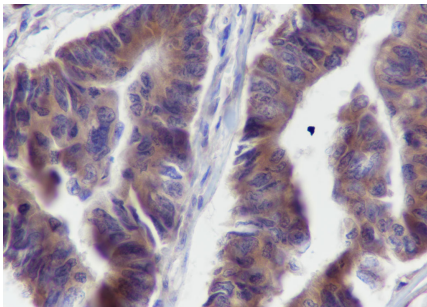
Target/Specificity	Isoform 1 is widely expressed. Isoform 2 is testis-specific.
Dilution	WB=1:1000-1:5000,IHC-P=1:100-500,IHC-F=1:100-500,ICC/IF=1:50,IF=0
Format	0.01M TBS(pH7.4) with 1% BSA, 0.09% (W/V) sodium azide and 50% Glyce
Storage	Store at -20 °C for one year. Avoid repeated freeze/thaw cycles. When reconstituted in sterile pH 7.4 0.01M PBS or diluent of antibody the antibody is stable for at least two weeks at 2-4 °C.

Background

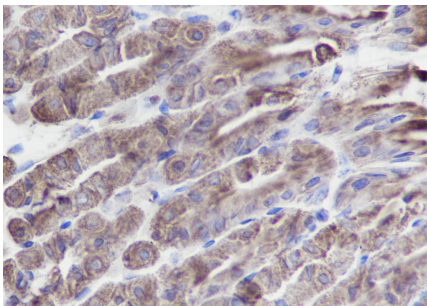
This product as supplied is intended for research use only, not for use in human, therapeutic or diagnostic applications.



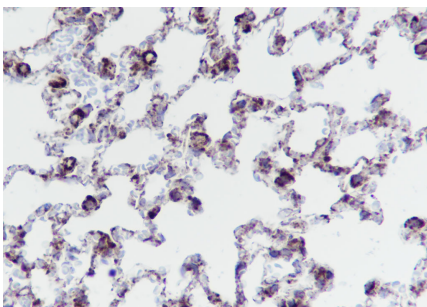
Blocking buffer: 5% NFDM/TBST Primary ab dilution: 1:5000 Primary ab incubation condition: 4°C overnight Secondary ab: Goat Anti-Mouse IgG H&L (HRP) Lysate: A549, HepG2, Rat brain, Mouse pancreas Protein loading quantity: 20 µg Exposure time: 60 s Predicted MW: 37 kDa Observed MW: 52 kDa



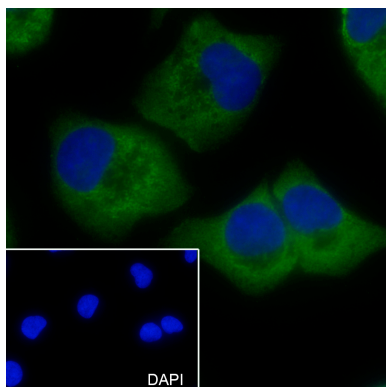
Tissue: Human colon cancer Section type: Formalin fixed & Paraffin -embedded section Retrieval method: High temperature and high pressure Retrieval buffer: Tris/EDTA buffer, pH 9.0 Primary ab dilution: 1:100 Primary ab incubation condition: 1 hour at room temperature Secondary ab: SP Kit(Mouse)(sp-0024) Counter stain: Hematoxylin (Blue) Comment: Color brown is the positive signal for AP94572



Tissue: Mouse stomach Section type: Formalin fixed & Paraffin -embedded section Retrieval method: High temperature and high pressure Retrieval buffer: Tris/EDTA buffer, pH 9.0 Primary ab dilution: 1:100 Primary ab incubation condition: 1 hour at room temperature Secondary ab: SP Kit(Mouse)(sp-0024) Counter stain: Hematoxylin (Blue) Comment: Color brown is the positive signal for AP94572



Tissue: Rat lung Section type: Formalin fixed & Paraffin -embedded section Retrieval method: High temperature and high pressure Retrieval buffer: Tris/EDTA buffer, pH 9.0 Primary ab dilution: 1:100 Primary ab incubation condition: 1 hour at room temperature Secondary ab: SP Kit(Mouse)(sp-0024) Counter stain: Hematoxylin (Blue) Comment: Color brown is the positive signal for AP94572



Cell line: A549 Fixative: 100% Ice-cold methanol Permeabilization: 0.1% TritonX-100 Primary ab dilution: 1:50 Primary incubation condition: 4°C overnight Secondary ab: Goat Anti-Mouse IgG Nuclear counter stain: DAPI (Blue) Comment: Color green is the positive signal for AP94572

Please note: All products are 'FOR RESEARCH USE ONLY. NOT FOR USE IN DIAGNOSTIC OR THERAPEUTIC PROCEDURES'.