

# EEF1A1 Recombinant Mouse mAb

EEF1A1 Recombinant Mouse mAb

Catalog # AP94568

## Product Information

---

<b>Application</b>	WB, IHC-P, IHC-F, IF, ICC
<b>Host</b>	Rabbit
<b>Clonality</b>	Recombinant
<b>Physical State</b>	Liquid
<b>Isotype</b>	IgG1, Kappa
<b>Purity</b>	affinity purified by Protein G
<b>Buffer</b>	0.01M TBS (pH7.4) with 1% BSA, 0.02% Proclin300 and 50% Glycerol.
<b>SUBCELLULAR LOCATION</b>	Cytoplasm.
<b>SIMILARITY</b>	Belongs to the GTP-binding elongation factor family. EF-Tu/EF-1A subfamily.
<b>Post-translational modifications</b>	ISGylated.
<b>Important Note</b>	This product as supplied is intended for research use only, not for use in human, therapeutic or diagnostic applications.
<b>Background Descriptions</b>	This gene encodes an isoform of the alpha subunit of the elongation factor-1 complex, which is responsible for the enzymatic delivery of aminoacyl tRNAs to the ribosome. This isoform (alpha 1) is expressed in brain, placenta, lung, liver, kidney, and pancreas, and the other isoform (alpha 2) is expressed in brain, heart and skeletal muscle. This isoform is identified as an autoantigen in 66% of patients with Felty syndrome. This gene has been found to have multiple copies on many chromosomes, some of which, if not all, represent different pseudogenes. [provided by RefSeq, Jul 2008]

## Additional Information

---

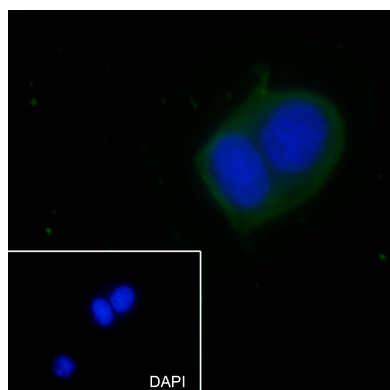
<b>Target/Specificity</b>	Brain, placenta, lung, liver, kidney, pancreas but barely detectable in heart and skeletal muscle
<b>Dilution</b>	WB=1:500-1:1000,IHC-P=1:100-500,IHC-F=1:100-500,ICC/IF=1:50,IF=0
<b>Format</b>	0.01M TBS(pH7.4) with 1% BSA, 0.09% (W/V) sodium azide and 50% Glyce
<b>Storage</b>	Store at -20 °C for one year. Avoid repeated freeze/thaw cycles. When reconstituted in sterile pH 7.4 0.01M PBS or diluent of antibody the antibody is stable for at least two weeks at 2-4 °C.

## Background

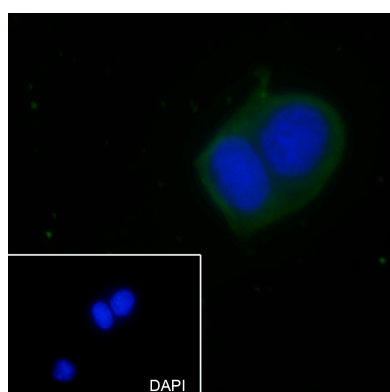
---

This product as supplied is intended for research use only, not for use in human, therapeutic or diagnostic applications.

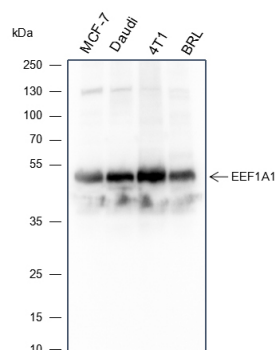
## Images



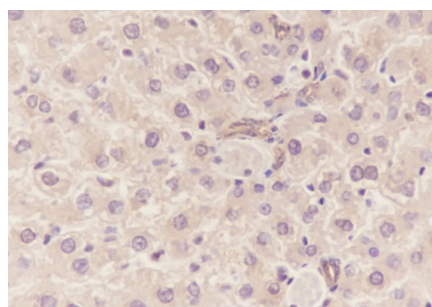
Cell line: MCF7 Fixative: 100% Ice-cold methanol  
Permeabilization: 0.1% TritonX-100 Primary ab dilution:  
1:50 Primary incubation condition: 4°C overnight  
Secondary ab: Goat Anti-Mouse IgG Nuclear counter  
stain: DAPI (Blue) Comment: Color green is the positive  
signal for AP94568



Blocking buffer: 5% NFDM/TBST Primary ab dilution:  
1:1000 Primary ab incubation condition: 2 hours at room  
temperature Secondary ab: Goat Anti-Mouse IgG H&L  
(HRP) Lysate: MCF-7, Daudi, 4T1, BRL Protein loading  
quantity: 20 µg Exposure time: 1 s Predicted MW: 50 kDa  
Observed MW: 50 kDa

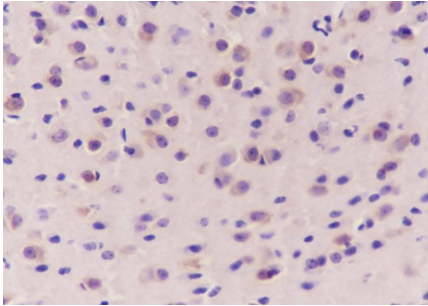
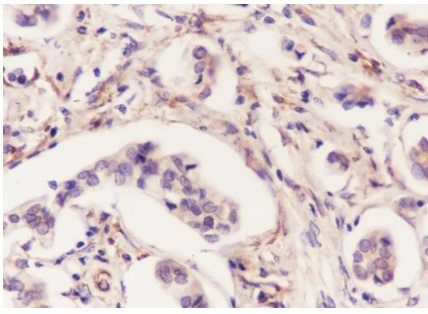


Blocking buffer: 5% NFDM/TBST Primary ab dilution:  
1:1000 Primary ab incubation condition: 2 hours at room  
temperature Secondary ab: Goat Anti-Mouse IgG H&L  
(HRP) Lysate: MCF-7, Daudi, 4T1, BRL Protein loading  
quantity: 20 µg Exposure time: 1 s Predicted MW: 50 kDa  
Observed MW: 50 kDa



Tissue: Rat liver Section type: Formalin fixed & Paraffin  
-embedded section Retrieval method: High temperature  
and high pressure Retrieval buffer: Tris/EDTA buffer, pH  
9.0 Primary ab dilution: 1:100 Primary ab incubation  
condition: 1 hour at room temperature Secondary ab: SP  
Kit(Mouse)(sp-0024) Counter stain: Hematoxylin (Blue)  
Comment: Color brown is the positive signal for AP94568

Tissue: Human breast cancer Section type: Formalin fixed  
& Paraffin -embedded section Retrieval method: High  
temperature and high pressure Retrieval buffer:  
Tris/EDTA buffer, pH 9.0 Primary ab dilution: 1:100  
Primary ab incubation condition: 1 hour at room  
temperature Secondary ab: SP Kit(Mouse)(sp-0024)  
Counter stain: Hematoxylin (Blue) Comment: Color brown  
is the positive signal for AP94568



Tissue: Mouse brain Section type: Formalin fixed & Paraffin -embedded section Retrieval method: High temperature and high pressure Retrieval buffer: Tris/EDTA buffer, pH 9.0 Primary ab dilution: 1:100 Primary ab incubation condition: 1 hour at room temperature Secondary ab: SP Kit(Mouse)(sp-0024) Counter stain: Hematoxylin (Blue) Comment: Color brown is the positive signal for AP94568

Please note: All products are 'FOR RESEARCH USE ONLY. NOT FOR USE IN DIAGNOSTIC OR THERAPEUTIC PROCEDURES'.