

# ALDH6A1 Mouse mAb

ALDH6A1 Mouse mAb

Catalog # AP94563

## Product Information

<b>Application</b>	WB, IHC-P, IHC-F, IF, ICC
<b>Reactivity</b>	Human
<b>Host</b>	Rabbit
<b>Clonality</b>	Monoclonal

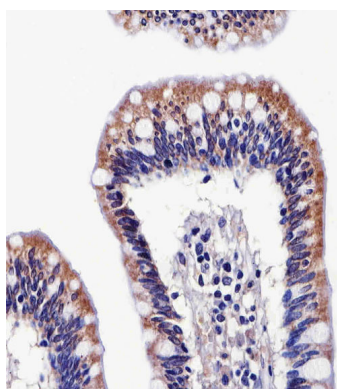
## Additional Information

<b>Dilution</b>	WB=1:500-1000,IHC-P=1:25,IHC-F=1:400-800,ICC/IF=1:25,IF=1:25
<b>Format</b>	0.01M TBS(pH7.4) with 1% BSA, 0.09% (W/V) sodium azide and 50% Glyce
<b>Storage</b>	Store at -20 °C for one year. Avoid repeated freeze/thaw cycles. When reconstituted in sterile pH 7.4 0.01M PBS or diluent of antibody the antibody is stable for at least two weeks at 2-4 °C.

## Background

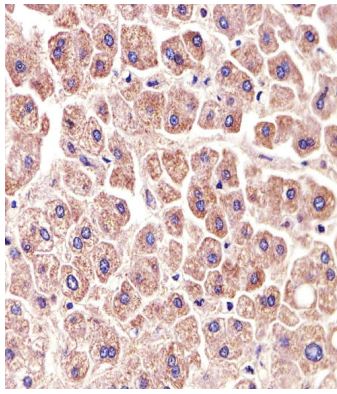
This product as supplied is intended for research use only, not for use in human, therapeutic or diagnostic applications.

## Images

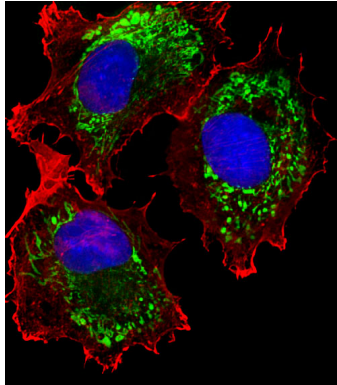


Paraformaldehyde-fixed, paraffin embedded ( human colon section); Antigen retrieval by boiling in sodium citrate buffer (pH6.0) for 15min; Block endogenous peroxidase by 3% hydrogen peroxide for 20 minutes; Blocking buffer (normal goat serum) at 37°C for 30min; Antibody incubation with (ALDH6A1) Monoclonal Antibody, Unconjugated (AP94563) at 1:200 overnight at 4°C, followed by operating according to SP Kit(Mouse)(sp-0024) instructionsand DAB staining.

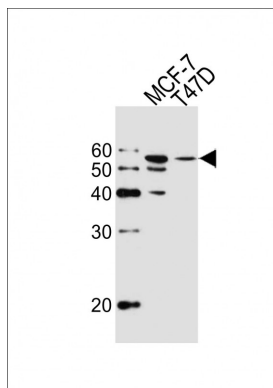
Paraformaldehyde-fixed, paraffin embedded ( human LIVER section); Antigen retrieval by boiling in sodium citrate buffer (pH6.0) for 15min; Block endogenous peroxidase by 3% hydrogen peroxide for 20 minutes; Blocking buffer (normal goat serum) at 37°C for 30min; Antibody incubation with (ALDH6A1) Monoclonal



Antibody, Unconjugated (AP94563) at 1:200 overnight at 4°C, followed by operating according to SP Kit(Mouse)(sp-0024) instructions and DAB staining.



MCF7 cell; 4% Paraformaldehyde-fixed; Triton X-100 at room temperature for 20 min; Blocking buffer (normal goat serum, C-0005) at 37°C for 20 min; Antibody incubation with (ALDH6A1) monoclonal Antibody, Unconjugated (AP94563) 1:25, 90 minutes at 37°C; followed by a conjugated Goat Anti-Mouse IgG antibody at 37°C for 90 minutes, DAPI (blue, C02-04002) was used to stain the cell nuclei. Alexa Fluor® 555 conjugated with Phalloidin (red) was used to stain the cell Cytoplasmic actin.



Sample: Lane 1: MCF-7 cell lysates Lane 2: T47D cell lysates Primary: Anti-ALDH6A1 (AP94563) at 1:1000 dilution Secondary: IRDye800CW Goat Anti-Mouse IgG at 1/20000 dilution Predicted band size: 59 kD Observed band size: 56 kD

Please note: All products are 'FOR RESEARCH USE ONLY. NOT FOR USE IN DIAGNOSTIC OR THERAPEUTIC PROCEDURES'.