

# ELP3 Recombinant Rabbit mAb

ELP3 Recombinant Rabbit mAb

Catalog # AP94549

## Product Information

---

<b>Application</b>	WB, IHC-P, IHC-F, IF, ICC
<b>Host</b>	Rabbit
<b>Clonality</b>	Recombinant
<b>Calculated MW</b>	62 KDa
<b>Physical State</b>	Liquid
<b>Isotype</b>	IgG/Kappa
<b>Purity</b>	affinity purified by Protein A
<b>Buffer</b>	0.01M TBS (pH7.4) with 1% BSA, 0.02% Proclin300 and 50% Glycerol.
<b>SUBCELLULAR LOCATION</b>	Cytoplasm. Nucleus.
<b>SIMILARITY</b>	Belongs to the ELP3 family. Contains 1 N-acetyltransferase domain.
<b>Important Note</b>	This product as supplied is intended for research use only, not for use in human, therapeutic or diagnostic applications.
<b>Background Descriptions</b>	ELP3 is the catalytic subunit of the histone acetyltransferase elongator complex, which contributes to transcript elongation and also regulates the maturation of projection neurons (Creppe et al., 2009 [PubMed 19185337]).[supplied by OMIM, Apr 2009]

## Additional Information

---

<b>Dilution</b>	WB=1:500-1:1000,IHC-P=1:50-1:100,IHC-F=,ICC/IF=1:50,IF=0
<b>Format</b>	0.01M TBS(pH7.4) with 1% BSA, 0.09% (W/V) sodium azide and 50% Glyce
<b>Storage</b>	Store at -20 °C for one year. Avoid repeated freeze/thaw cycles. When reconstituted in sterile pH 7.4 0.01M PBS or diluent of antibody the antibody is stable for at least two weeks at 2-4 °C.

## Background

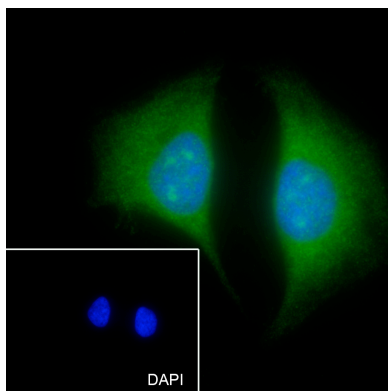
---

This product as supplied is intended for research use only, not for use in human, therapeutic or diagnostic applications.

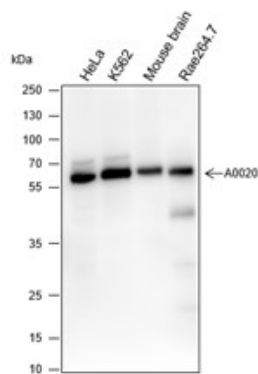
## Images

---

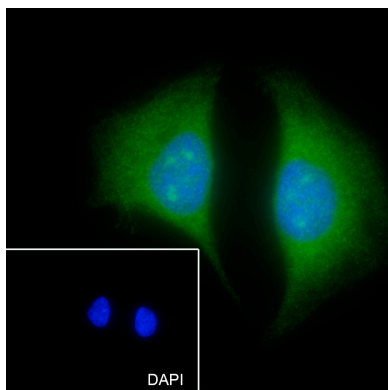
Cell line: HeLa Fixative: 100% Ice-cold methanol  
Permeabilization: 0.1% TritonX-100 Primary ab dilution:  
1:50 Primary incubation condition: 4°C overnight  
Secondary ab: Goat Anti-Rabbit IgG Nuclear counter  
stain: DAPI (Blue) Comment: Color green is the positive



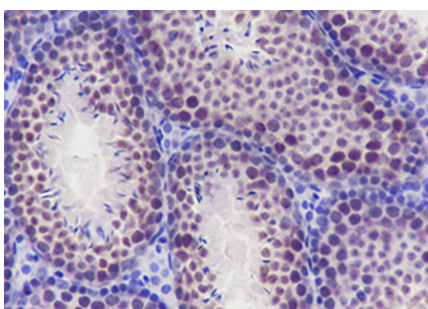
signal for AP94549



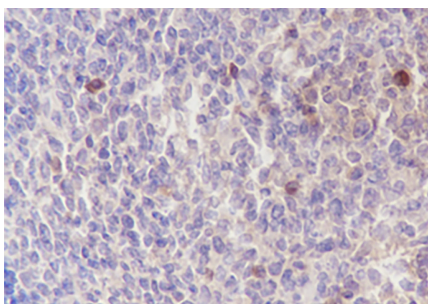
Blocking buffer: 5% NFDM/TBST Primary ab dilution: 1:1000 Primary ab incubation condition: 2 hours at room temperature Secondary ab: Goat Anti-Rabbit IgG H&L (HRP) Lysate: HeLa, K562, Mouse brain, Raw264.7 Protein loading quantity: 20  $\mu$ g Exposure time: 60 s Predicted MW: 62 kDa Observed MW: 62 kDa



1



Tissue: Mouse testis Section type: Formalin fixed & Paraffin -embedded section Retrieval method: High temperature and high pressure Retrieval buffer: Tris/EDTA buffer, pH 9.0 Primary ab dilution: 1:100 Primary ab incubation condition: 1 hour at room temperature Secondary ab: SP Kit(Rabbit) (sp-0023) Counter stain: Hematoxylin (Blue) Comment: Color brown is the positive signal for AP94549



Tissue: Human tonsil Section type: Formalin fixed & Paraffin -embedded section Retrieval method: High temperature and high pressure Retrieval buffer: Tris/EDTA buffer, pH 9.0 Primary ab dilution: 1:100 Primary ab incubation condition: 1 hour at room temperature Secondary ab: SP Kit(Rabbit) (sp-0023) Counter stain: Hematoxylin (Blue) Comment: Color brown is the positive signal for AP94549

Please note: All products are 'FOR RESEARCH USE ONLY. NOT FOR USE IN DIAGNOSTIC OR THERAPEUTIC PROCEDURES'.