

# Keratin 15 Recombinant Rabbit mAb

Keratin 15 Recombinant Rabbit mAb

Catalog # AP94539

## Product Information

---

<b>Application</b>	WB, IHC-P, IHC-F, IF, ICC
<b>Host</b>	Rabbit
<b>Clonality</b>	Recombinant
<b>Physical State</b>	Liquid
<b>Isotype</b>	IgG
<b>Purity</b>	affinity purified by Protein A
<b>Buffer</b>	0.01M TBS (pH7.4) with 1% BSA, 0.02% Proclin300 and 50% Glycerol.
<b>SUBCELLULAR LOCATION</b>	Expressed in a discontinuous manner in the basal cell layer of adult skin epidermis, but continuously in the basal layer of fetal skin epidermis and nail. Also expressed in the outer root sheath above the hair bulb in hair follicle (at protein level). Expressed homogeneously in all cell layers of the esophagus and exocervix, but detected in the basal cell layer only of oral mucosa, skin and in the basal plus the next two layers of the suprabasal epithelium of the palate.
<b>SIMILARITY</b>	Belongs to the intermediate filament family.
<b>SUBUNIT</b>	Heterotetramer of two type I and two type II keratins.
<b>Important Note</b>	This product as supplied is intended for research use only, not for use in human, therapeutic or diagnostic applications.
<b>Background Descriptions</b>	The protein encoded by this gene is a member of the keratin gene family. The keratins are intermediate filament proteins responsible for the structural integrity of epithelial cells and are subdivided into cytokeratins and hair keratins. Most of the type I cytokeratins consist of acidic proteins which are arranged in pairs of heterotypic keratin chains and are clustered in a region on chromosome 17q21.2. [provided by RefSeq].

## Additional Information

---

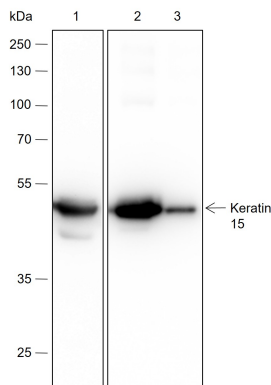
<b>Target/Specificity</b>	Expressed in a discontinuous manner in the basal cell layer of adult skin epidermis, but continuously in the basal layer of fetal skin epidermis and nail. Also expressed in the outer root sheath above the hair bulb in hair follicle (at protein level). Expressed homogeneously in all cell layers of the esophagus and exocervix, but detected in the basal cell layer only of oral mucosa, skin and in the basal plus the next two layers of the suprabasal epithelium of the palate.
<b>Dilution</b>	WB=1:200-1000,IHC-P=1:100-500,IHC-F=1:100-500,ICC/IF=1:20-50,IF=0,Flow-Cyt=1:20-100
<b>Format</b>	0.01M TBS(pH7.4) with 1% BSA, 0.09% (W/V) sodium azide and 50% Glyce
<b>Storage</b>	Store at -20 °C for one year. Avoid repeated freeze/thaw cycles. When

reconstituted in sterile pH 7.4 0.01M PBS or diluent of antibody the antibody is stable for at least two weeks at 2-4 °C.

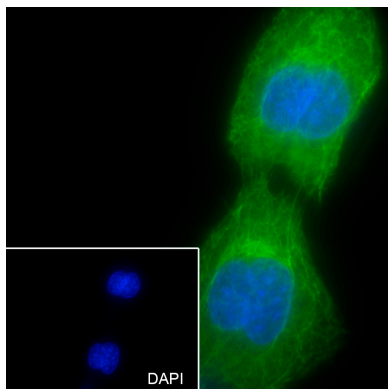
## Background

This product as supplied is intended for research use only, not for use in human, therapeutic or diagnostic applications.

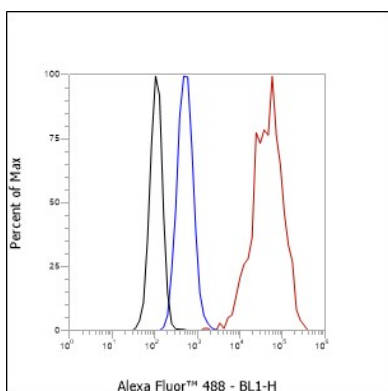
## Images



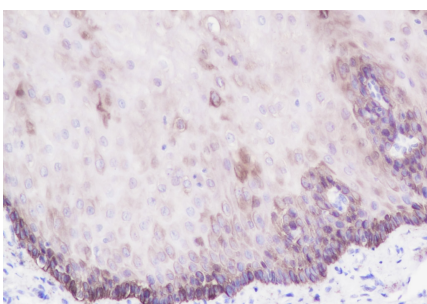
Blocking buffer: 5% NFDM/TBST Primary ab dilution: 1:1000 Primary ab incubation condition: 2 hours at room temperature Secondary ab: Goat Anti-Rabbit IgG H&L (HRP) Lysate: 1: A431, 2: Mouse skin, 3: Rat skin Protein loading quantity: 20 µg Exposure time: 10 s Predicted MW: 45 kDa Observed MW: 45 kDa



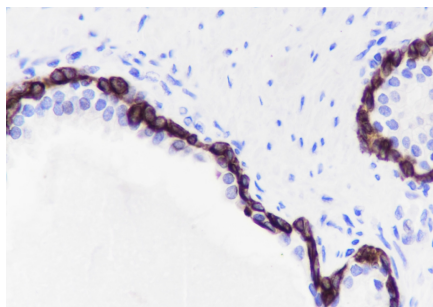
Cell line: A431 Fixative: 100% Ice-cold methanol Permeabilization: 0.1% TritonX-100 Primary ab dilution: 1:50 Primary incubation condition: 4°C overnight Secondary ab: Goat Anti-Rabbit IgG Nuclear counter stain: DAPI (Blue) Comment: Color green is the positive signal for AP94539



Cell line: A431 Fixative: 4% Paraformaldehyde Permeabilization: 0.1% TritonX-100 Primary ab dilution: 1:100 Secondary ab: Goat anti Rabbit IgG Unlabelled control: The cell without incubation with primary antibody and secondary antibody (Black line). Isotype control: Rabbit monoclonal IgG (Blue line). Comment: Line red is the positive signal for PTM-5986



Tissue: Human esophagus Section type: Formalin fixed & Paraffin -embedded section Retrieval method: High temperature and high pressure Retrieval buffer: Tris/EDTA buffer, pH 9.0 Primary ab dilution: 1:1000 Primary ab incubation condition: 1 hour at room temperature Secondary ab: SP Kit(Rabbit) (sp-0023) Counter stain: Hematoxylin (Blue) Comment: Color brown is the positive signal for AP94539



Tissue: Human prostatic hyperplasia Section type:  
Formalin fixed & Paraffin -embedded section Retrieval  
method: High temperature and high pressure Retrieval  
buffer: Tris/EDTA buffer, pH 9.0 Primary ab dilution:  
1:1000 Primary ab incubation condition: 1 hour at room  
temperature Secondary ab: SP Kit(Rabbit) (sp-0023)  
Counter stain: Hematoxylin (Blue) Comment: Color brown  
is the positive signal for AP94539

Please note: All products are 'FOR RESEARCH USE ONLY. NOT FOR USE IN DIAGNOSTIC OR THERAPEUTIC PROCEDURES'.