

EP4 Rabbit pAb

EP4 Rabbit pAb
Catalog # AP94536

Product Information

Application	WB
Primary Accession	P32240
Reactivity	Mouse
Host	Rabbit
Clonality	Polyclonal
Calculated MW	56158
Physical State	Liquid
Immunogen	KLH conjugated synthetic peptide derived from mouse EP4
Epitope Specificity	1-100/513
Isotype	IgG
Purity	affinity purified by Protein A
Buffer	0.01M TBS (pH7.4) with 1% BSA, 0.02% Proclin300 and 50% Glycerol.
SUBCELLULAR LOCATION	Cell membrane.
SIMILARITY	Belongs to the G-protein coupled receptor 1 family.
SUBUNIT	Interacts with FEM1A.
Post-translational modifications	Phosphorylation mediates agonist-mediated desensitization by promoting cytoplasmic retention.
Important Note	This product as supplied is intended for research use only, not for use in human, therapeutic or diagnostic applications.
Background Descriptions	Receptor for prostaglandin E2 (PGE2). The activity of this receptor is mediated by G(s) proteins that stimulate adenylate cyclase. Has a relaxing effect on smooth muscle. May play an important role in regulating renal hemodynamics, intestinal epithelial transport, adrenal aldosterone secretion, and uterine function.

Additional Information

Gene ID	19219
Other Names	Prostaglandin E2 receptor EP4 subtype, PGE receptor EP4 subtype, PGE2 receptor EP4 subtype, Prostanoid EP4 receptor, Ptger4, Ptgerep4
Target/Specificity	High in intestine and in peripheral blood mononuclear cells; low in lung, kidney, thymus, uterus, vasculature and brain. Not found in liver, heart, retina or skeletal muscle.
Dilution	WB=1:500-2000,Flow-Cyt=2ug/Test
Format	0.01M TBS(pH7.4) with 1% BSA, 0.09% (W/V) sodium azide and 50% Glyce
Storage	Store at -20 °C for one year. Avoid repeated freeze/thaw cycles. When

reconstituted in sterile pH 7.4 0.01M PBS or diluent of antibody the antibody is stable for at least two weeks at 2-4 °C.

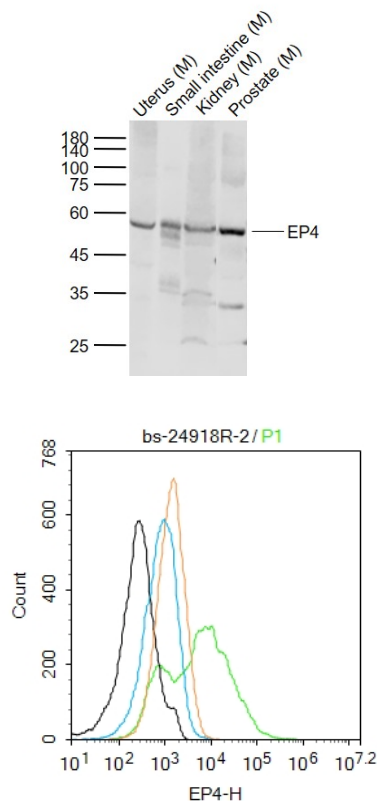
Protein Information

Name	Ptger4
Synonyms	Ptgerep4
Function	Receptor for prostaglandin E2 (PGE2). The activity of this receptor is mediated by G(s) proteins that stimulate adenylate cyclase. Has a relaxing effect on smooth muscle. May play an important role in regulating renal hemodynamics, intestinal epithelial transport, adrenal aldosterone secretion, and uterine function.
Cellular Location	Cell membrane; Multi-pass membrane protein.
Tissue Location	Abundant expression in ileum, thymus and mastocytoma P-815 cells. Also observed in lung, spleen, heart and uterus

Background

This product as supplied is intended for research use only, not for use in human, therapeutic or diagnostic applications.

Images



Sample: Lane 1: Mouse Uterus tissue lysates Lane 2: Mouse Small intestine tissue lysates Lane 3: Mouse Kidney tissue lysates Lane 4: Mouse Prostate tissue lysates Primary: Anti-EP4 (AP94536) at 1/1000 dilution Secondary: IRDye800CW Goat Anti-Rabbit IgG at 1/20000 dilution Predicted band size: 53 kD Observed band size: 55 kD

Blank control: CtlI-2. Primary Antibody (green line): Rabbit Anti-EP4 antibody (AP94536) Dilution: 2ug/Test; Secondary Antibody : Goat anti-rabbit IgG-FITC Dilution: 0.5ug/Test. Protocol The cells were incubated in 5%BSA to block non-specific protein-protein interactions for 30 min at room temperature .Cells stained with Primary Antibody for 30 min at room temperature. The secondary antibody used for 40 min at room temperature. Acquisition of 20,000 events was performed.