

Bcl2A1 Rabbit pAb

Bcl2A1 Rabbit pAb
Catalog # AP94532

Product Information

Application	WB, IHC-P, IHC-F, IF
Primary Accession	Q07440
Reactivity	Mouse
Host	Rabbit
Clonality	Polyclonal
Calculated MW	19914
Physical State	Liquid
Immunogen	KLH conjugated synthetic peptide derived from mouse Bcl2A1
Epitope Specificity	11-80/172
Isotype	IgG
Purity	affinity purified by Protein A
Buffer	Preservative: 0.02% Proclin300, Constituents: 1% BSA, 0.01M PBS, pH7.4.
SUBCELLULAR LOCATION	Cytoplasm.
SIMILARITY	Belongs to the Bcl-2 family.
SUBUNIT	Interacts directly with BAK1, BID, BMF and BBC3. Interacts directly with BCL2L11/BIM. Interacts with BAX isoform Sigma.
Important Note	This product as supplied is intended for research use only, not for use in human, therapeutic or diagnostic applications.
Background Descriptions	This gene encodes a member of the BCL-2 protein family. The proteins of this family form hetero- or homodimers and act as anti- and pro-apoptotic regulators that are involved in a wide variety of cellular activities such as embryonic development, homeostasis and tumorigenesis. The protein encoded by this gene is able to reduce the release of pro-apoptotic cytochrome c from mitochondria and block caspase activation. This gene is a direct transcription target of NF-kappa B in response to inflammatory mediators, and is up-regulated by different extracellular signals, such as granulocyte-macrophage colony-stimulating factor (GM-CSF), CD40, phorbol ester and inflammatory cytokine TNF and IL-1, which suggests a cytoprotective function that is essential for lymphocyte activation as well as cell survival. Alternatively spliced transcript variants encoding different isoforms have been found for this gene. [provided by RefSeq, Jul 2008]

Additional Information

Gene ID	12044
Other Names	Bcl-2-related protein A1, A1-A, Hemopoietic-specific early response protein, Protein BFL-1, Bcl2a1, A1, Bcl2a1a, Bfl1
Target/Specificity	Seems to be restricted to the hematopoietic compartment. Expressed in peripheral blood, spleen, and bone marrow, at moderate levels in lung, small

intestine and testis, at a minimal levels in other tissues. Also found in vascular smooth muscle cells and hematopoietic malignancies.

Dilution	WB=1:500-2000,IHC-P=1:100-500,IHC-F=1:100-500,IF=1:100-500
Format	0.01M TBS(pH7.4) with 1% BSA, 0.09% (W/V) sodium azide and 50% Glyce
Storage	Store at -20 °C for one year. Avoid repeated freeze/thaw cycles. When reconstituted in sterile pH 7.4 0.01M PBS or diluent of antibody the antibody is stable for at least two weeks at 2-4 °C.

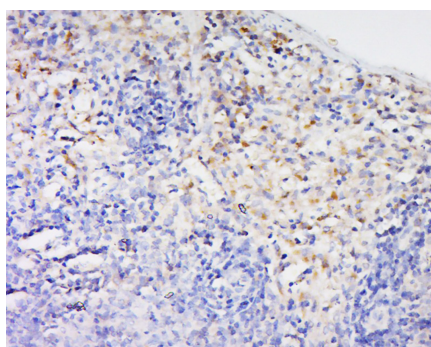
Protein Information

Name	Bcl2a1
Synonyms	A1, Bcl2a1a, Bfl1
Function	Retards apoptosis induced by IL-3 deprivation. May function in the response of hemopoietic cells to external signals and in maintaining endothelial survival during infection. Can inhibit apoptosis induced by serum starvation in the mammary epithelial cell line HC11 (PubMed: 11888890).
Cellular Location	Cytoplasm {ECO:0000250 UniProtKB:Q16548}.
Tissue Location	Expressed in hemopoietic tissues, including bone marrow, spleen and thymus

Background

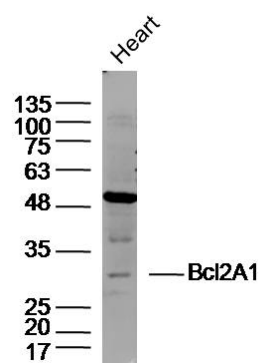
This product as supplied is intended for research use only, not for use in human, therapeutic or diagnostic applications.

Images



Tissue/cell: rat spleen tissue; 4% Paraformaldehyde-fixed and paraffin-embedded; Antigen retrieval: citrate buffer (0.01M, pH 6.0), Boiling bathing for 15min; Block endogenous peroxidase by 3% Hydrogen peroxide for 30min; Blocking buffer (normal goat serum,C-0005) at 37°C for 20 min; Incubation: Anti-Bcl2A1 Polyclonal Antibody, Unconjugated(AP94532) 1:500, overnight at 4°C, followed by conjugation to the secondary antibody(SP-0023) and DAB(C-0010) staining

Sample: Heart (Mouse) Lysate at 40 ug Primary: Anti-Bcl2A1 (AP94532) at 1/300 dilution Secondary: IRDye800CW Goat Anti-Rabbit IgG at 1/20000 dilution Predicted band size: 29kD Observed band size: 29kD



Please note: All products are 'FOR RESEARCH USE ONLY. NOT FOR USE IN DIAGNOSTIC OR THERAPEUTIC PROCEDURES'.