

SLC35D2 Rabbit pAb

SLC35D2 Rabbit pAb

Catalog # AP94531

Product Information

Application	WB, IHC-P, IHC-F, IF
Reactivity	Mouse
Host	Rabbit
Clonality	Polyclonal
Calculated MW	37 KDa
Physical State	Liquid
Immunogen	KLH conjugated synthetic peptide derived from mouse SLC35D2
Epitope Specificity	251-326/326
Isotype	IgG
Purity	affinity purified by Protein A
Buffer	Preservative: 0.02% Proclin300, Constituents: 1% BSA, 0.01M PBS, pH7.4.
SUBCELLULAR LOCATION	Golgi apparatus membrane.
SIMILARITY	Belongs to the TPT transporter family. SLC35D subfamily.
Important Note	This product as supplied is intended for research use only, not for use in human, therapeutic or diagnostic applications.
Background Descriptions	Nucleotide sugars, which are synthesized in the cytosol or the nucleus, are high-energy donor substrates for glycosyltransferases located in the lumen of the endoplasmic reticulum and Golgi apparatus. Translocation of nucleotide sugars from the cytosol into the lumen compartment is mediated by specific nucleotide sugar transporters, such as SLC35D2 (Suda et al., 2004 [PubMed 15082721]).[supplied by OMIM, Mar 2008]

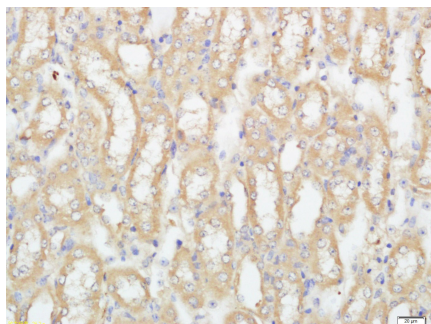
Additional Information

Target/Specificity	Highly expressed in heart, kidney, small intestine, placenta, lung and peripheral blood leukocyte. Weakly expressed in skeletal muscle and spleen. Not expressed in brain, colon and thymus.
Dilution	WB=1:500-2000,IHC-P=1:100-500,IHC-F=1:100-500,IF=1:100-500
Format	0.01M TBS(pH7.4) with 1% BSA, 0.09% (W/V) sodium azide and 50% Glyce
Storage	Store at -20 °C for one year. Avoid repeated freeze/thaw cycles. When reconstituted in sterile pH 7.4 0.01M PBS or diluent of antibody the antibody is stable for at least two weeks at 2-4 °C.

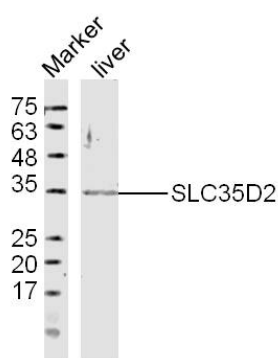
Background

This product as supplied is intended for research use only, not for use in human, therapeutic or diagnostic applications.

Images



Tissue/cell: mouse kidney tissue; 4%
Paraformaldehyde-fixed and paraffin-embedded; Antigen retrieval: citrate buffer (0.01M, pH 6.0), Boiling bathing for 15min; Block endogenous peroxidase by 3% Hydrogen peroxide for 30min; Blocking buffer (normal goat serum,C-0005) at 37°C for 20 min; Incubation: Anti-SLC35D2 Polyclonal Antibody, Unconjugated(AP94531) 1:500, overnight at 4°C, followed by conjugation to the secondary antibody(SP-0023) and DAB(C-0010) staining



Sample: liver(Mouse)Lysate at 40 ug Primary: Anti-SLC35D2(AP94531)at 1/300 dilution Secondary: IRDye800CW Goat Anti-RabbitIgG at 1/20000 dilution
Predicted band size: 37kD Observed band size: 35kD

Please note: All products are 'FOR RESEARCH USE ONLY. NOT FOR USE IN DIAGNOSTIC OR THERAPEUTIC PROCEDURES'.