

PKC Gamma Recombinant Mouse mAb

PKC Gamma Recombinant Mouse mAb

Catalog # AP94524

Product Information

Application	WB, IHC-P, IHC-F, IF, ICC
Host	Rabbit
Clonality	Recombinant

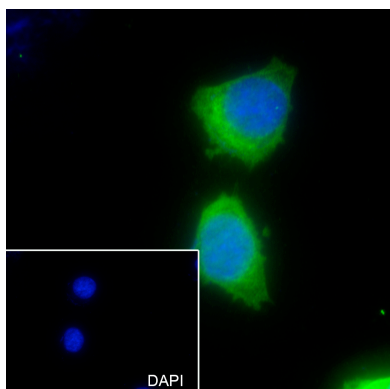
Additional Information

Dilution	WB=1:200-1:1000,IHC-P=1:20-100,IHC-F=1:20-100,ICC/IF=1:20-100,IF=1:20-100
Format	0.01M TBS(pH7.4) with 1% BSA, 0.09% (W/V) sodium azide and 50% Glyce
Storage	Store at -20 °C for one year. Avoid repeated freeze/thaw cycles. When reconstituted in sterile pH 7.4 0.01M PBS or diluent of antibody the antibody is stable for at least two weeks at 2-4 °C.

Background

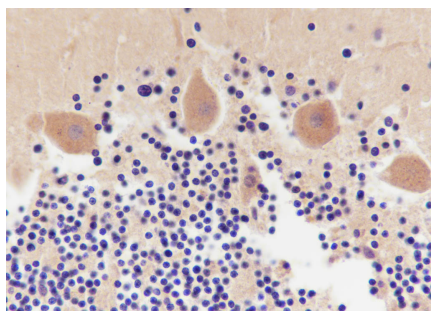
This product as supplied is intended for research use only, not for use in human, therapeutic or diagnostic applications.

Images

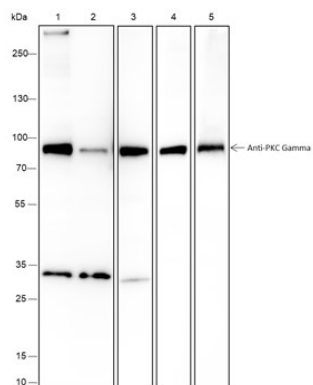


Cell line: SH-SY5Y Fixative: 100% Ice-cold methanol
Permeabilization: 0.1% TritonX-100 Primary ab dilution:
1:50 Primary incubation condition: 4°C overnight Nuclear
counter stain: DAPI (Blue) Comment: Color green is the
positive signal for AP94524

Tissue: Human cerebellum Section type: Formalin fixed &
Paraffin -embedded section Retrieval method: High
temperature and high pressure Retrieval buffer:
Tris/EDTA buffer, pH 9.0 Primary ab dilution: 1:100
Primary ab incubation condition: 1 hour at room
temperature Counter stain: Hematoxylin Comment: Color



brown is the positive signal for AP94524



Blocking buffer: 5% NFDM/TBST Primary ab dilution:
1:1000 Primary ab incubation condition:4°Covernight
Lysate:: 1: HeLa, 2: HEK-293, 3: PC-12, 4: Mouse brain, 5:
Rat brain Protein loading quantity: 20 µg Exposure time:
60 s Predicted MW: 78 kDa Observed MW: 90 kDa

Please note: All products are 'FOR RESEARCH USE ONLY. NOT FOR USE IN DIAGNOSTIC OR THERAPEUTIC PROCEDURES'.