

SARS S-protein Rabbit pAb

SARS S-protein Rabbit pAb

Catalog # AP94510

Product Information

Application	WB
Host	Rabbit
Clonality	Polyclonal
Calculated MW	139 KDa
Physical State	Liquid
Immunogen	KLH conjugated synthetic peptide derived from SARS S-protein
Epitope Specificity	401-500/1255
Isotype	IgG
Purity	affinity purified by Protein A
Buffer	0.01M TBS (pH7.4) with 1% BSA, 0.02% Proclin300 and 50% Glycerol.
Important Note	This product as supplied is intended for research use only, not for use in human, therapeutic or diagnostic applications.

Additional Information

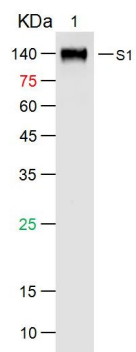
Dilution	WB=1:500-2000
Format	0.01M TBS(pH7.4) with 1% BSA, 0.09% (W/V) sodium azide and 50% Glyce
Storage	Store at -20 °C for one year. Avoid repeated freeze/thaw cycles. When reconstituted in sterile pH 7.4 0.01M PBS or diluent of antibody the antibody is stable for at least two weeks at 2-4 °C.

Background

This product as supplied is intended for research use only, not for use in human, therapeutic or diagnostic applications.

Images

Sample: Lane 1: SARS-CoV Spike S1 Protein at 500ng
Primary: Rabbit Anti-SARS S Protein Antibody at 1/1000
dilution Secondary: IRDye800CW Goat Anti-Rabbit IgG at
1/20000 dilution Predicted band size: 76.6kD Observed
band size: kD



Please note: All products are 'FOR RESEARCH USE ONLY. NOT FOR USE IN DIAGNOSTIC OR THERAPEUTIC PROCEDURES'.